

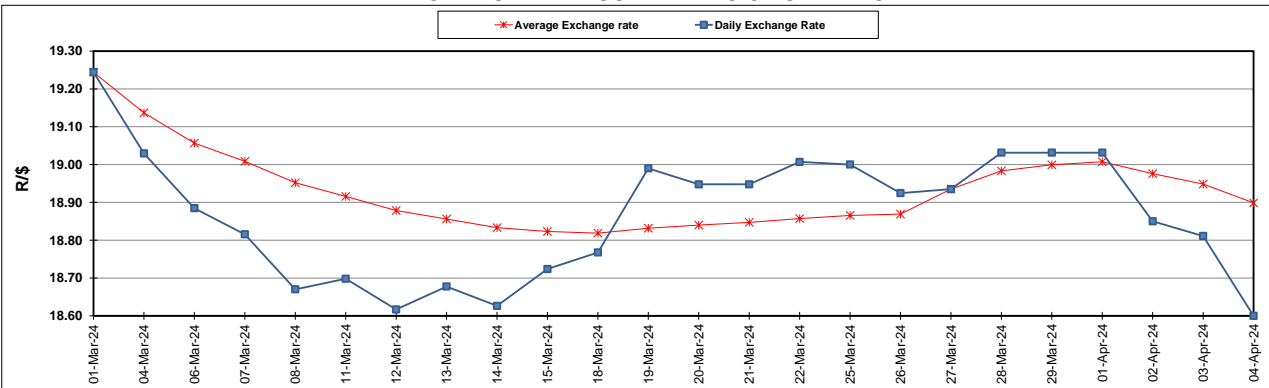
South African Cents per Litre (SA c/l)	PETROL 95 ULP	PETROL 93 ULP & LRP	DIESEL 0.05%	DIESEL 0.005%	ILL. PAR.
GAUTENG PUMP PRICE AS FROM 03/04/2024	2,512.000	2,478.000	-	-	-
WHOLESALE PRICE AS FROM 03/04/2024	-	-	2,245.090	2,259.490	1,618.938
SINGLE NATIONAL MAXIMUM RETAIL PRICE AS FROM 03/04/2024	-	-	-	-	2,079.000
BASIC FUEL PRICE - 04/04/2024	1,383.084	1,348.946	1,373.890	1,387.358	1,365.512
PRESS RELEASE CONTRIBUTION TO BFP 03/04/2024 - 04/04/2024	1,379.650	1,345.650	1,389.630	1,404.030	1,365.128
UNIT OVER/(UNDER) RECOVERY - 04/04/2024	(3.434)	(3.296)	15.740	16.672	(0.384)
AVERAGE BASIC FUEL PRICE 27/03/2024 - 04/04/2024	1,398.808	1,364.412	1,364.091	1,378.710	1,349.980
AVERAGE UNIT OVER/(UNDER) RECOVERY 27/03/2024 - 04/04/2024	(45.429)	(43.605)	46.253	49.606	40.862

ANALYSIS MOVEMENT OF AVERAGE OVER/(UNDER) RECOVERY

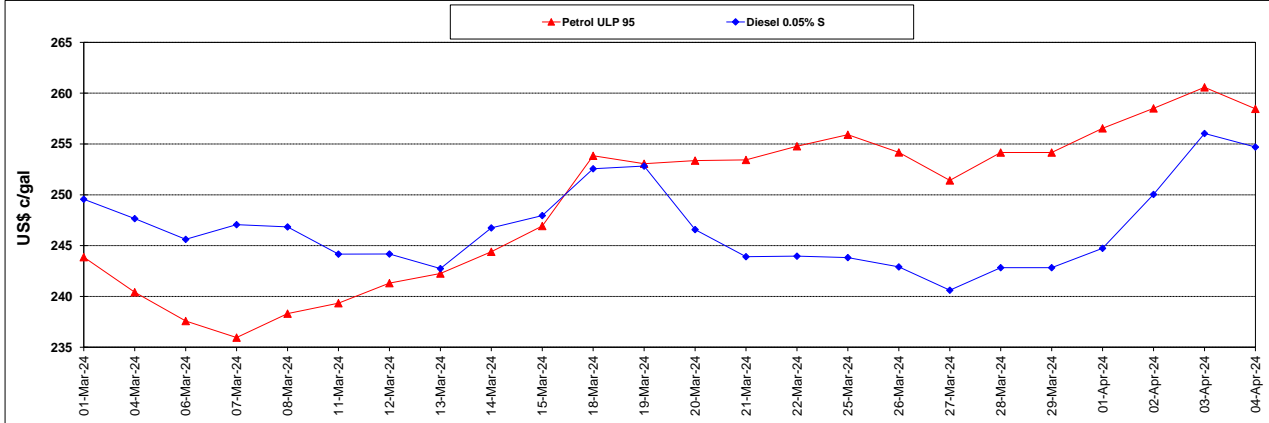
	PETROL 95	PETROL 93	DIESEL 0.05%	DIESEL 0.005%	ILL. PAR.
- MOVEMENT IN INTERNATIONAL PRODUCT PRICES	(43.231)	(41.461)	48.397	51.773	42.984
- MOVEMENT IN EXCHANGE RATE	(2.198)	(2.144)	(2.144)	(2.167)	(2.122)
AVERAGE UNIT OVER/(UNDER) RECOVERY 27/03/2024 - 04/04/2024	(45.429)	(43.605)	46.253	49.606	40.862

R/\$ EXCHANGE RATE - (R/\$18.6000 - 04/04/2024)

EXCHANGE RATE USED IN BASIC FUEL PRICE



INTERNATIONAL PRODUCT PRICES OF BASKET USED IN BASIC FUEL PRICE



BASIC FUEL PRICE IN SA CENTS PER LITRE

