

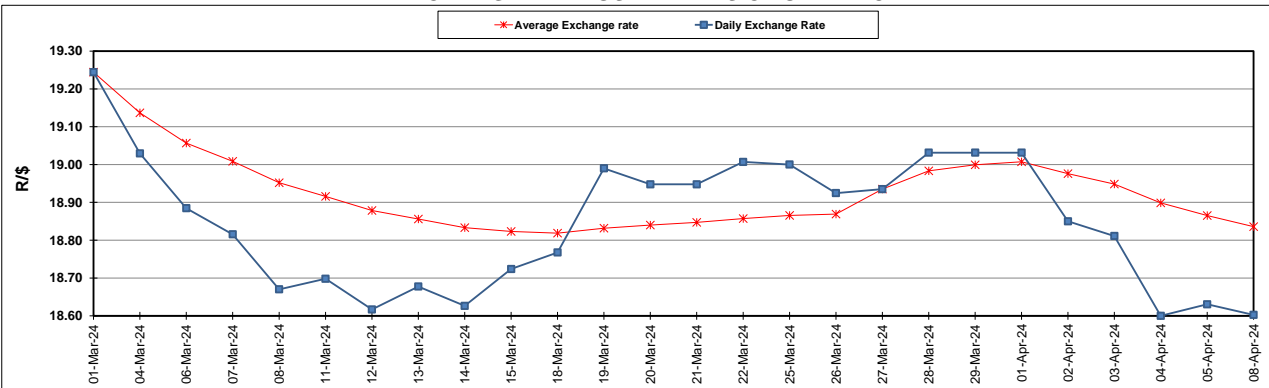
South African Cents per Litre (SA c/l)	PETROL 95 ULP	PETROL 93 ULP & LRP	DIESEL 0.05%	DIESEL 0.005%	ILL. PAR.
GAUTENG PUMP PRICE AS FROM 03/04/2024	2,512.000	2,478.000	-	-	-
WHOLESALE PRICE AS FROM 03/04/2024	-	-	2,245.090	2,259.490	1,618.938
SINGLE NATIONAL MAXIMUM RETAIL PRICE AS FROM 03/04/2024	-	-	-	-	2,079.000
BASIC FUEL PRICE - 08/04/2024	1,382.196	1,348.072	1,386.471	1,396.158	1,372.465
PRESS RELEASE CONTRIBUTION TO BFP 03/04/2024 - 08/04/2024	1,379.650	1,345.650	1,389.630	1,404.030	1,365.128
UNIT OVER/(UNDER) RECOVERY - 08/04/2024	(2.546)	(2.422)	3.159	7.872	(7.337)
AVERAGE BASIC FUEL PRICE 27/03/2024 - 08/04/2024	1,397.314	1,362.970	1,371.003	1,384.661	1,357.180
AVERAGE UNIT OVER/(UNDER) RECOVERY 27/03/2024 - 08/04/2024	(38.097)	(36.642)	34.738	38.258	27.948

ANALYSIS MOVEMENT OF AVERAGE OVER/(UNDER) RECOVERY

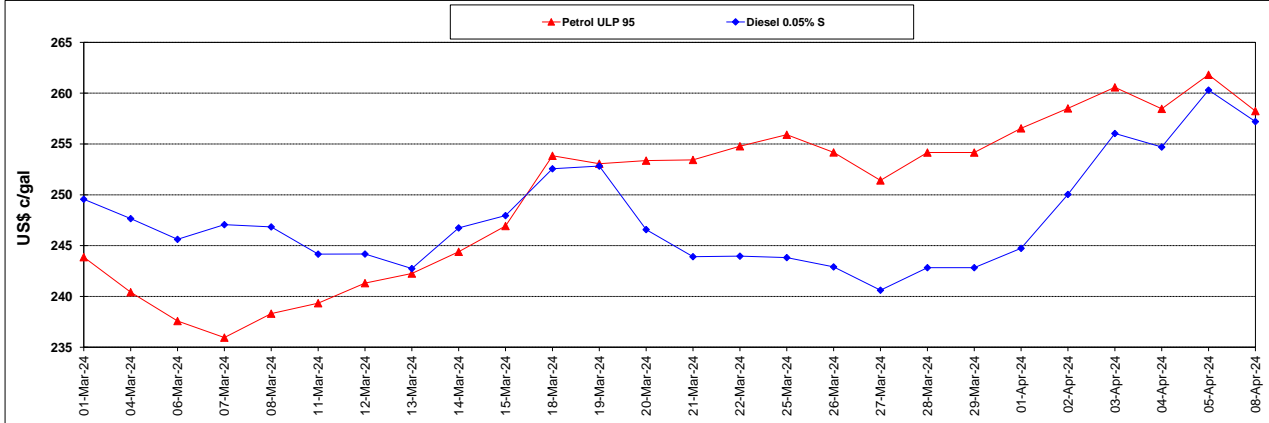
	PETROL 95	PETROL 93	DIESEL 0.05%	DIESEL 0.005%	ILL. PAR.
- MOVEMENT IN INTERNATIONAL PRODUCT PRICES	(40.545)	(39.030)	32.336	35.832	25.570
- MOVEMENT IN EXCHANGE RATE	2.448	2.388	2.402	2.426	2.378
AVERAGE UNIT OVER/(UNDER) RECOVERY 27/03/2024 - 08/04/2024	(38.097)	(36.642)	34.738	38.258	27.948

R/\$ EXCHANGE RATE - (R/\$18.6025 - 08/04/2024)

EXCHANGE RATE USED IN BASIC FUEL PRICE



INTERNATIONAL PRODUCT PRICES OF BASKET USED IN BASIC FUEL PRICE



BASIC FUEL PRICE IN SA CENTS PER LITRE

