

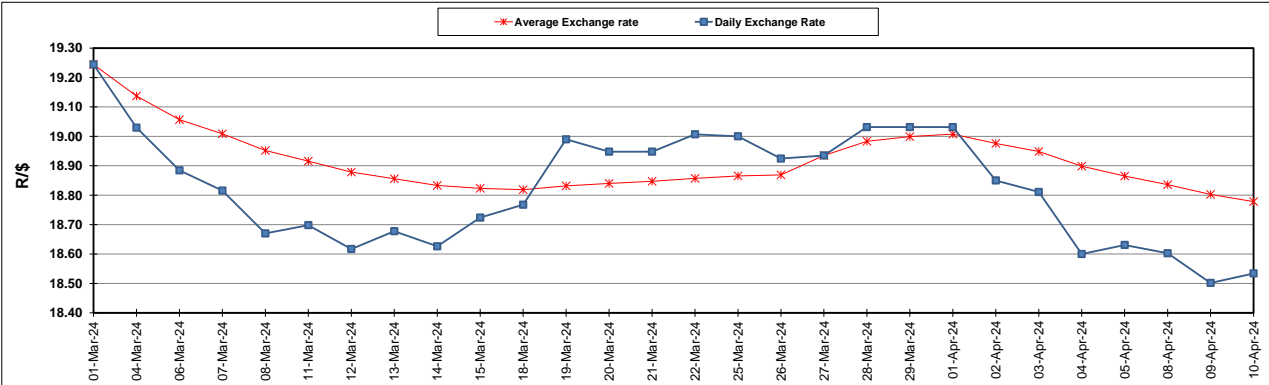
South African Cents per Litre (SA c/l)	PETROL 95 ULP	PETROL 93 ULP & LRP	DIESEL 0.05%	DIESEL 0.005%	ILL. PAR.
GAUTENG PUMP PRICE AS FROM 03/04/2024	2,512.000	2,478.000	-	-	-
WHOLESALE PRICE AS FROM 03/04/2024	-	-	2,245.090	2,259.490	1,618.938
SINGLE NATIONAL MAXIMUM RETAIL PRICE AS FROM 03/04/2024	-	-	-	-	2,079.000
BASIC FUEL PRICE - 10/04/2024	1,376.493	1,341.633	1,372.487	1,379.458	1,358.309
PRESS RELEASE CONTRIBUTION TO BFP 03/04/2024 - 10/04/2024	1,379.650	1,345.650	1,389.630	1,404.030	1,365.128
UNIT OVER/(UNDER) RECOVERY - 10/04/2024	3.157	4.017	17.143	24.572	6.819
AVERAGE BASIC FUEL PRICE 27/03/2024 - 10/04/2024	1,393.279	1,358.848	1,371.479	1,384.141	1,357.172
AVERAGE UNIT OVER/(UNDER) RECOVERY 27/03/2024 - 10/04/2024	(30.347)	(29.007)	31.333	35.344	24.320

ANALYSIS MOVEMENT OF AVERAGE OVER/(UNDER) RECOVERY

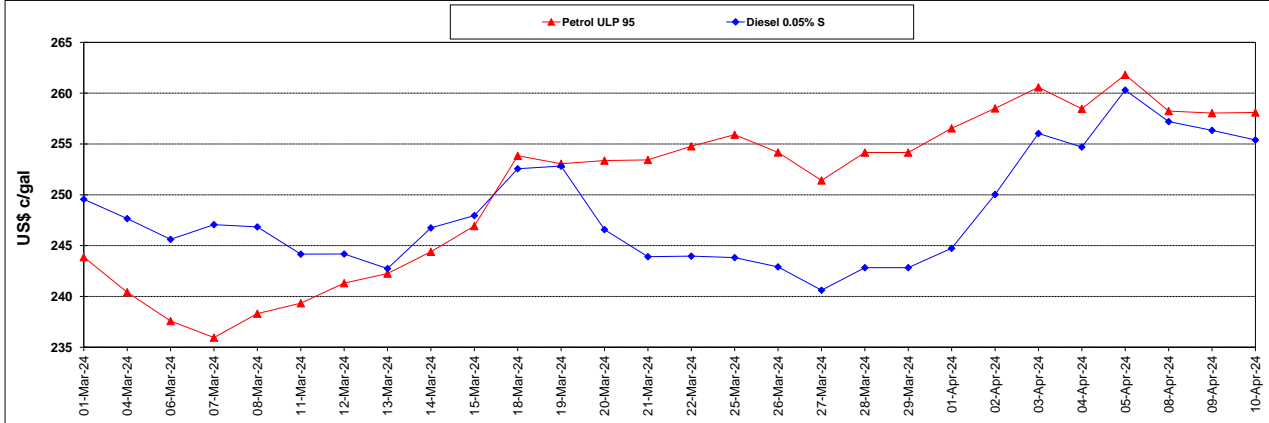
	PETROL 95	PETROL 93	DIESEL 0.05%	DIESEL 0.005%	ILL. PAR.
- MOVEMENT IN INTERNATIONAL PRODUCT PRICES	(37.084)	(35.578)	24.701	28.651	17.758
- MOVEMENT IN EXCHANGE RATE	6.737	6.571	6.632	6.693	6.562
AVERAGE UNIT OVER/(UNDER) RECOVERY 27/03/2024 - 10/04/2024	(30.347)	(29.007)	31.333	35.344	24.320

R/\$ EXCHANGE RATE - (R/\$18.5338 - 10/04/2024)

EXCHANGE RATE USED IN BASIC FUEL PRICE



INTERNATIONAL PRODUCT PRICES OF BASKET USED IN BASIC FUEL PRICE



BASIC FUEL PRICE IN SA CENTS PER LITRE

