

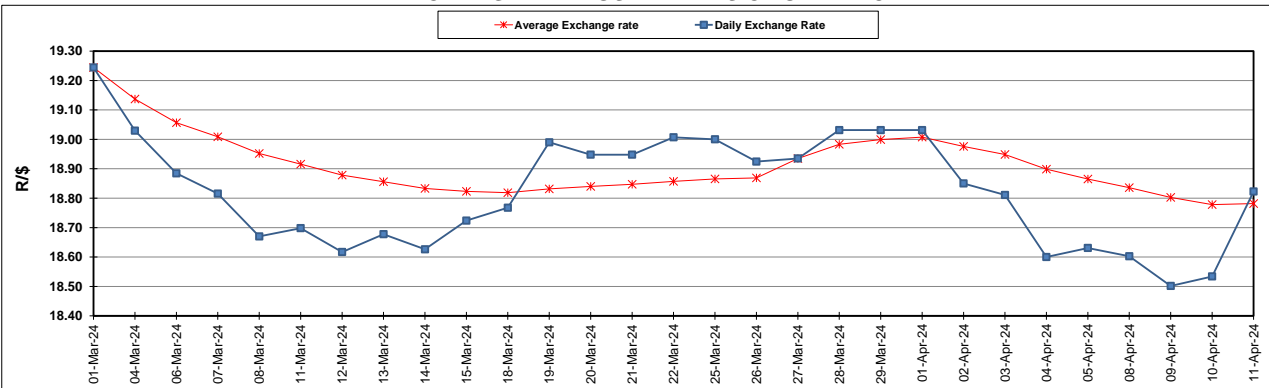
South African Cents per Litre (SA c/l)	PETROL 95 ULP	PETROL 93 ULP & LRP	DIESEL 0.05%	DIESEL 0.005%	ILL. PAR.
GAUTENG PUMP PRICE AS FROM 03/04/2024	2,512.000	2,478.000	-	-	-
WHOLESALE PRICE AS FROM 03/04/2024	-	-	2,245.090	2,259.490	1,618.938
SINGLE NATIONAL MAXIMUM RETAIL PRICE AS FROM 03/04/2024	-	-	-	-	2,079.000
BASIC FUEL PRICE - 11/04/2024	1,404.571	1,369.549	1,389.159	1,395.553	1,371.323
PRESS RELEASE CONTRIBUTION TO BFP 03/04/2024 - 11/04/2024	1,379.650	1,345.650	1,389.630	1,404.030	1,365.128
UNIT OVER/(UNDER) RECOVERY - 11/04/2024	(24.921)	(23.899)	0.471	8.477	(6.195)
AVERAGE BASIC FUEL PRICE 27/03/2024 - 11/04/2024	1,394.220	1,359.740	1,372.952	1,385.092	1,358.351
AVERAGE UNIT OVER/(UNDER) RECOVERY 27/03/2024 - 11/04/2024	(29.895)	(28.582)	28.761	33.105	21.777

### ANALYSIS MOVEMENT OF AVERAGE OVER/(UNDER) RECOVERY

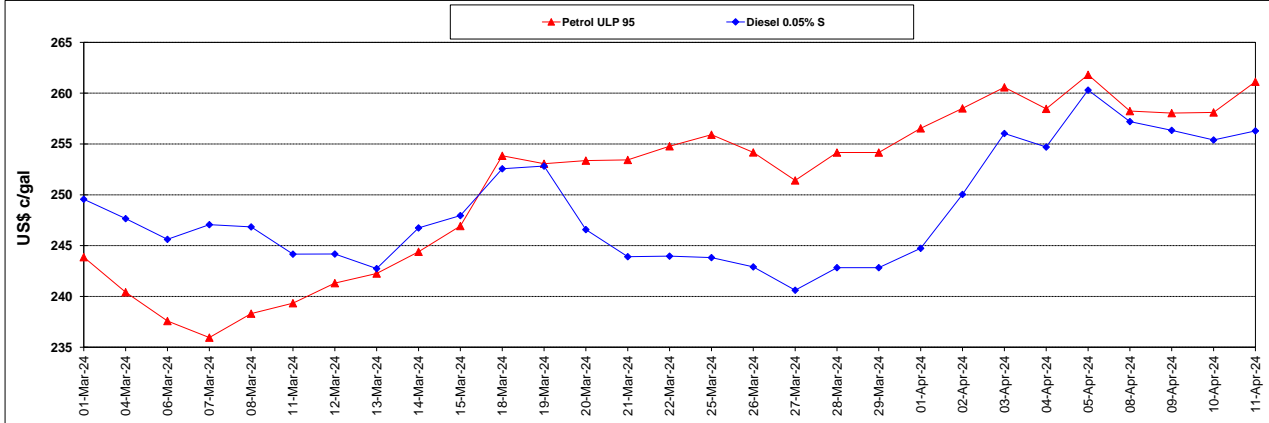
	PETROL 95	PETROL 93	DIESEL 0.05%	DIESEL 0.005%	ILL. PAR.
- MOVEMENT IN INTERNATIONAL PRODUCT PRICES	(36.361)	(34.888)	22.394	26.682	15.478
- MOVEMENT IN EXCHANGE RATE	6.466	6.306	6.367	6.423	6.299
AVERAGE UNIT OVER/(UNDER) RECOVERY 27/03/2024 - 11/04/2024	(29.895)	(28.582)	28.761	33.105	21.777

R/\$ EXCHANGE RATE - (R/\$18.8225 - 11/04/2024)

### EXCHANGE RATE USED IN BASIC FUEL PRICE



### INTERNATIONAL PRODUCT PRICES OF BASKET USED IN BASIC FUEL PRICE



### BASIC FUEL PRICE IN SA CENTS PER LITRE

