

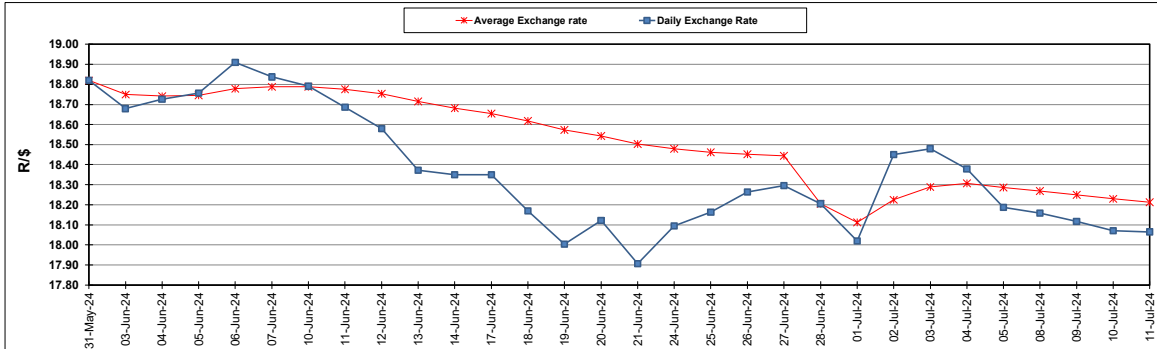
South African Cents per Litre (SA c/l)	PETROL 95 ULP	PETROL 93 ULP & LRP	DIESEL 0.05%	DIESEL 0.005%	ILL. PAR.
GAUTENG PUMP PRICE AS FROM 04/07/2024	2,326.000	2,286.000	-	-	-
WHOLESALE PRICE AS FROM 04/07/2024	-	-	2,066.170	2,090.570	1,501.938
SINGLE NATIONAL MAXIMUM RETAIL PRICE AS FROM 04/07/2024	-	-	-	-	1,923.000
BASIC FUEL PRICE - 11/07/2024	1,213.737	1,180.052	1,208.989	1,246.912	1,230.213
PRESS RELEASE CONTRIBUTION TO BFP 04/07/2024 - 11/07/2024	1,215.570	1,175.570	1,232.630	1,257.030	1,248.128
UNIT OVER/(UNDER) RECOVERY - 11/07/2024	1.833	(4.482)	23.641	10.118	17.915
AVERAGE BASIC FUEL PRICE 28/06/2024 - 11/07/2024	1,243.892	1,209.172	1,246.759	1,283.510	1,266.982
AVERAGE UNIT OVER/(UNDER) RECOVERY 28/06/2024 - 11/07/2024	9.526	6.645	(3.729)	(18.480)	(11.654)

ANALYSIS MOVEMENT OF AVERAGE OVER/(UNDER) RECOVERY

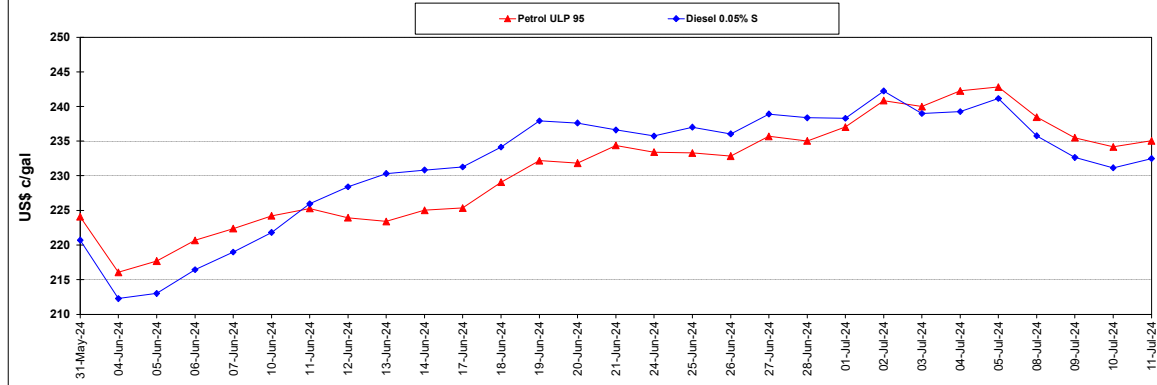
	PETROL 95	PETROL 93	DIESEL 0.05%	DIESEL 0.005%	ILL. PAR.
- MOVEMENT IN INTERNATIONAL PRODUCT PRICES	(6.230)	(8.670)	(19.521)	(34.738)	(27.702)
- MOVEMENT IN EXCHANGE RATE	15.756	15.316	15.792	16.258	16.048
AVERAGE UNIT OVER/(UNDER) RECOVERY 28/06/2024 - 11/07/2024	9.526	6.645	(3.729)	(18.480)	(11.654)

R/\$ EXCHANGE RATE - (R/\$18.0650 - 11/07/2024)

EXCHANGE RATE USED IN BASIC FUEL PRICE



INTERNATIONAL PRODUCT PRICES OF BASKET USED IN BASIC FUEL PRICE



BASIC FUEL PRICE IN SA CENTS PER LITRE

