

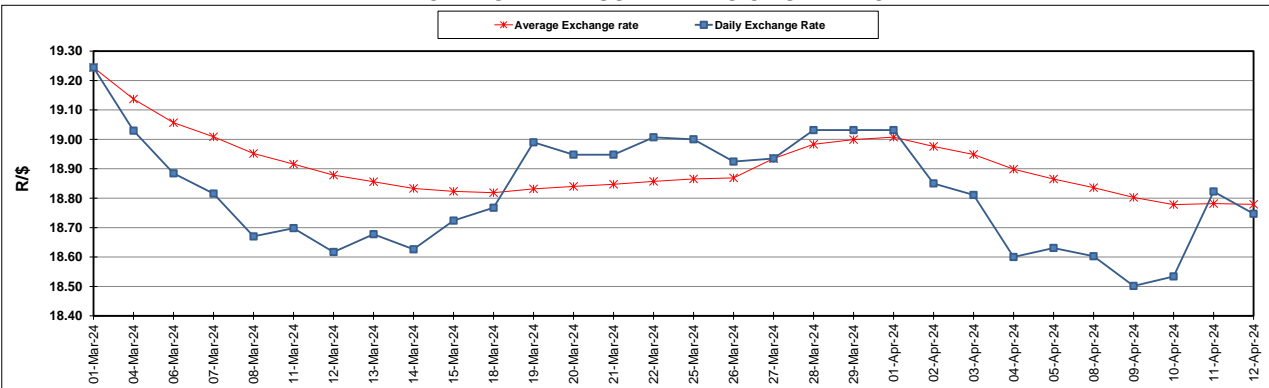
South African Cents per Litre (SA c/l)	PETROL 95 ULP	PETROL 93 ULP & LRP	DIESEL 0.05%	DIESEL 0.005%	ILL. PAR.
GAUTENG PUMP PRICE AS FROM 03/04/2024	2,512.000	2,478.000	-	-	-
WHOLESALE PRICE AS FROM 03/04/2024	-	-	2,245.090	2,259.490	1,618.938
SINGLE NATIONAL MAXIMUM RETAIL PRICE AS FROM 03/04/2024	-	-	-	-	2,079.000
BASIC FUEL PRICE - 12/04/2024	1,422.238	1,387.356	1,392.653	1,398.738	1,378.719
PRESS RELEASE CONTRIBUTION TO BFP 03/04/2024 - 12/04/2024	1,379.650	1,345.650	1,389.630	1,404.030	1,365.128
UNIT OVER/(UNDER) RECOVERY - 12/04/2024	(42.588)	(41.706)	(3.023)	5.292	(13.591)
AVERAGE BASIC FUEL PRICE 27/03/2024 - 12/04/2024	1,396.376	1,361.864	1,374.467	1,386.142	1,359.918
AVERAGE UNIT OVER/(UNDER) RECOVERY 27/03/2024 - 12/04/2024	(30.872)	(29.591)	26.317	30.965	19.056

ANALYSIS MOVEMENT OF AVERAGE OVER/(UNDER) RECOVERY

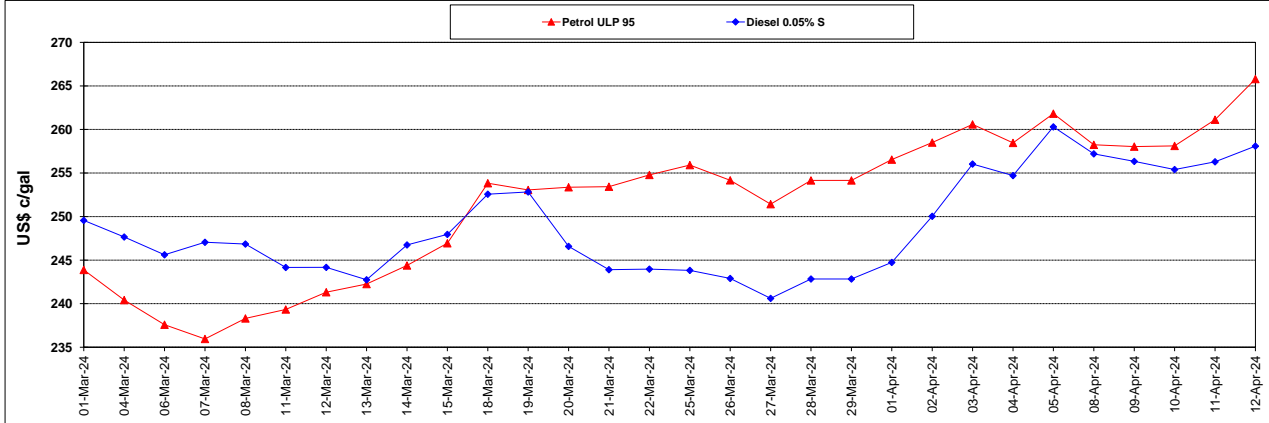
	PETROL 95	PETROL 93	DIESEL 0.05%	DIESEL 0.005%	ILL. PAR.
- MOVEMENT IN INTERNATIONAL PRODUCT PRICES	(37.549)	(36.103)	19.744	24.337	12.553
- MOVEMENT IN EXCHANGE RATE	6.677	6.512	6.573	6.628	6.503
AVERAGE UNIT OVER/(UNDER) RECOVERY 27/03/2024 - 12/04/2024	(30.872)	(29.591)	26.317	30.965	19.056

R/\$ EXCHANGE RATE - (R/\$18.7470 - 12/04/2024)

EXCHANGE RATE USED IN BASIC FUEL PRICE



INTERNATIONAL PRODUCT PRICES OF BASKET USED IN BASIC FUEL PRICE



BASIC FUEL PRICE IN SA CENTS PER LITRE

