

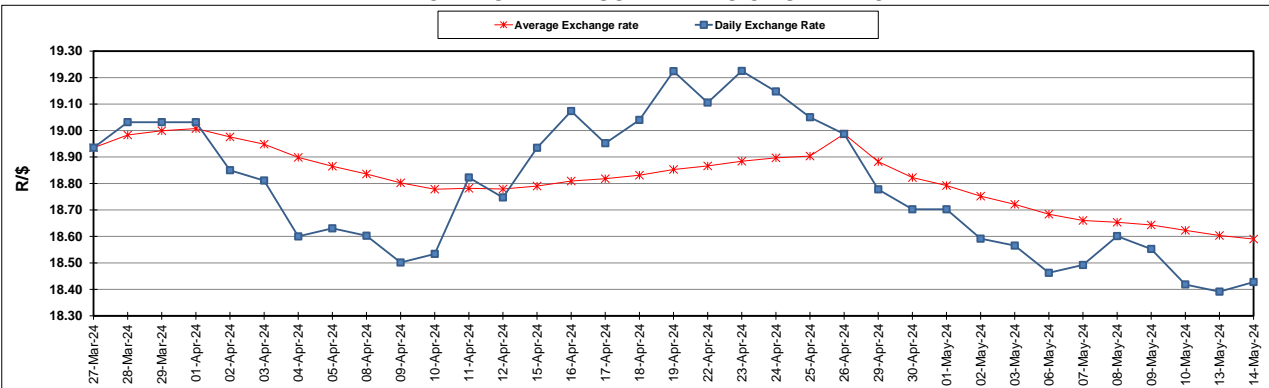
South African Cents per Litre (SA c/l)	PETROL 95 ULP	PETROL 93 ULP & LRP	DIESEL 0.05%	DIESEL 0.005%	ILL. PAR.
GAUTENG PUMP PRICE AS FROM 01/05/2024	2,549.000	2,515.000	-	-	-
WHOLESALE PRICE AS FROM 01/05/2024	-	-	2,215.090	2,223.490	1,599.938
SINGLE NATIONAL MAXIMUM RETAIL PRICE AS FROM 01/05/2024	-	-	-	-	2,054.000
BASIC FUEL PRICE - 14/05/2024	1,267.433	1,228.881	1,236.518	1,255.209	1,246.262
PRESS RELEASE CONTRIBUTION TO BFP 01/05/2024 - 14/05/2024	1,416.650	1,382.650	1,359.630	1,368.030	1,346.128
UNIT OVER/(UNDER) RECOVERY - 14/05/2024	149.217	153.769	123.112	112.821	99.866
AVERAGE BASIC FUEL PRICE 26/04/2024 - 14/05/2024	1,339.907	1,304.475	1,289.130	1,296.459	1,279.230
AVERAGE UNIT OVER/(UNDER) RECOVERY 26/04/2024 - 14/05/2024	68.205	69.637	77.423	79.879	71.283

### ANALYSIS MOVEMENT OF AVERAGE OVER/(UNDER) RECOVERY

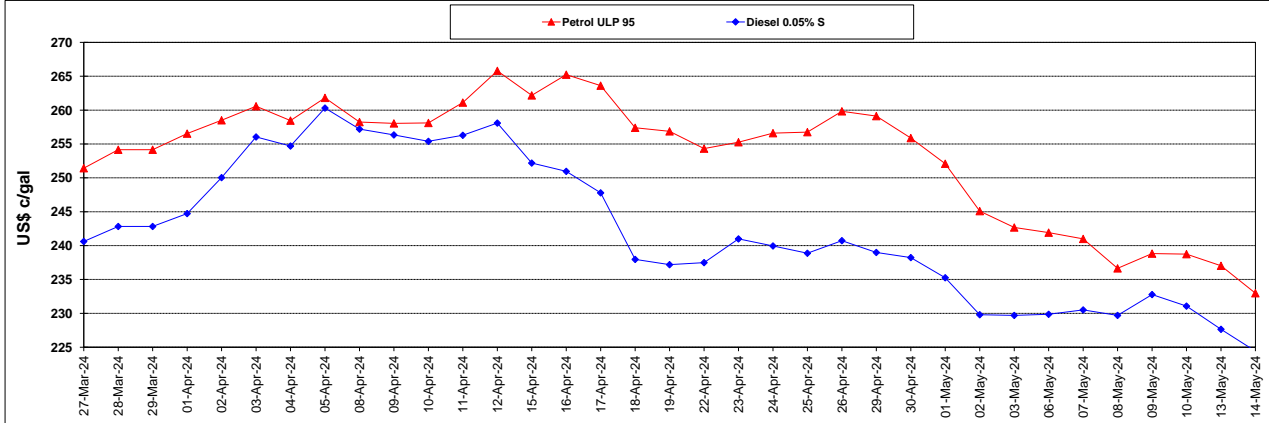
	PETROL 95	PETROL 93	DIESEL 0.05%	DIESEL 0.005%	ILL. PAR.
- MOVEMENT IN INTERNATIONAL PRODUCT PRICES	45.609	47.639	55.683	58.016	49.710
- MOVEMENT IN EXCHANGE RATE	22.596	21.998	21.740	21.863	21.573
AVERAGE UNIT OVER/(UNDER) RECOVERY 26/04/2024 - 14/05/2024	68.205	69.637	77.423	79.879	71.283

R/\$ EXCHANGE RATE - (R/\$18.4275 - 14/05/2024)

### EXCHANGE RATE USED IN BASIC FUEL PRICE



### INTERNATIONAL PRODUCT PRICES OF BASKET USED IN BASIC FUEL PRICE



### BASIC FUEL PRICE IN SA CENTS PER LITRE

