

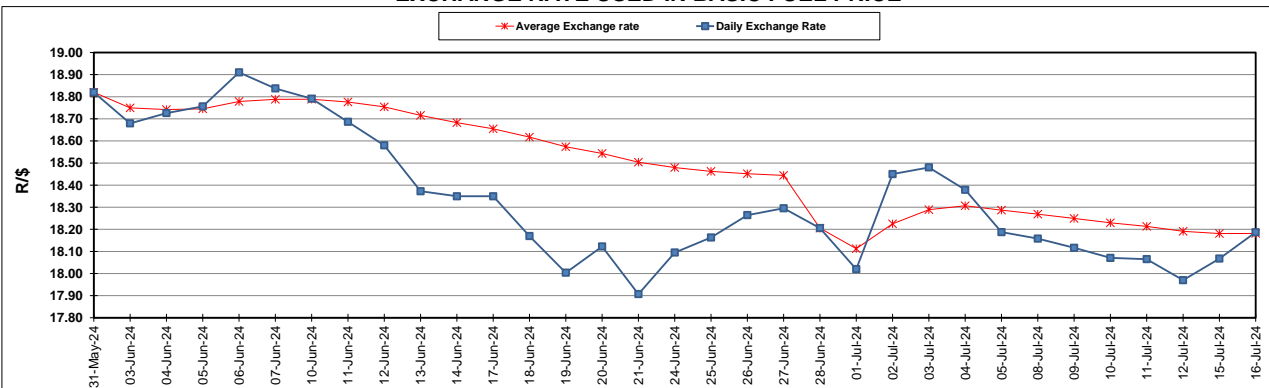
South African Cents per Litre (SA c/l)	PETROL 95 ULP	PETROL 93 ULP & LRP	DIESEL 0.05%	DIESEL 0.005%	ILL. PAR.
GAUTENG PUMP PRICE AS FROM 04/07/2024	2,326.000	2,286.000	-	-	-
WHOLESALE PRICE AS FROM 04/07/2024	-	-	2,066.170	2,090.570	1,501.938
SINGLE NATIONAL MAXIMUM RETAIL PRICE AS FROM 04/07/2024	-	-	-	-	1,923.000
BASIC FUEL PRICE - 16/07/2024	1,209.525	1,175.612	1,201.663	1,238.021	1,222.064
PRESS RELEASE CONTRIBUTION TO BFP 04/07/2024 - 16/07/2024	1,215.570	1,175.570	1,232.630	1,257.030	1,248.128
UNIT OVER/(UNDER) RECOVERY - 16/07/2024	6.045	(0.042)	30.967	19.009	26.064
AVERAGE BASIC FUEL PRICE 28/06/2024 - 16/07/2024	1,237.347	1,202.862	1,236.905	1,273.623	1,257.026
AVERAGE UNIT OVER/(UNDER) RECOVERY 28/06/2024 - 16/07/2024	7.337	3.667	3.725	(10.439)	(3.360)

ANALYSIS MOVEMENT OF AVERAGE OVER/(UNDER) RECOVERY

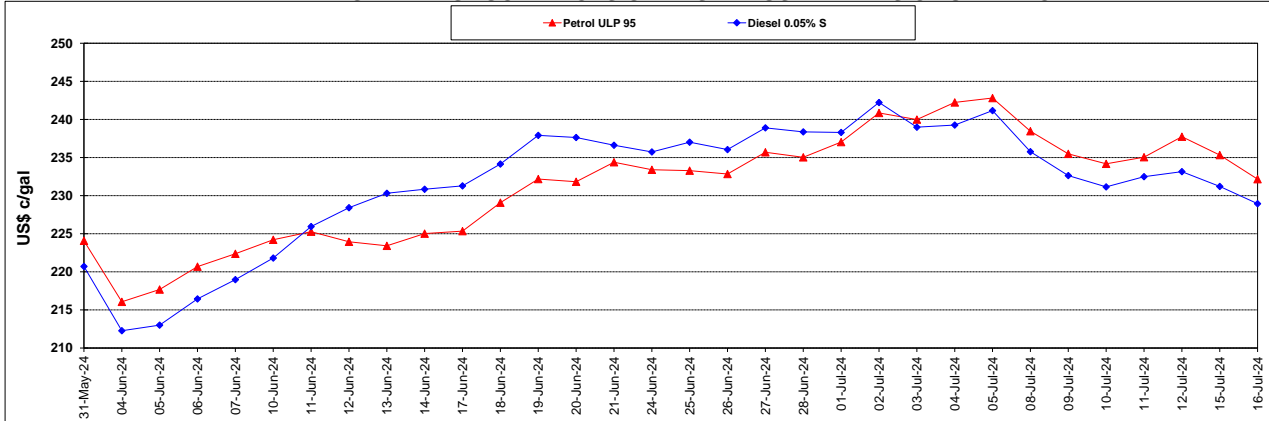
	PETROL 95	PETROL 93	DIESEL 0.05%	DIESEL 0.005%	ILL. PAR.
- MOVEMENT IN INTERNATIONAL PRODUCT PRICES	(10.535)	(13.705)	(14.140)	(28.834)	(21.516)
- MOVEMENT IN EXCHANGE RATE	17.872	17.373	17.865	18.395	18.156
AVERAGE UNIT OVER/(UNDER) RECOVERY 28/06/2024 - 16/07/2024	7.337	3.667	3.725	(10.439)	(3.360)

R/\$ EXCHANGE RATE - (R/\$18.1868 - 16/07/2024)

EXCHANGE RATE USED IN BASIC FUEL PRICE



INTERNATIONAL PRODUCT PRICES OF BASKET USED IN BASIC FUEL PRICE



BASIC FUEL PRICE IN SA CENTS PER LITRE

