

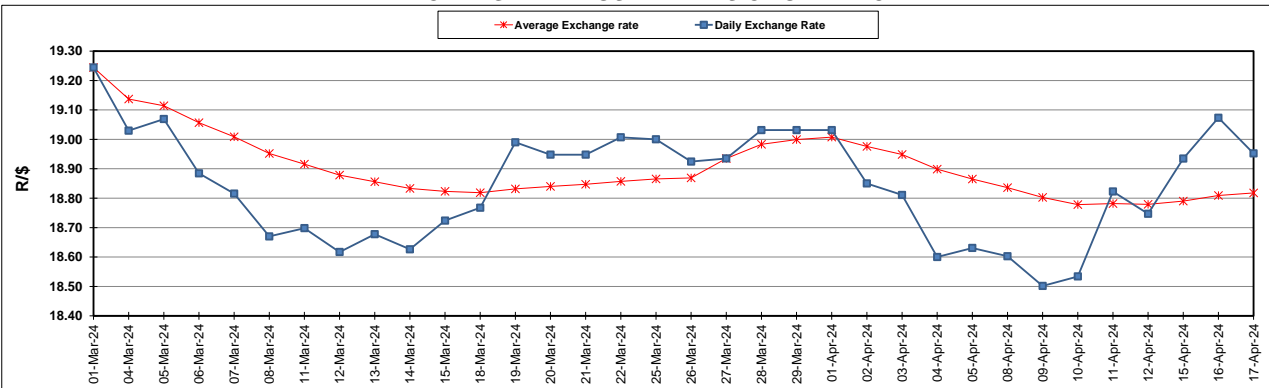
South African Cents per Litre (SA c/l)	PETROL 95 ULP	PETROL 93 ULP & LRP	DIESEL 0.05%	DIESEL 0.005%	ILL. PAR.
GAUTENG PUMP PRICE AS FROM 03/04/2024	2,512.000	2,478.000	-	-	-
WHOLESALE PRICE AS FROM 03/04/2024	-	-	2,245.090	2,259.490	1,618.938
SINGLE NATIONAL MAXIMUM RETAIL PRICE AS FROM 03/04/2024	-	-	-	-	2,079.000
BASIC FUEL PRICE - 17/04/2024	1,435.025	1,399.762	1,364.831	1,369.353	1,356.733
PRESS RELEASE CONTRIBUTION TO BFP 03/04/2024 - 17/04/2024	1,379.650	1,345.650	1,389.630	1,404.030	1,365.128
UNIT OVER/(UNDER) RECOVERY - 17/04/2024	(55.375)	(54.112)	24.799	34.677	8.395
AVERAGE BASIC FUEL PRICE 27/03/2024 - 17/04/2024	1,403.443	1,368.779	1,374.726	1,385.191	1,361.168
AVERAGE UNIT OVER/(UNDER) RECOVERY 27/03/2024 - 17/04/2024	(35.287)	(33.998)	23.967	29.464	15.210

### ANALYSIS MOVEMENT OF AVERAGE OVER/(UNDER) RECOVERY

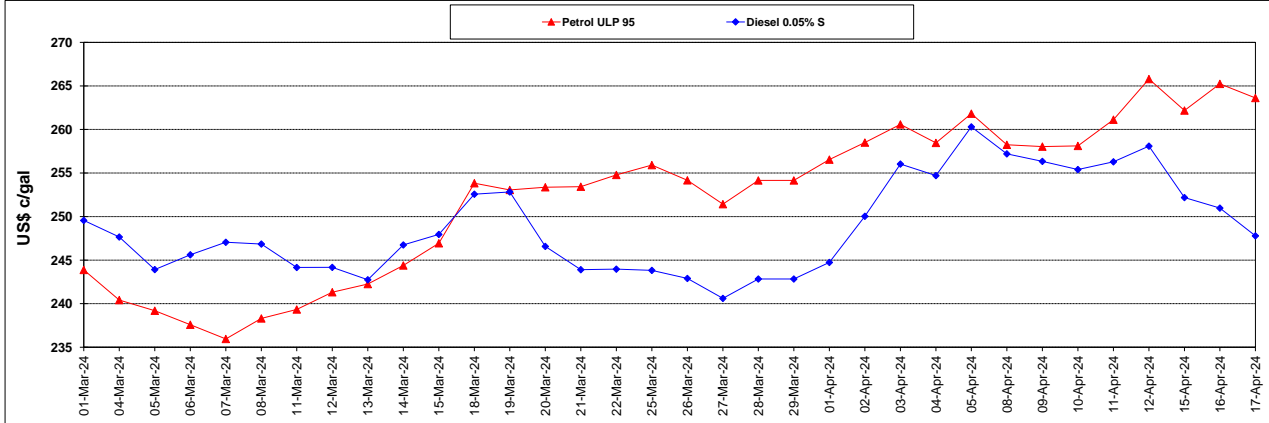
	PETROL 95	PETROL 93	DIESEL 0.05%	DIESEL 0.005%	ILL. PAR.
- MOVEMENT IN INTERNATIONAL PRODUCT PRICES	(39.083)	(37.700)	20.249	25.717	11.528
- MOVEMENT IN EXCHANGE RATE	3.796	3.702	3.718	3.747	3.682
AVERAGE UNIT OVER/(UNDER) RECOVERY 27/03/2024 - 17/04/2024	(35.287)	(33.998)	23.967	29.464	15.210

### R/\$ EXCHANGE RATE - (R/\$18.9520- 17/04/2024)

### EXCHANGE RATE USED IN BASIC FUEL PRICE



### INTERNATIONAL PRODUCT PRICES OF BASKET USED IN BASIC FUEL PRICE



### BASIC FUEL PRICE IN SA CENTS PER LITRE

