

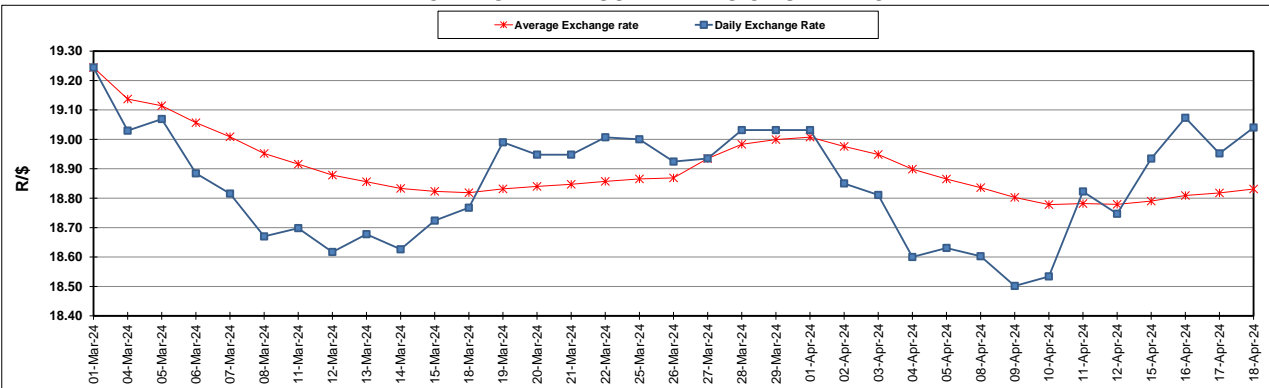
South African Cents per Litre (SA c/l)	PETROL 95 ULP	PETROL 93 ULP & LRP	DIESEL 0.05%	DIESEL 0.005%	ILL. PAR.
GAUTENG PUMP PRICE AS FROM 03/04/2024	2,512.000	2,478.000	-	-	-
WHOLESALE PRICE AS FROM 03/04/2024	-	-	2,245.090	2,259.490	1,618.938
SINGLE NATIONAL MAXIMUM RETAIL PRICE AS FROM 03/04/2024	-	-	-	-	2,079.000
BASIC FUEL PRICE - 18/04/2024	1,411.852	1,376.444	1,323.202	1,328.111	1,320.219
PRESS RELEASE CONTRIBUTION TO BFP 03/04/2024 - 18/04/2024	1,379.650	1,345.650	1,389.630	1,404.030	1,365.128
UNIT OVER/(UNDER) RECOVERY - 18/04/2024	(32.202)	(30.794)	66.428	75.919	44.909
AVERAGE BASIC FUEL PRICE 27/03/2024 - 18/04/2024	1,403.938	1,369.230	1,371.695	1,381.833	1,358.759
AVERAGE UNIT OVER/(UNDER) RECOVERY 27/03/2024 - 18/04/2024	(35.106)	(33.809)	26.464	32.197	16.957

ANALYSIS MOVEMENT OF AVERAGE OVER/(UNDER) RECOVERY

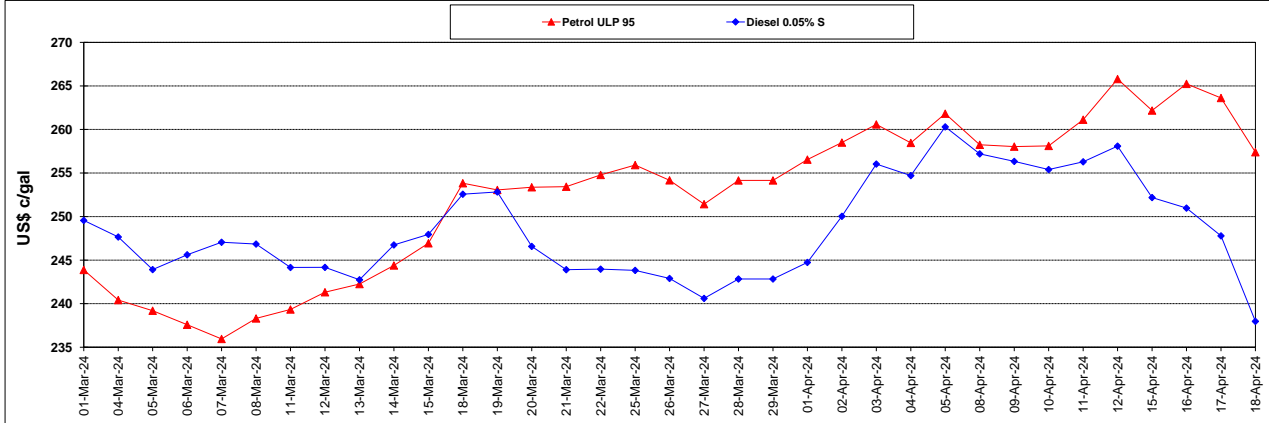
	PETROL 95	PETROL 93	DIESEL 0.05%	DIESEL 0.005%	ILL. PAR.
- MOVEMENT IN INTERNATIONAL PRODUCT PRICES	(37.924)	(36.557)	23.711	29.423	14.230
- MOVEMENT IN EXCHANGE RATE	2.818	2.748	2.753	2.774	2.727
AVERAGE UNIT OVER/(UNDER) RECOVERY 27/03/2024 - 18/04/2024	(35.106)	(33.809)	26.464	32.197	16.957

R/\$ EXCHANGE RATE - (R/\$19.0400- 18/04/2024)

EXCHANGE RATE USED IN BASIC FUEL PRICE



INTERNATIONAL PRODUCT PRICES OF BASKET USED IN BASIC FUEL PRICE



BASIC FUEL PRICE IN SA CENTS PER LITRE

