

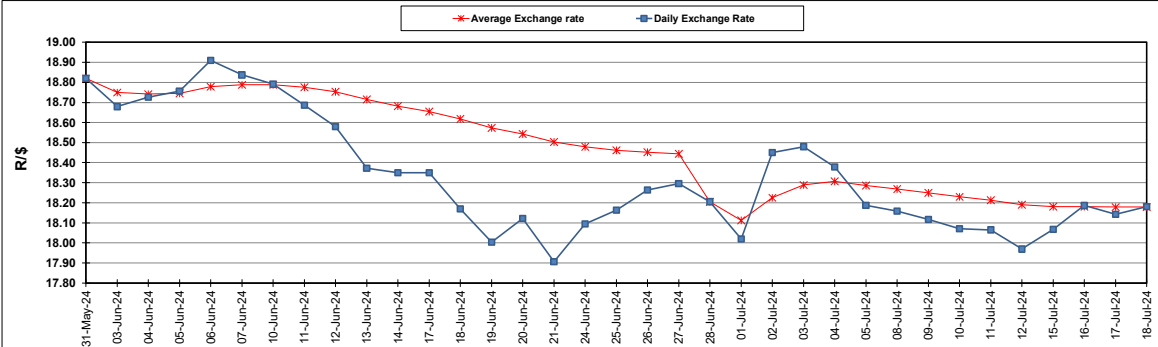
South African Cents per Litre (SA c/l)	PETROL 95 ULP	PETROL 93 ULP & LRP	DIESEL 0.05%	DIESEL 0.005%	ILL. PAR.
GAUTENG PUMP PRICE AS FROM 04/07/2024	2,326.000	2,286.000	-	-	-
WHOLESALE PRICE AS FROM 04/07/2024	-	-	2,066.170	2,090.570	1,501.938
SINGLE NATIONAL MAXIMUM RETAIL PRICE AS FROM 04/07/2024	-	-	-	-	1,923.000
BASIC FUEL PRICE - 18/07/2024	1,219.995	1,186.094	1,209.352	1,243.382	1,227.806
PRESS RELEASE CONTRIBUTION TO BFP 04/07/2024 - 18/07/2024	1,215.570	1,175.570	1,232.630	1,257.030	1,248.128
UNIT OVER/(UNDER) RECOVERY - 18/07/2024	(4.425)	(10.524)	23.278	13.648	20.322
AVERAGE BASIC FUEL PRICE 28/06/2024 - 18/07/2024	1,234.034	1,199.631	1,232.234	1,268.620	1,252.301
AVERAGE UNIT OVER/(UNDER) RECOVERY 28/06/2024 - 18/07/2024	6.768	2.770	7.329	(6.257)	0.627

ANALYSIS MOVEMENT OF AVERAGE OVER/(UNDER) RECOVERY

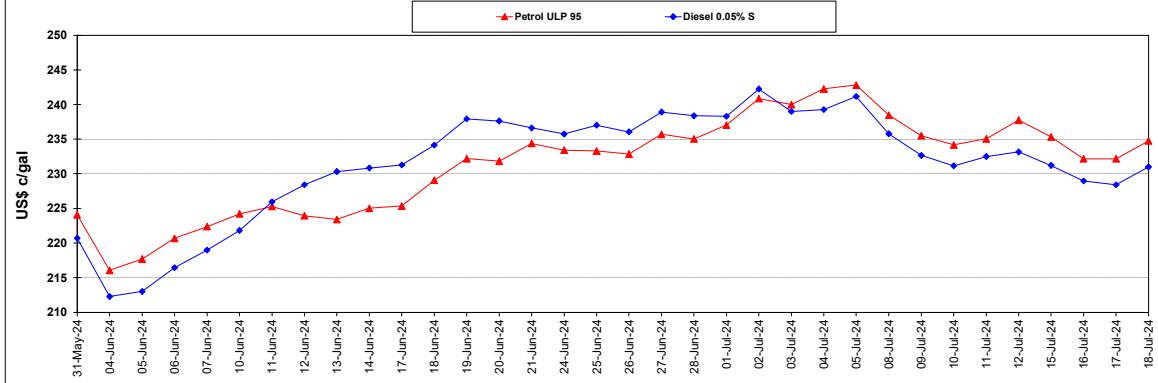
	PETROL 95	PETROL 93	DIESEL 0.05%	DIESEL 0.005%	ILL. PAR.
- MOVEMENT IN INTERNATIONAL PRODUCT PRICES	(11.242)	(14.737)	(10.654)	(24.771)	(17.649)
- MOVEMENT IN EXCHANGE RATE	18.010	17.508	17.983	18.514	18.276
AVERAGE UNIT OVER/(UNDER) RECOVERY 28/06/2024 - 18/07/2024	6.768	2.770	7.329	(6.257)	0.627

R/\$ EXCHANGE RATE - (R/\$18.1805 - 18/07/2024)

EXCHANGE RATE USED IN BASIC FUEL PRICE



INTERNATIONAL PRODUCT PRICES OF BASKET USED IN BASIC FUEL PRICE



BASIC FUEL PRICE IN SA CENTS PER LITRE

