

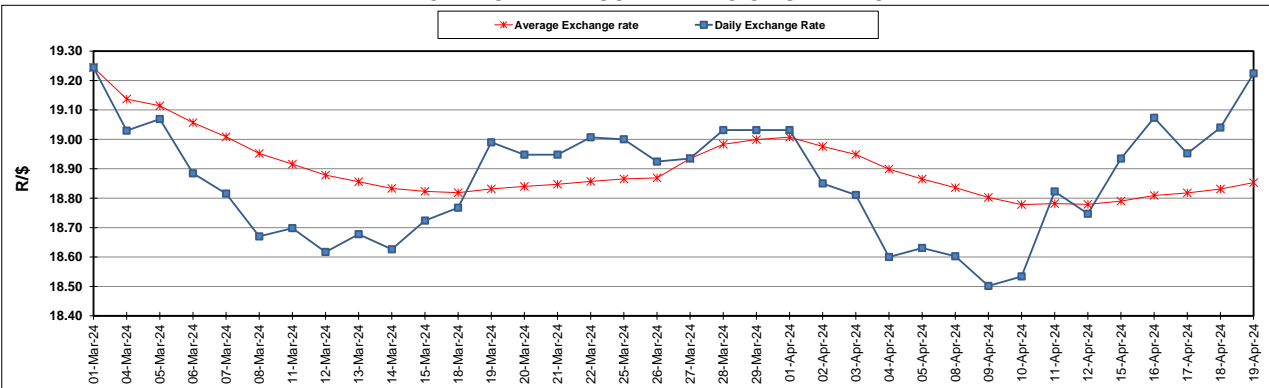
South African Cents per Litre (SA c/l)	PETROL 95 ULP	PETROL 93 ULP & LRP	DIESEL 0.05%	DIESEL 0.005%	ILL. PAR.
GAUTENG PUMP PRICE AS FROM 03/04/2024	2,512.000	2,478.000	-	-	-
WHOLESALE PRICE AS FROM 03/04/2024	-	-	2,245.090	2,259.490	1,618.938
SINGLE NATIONAL MAXIMUM RETAIL PRICE AS FROM 03/04/2024	-	-	-	-	2,079.000
BASIC FUEL PRICE - 19/04/2024	1,422.652	1,386.902	1,331.883	1,337.753	1,327.256
PRESS RELEASE CONTRIBUTION TO BFP 03/04/2024 - 19/04/2024	1,379.650	1,345.650	1,389.630	1,404.030	1,365.128
UNIT OVER/(UNDER) RECOVERY - 19/04/2024	(43.002)	(41.252)	57.747	66.277	37.872
AVERAGE BASIC FUEL PRICE 27/03/2024 - 19/04/2024	1,404.977	1,370.212	1,369.483	1,379.384	1,357.009
AVERAGE UNIT OVER/(UNDER) RECOVERY 27/03/2024 - 19/04/2024	(35.544)	(34.223)	28.203	34.090	18.119

ANALYSIS MOVEMENT OF AVERAGE OVER/(UNDER) RECOVERY

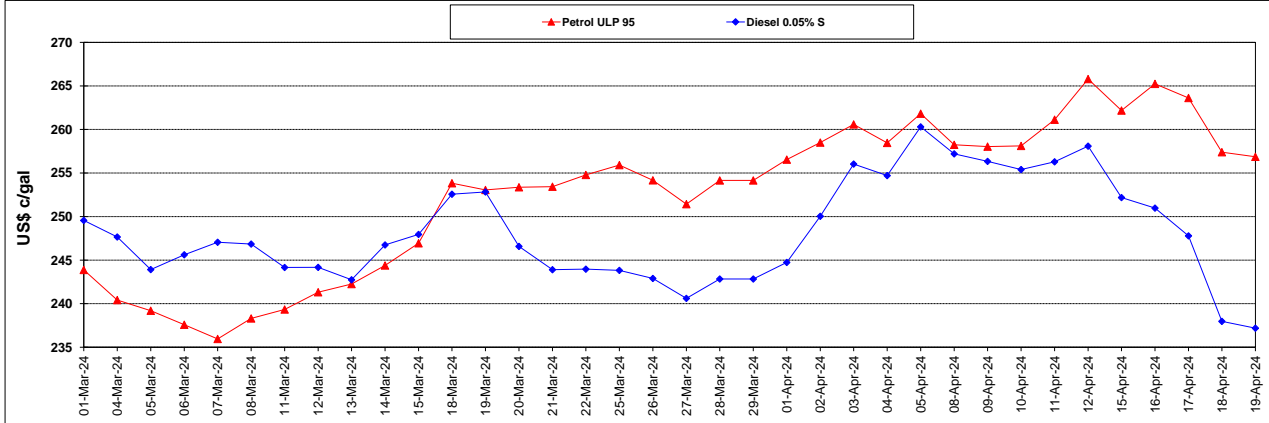
	PETROL 95	PETROL 93	DIESEL 0.05%	DIESEL 0.005%	ILL. PAR.
- MOVEMENT IN INTERNATIONAL PRODUCT PRICES	(36.736)	(35.386)	27.041	32.919	16.967
- MOVEMENT IN EXCHANGE RATE	1.192	1.163	1.162	1.171	1.152
AVERAGE UNIT OVER/(UNDER) RECOVERY 27/03/2024 - 19/04/2024	(35.544)	(34.223)	28.203	34.090	18.119

R/\$ EXCHANGE RATE - (R/\$19.2240- 19/04/2024)

EXCHANGE RATE USED IN BASIC FUEL PRICE



INTERNATIONAL PRODUCT PRICES OF BASKET USED IN BASIC FUEL PRICE



BASIC FUEL PRICE IN SA CENTS PER LITRE

