

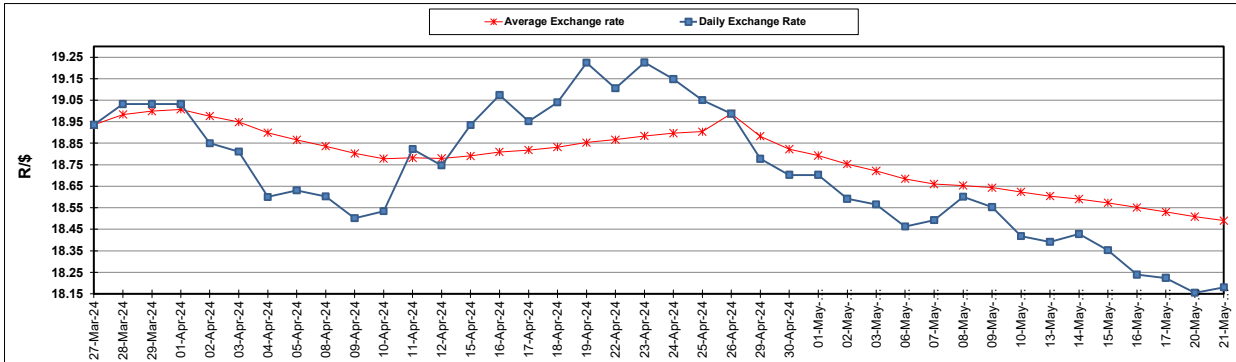
South African Cents per Litre (SA c/l)	PETROL 95 ULP	PETROL 93 ULP & LRP	DIESEL 0.05%	DIESEL 0.005%	ILL. PAR.
GAUTENG PUMP PRICE AS FROM 01/05/2024	2,549.000	2,515.000	-	-	-
WHOLESALE PRICE AS FROM 01/05/2024	-	-	2,215.090	2,223.490	1,599.938
SINGLE NATIONAL MAXIMUM RETAIL PRICE AS FROM 01/05/2024	-	-	-	-	2,054.000
BASIC FUEL PRICE - 21/05/2024	1,268.371	1,237.853	1,229.468	1,264.234	1,259.759
PRESS RELEASE CONTRIBUTION TO BFP 01/05/2024 - 21/05/2024	1,416.650	1,382.650	1,359.630	1,368.030	1,346.128
UNIT OVER/(UNDER) RECOVERY - 21/05/2024	148.279	144.797	130.162	103.796	86.369
AVERAGE BASIC FUEL PRICE 26/04/2024 - 21/05/2024	1,323.189	1,287.842	1,272.854	1,286.808	1,271.517
AVERAGE UNIT OVER/(UNDER) RECOVERY 26/04/2024 - 21/05/2024	87.294	88.641	91.776	87.222	77.778

ANALYSIS MOVEMENT OF AVERAGE OVER/(UNDER) RECOVERY

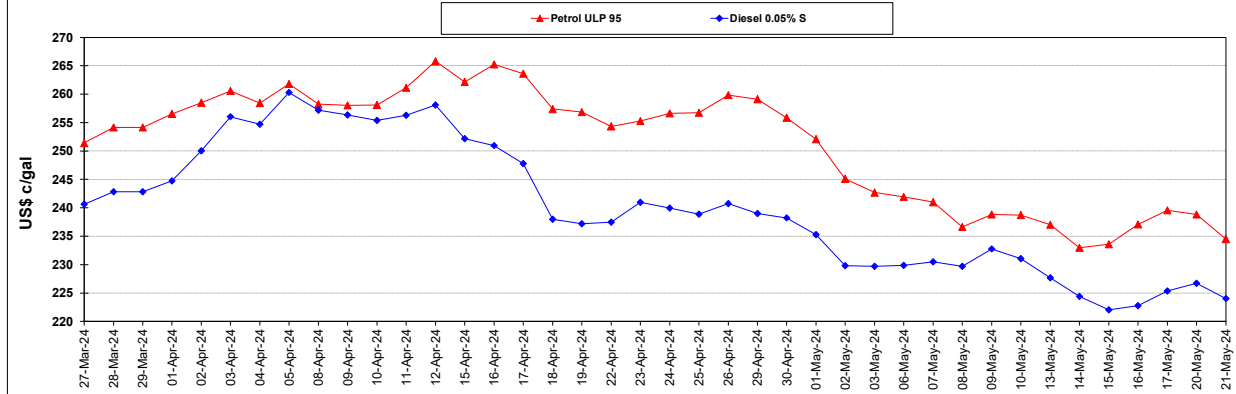
	PETROL 95	PETROL 93	DIESEL 0.05%	DIESEL 0.005%	ILL. PAR.
- MOVEMENT IN INTERNATIONAL PRODUCT PRICES	57.703	59.841	63.311	58.445	49.343
- MOVEMENT IN EXCHANGE RATE	29.591	28.800	28.465	28.777	28.435
AVERAGE UNIT OVER/(UNDER) RECOVERY 26/04/2024 - 21/05/2024	87.294	88.641	91.776	87.222	77.778

R/\$ EXCHANGE RATE - (R/\$18.1800 - 21/05/2024)

EXCHANGE RATE USED IN BASIC FUEL PRICE



INTERNATIONAL PRODUCT PRICES OF BASKET USED IN BASIC FUEL PRICE



BASIC FUEL PRICE IN SA CENTS PER LITRE

