

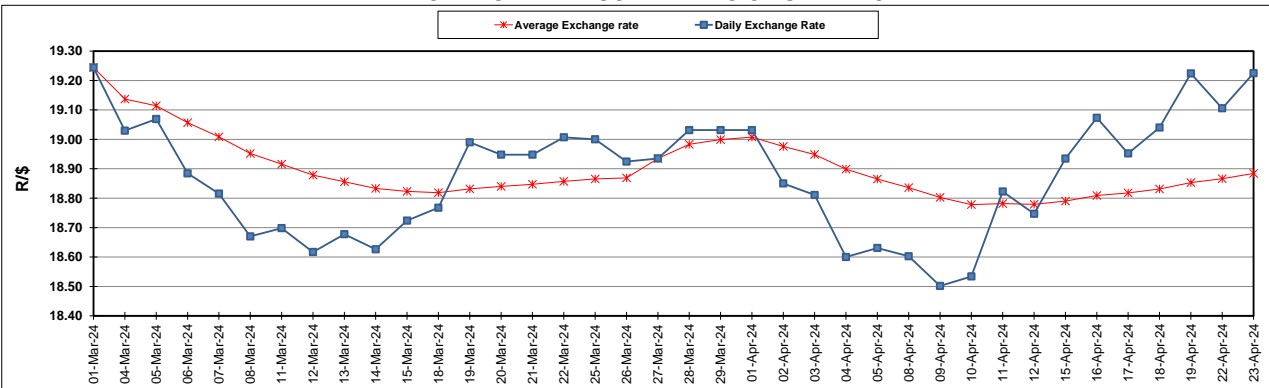
South African Cents per Litre (SA c/l)	PETROL 95 ULP	PETROL 93 ULP & LRP	DIESEL 0.05%	DIESEL 0.005%	ILL. PAR.
GAUTENG PUMP PRICE AS FROM 03/04/2024	2,512.000	2,478.000	-	-	-
WHOLESALE PRICE AS FROM 03/04/2024	-	-	2,245.090	2,259.490	1,618.938
SINGLE NATIONAL MAXIMUM RETAIL PRICE AS FROM 03/04/2024	-	-	-	-	2,079.000
BASIC FUEL PRICE - 23/04/2024	1,416.271	1,380.519	1,353.265	1,357.560	1,339.004
PRESS RELEASE CONTRIBUTION TO BFP 03/04/2024 - 23/04/2024	1,379.650	1,345.650	1,389.630	1,404.030	1,365.128
UNIT OVER/(UNDER) RECOVERY - 23/04/2024	(36.621)	(34.869)	36.365	46.470	26.124
AVERAGE BASIC FUEL PRICE 27/03/2024 - 23/04/2024	1,405.431	1,370.578	1,366.553	1,375.920	1,354.252
AVERAGE UNIT OVER/(UNDER) RECOVERY 27/03/2024 - 23/04/2024	(34.976)	(33.623)	30.327	36.610	19.876

ANALYSIS MOVEMENT OF AVERAGE OVER/(UNDER) RECOVERY

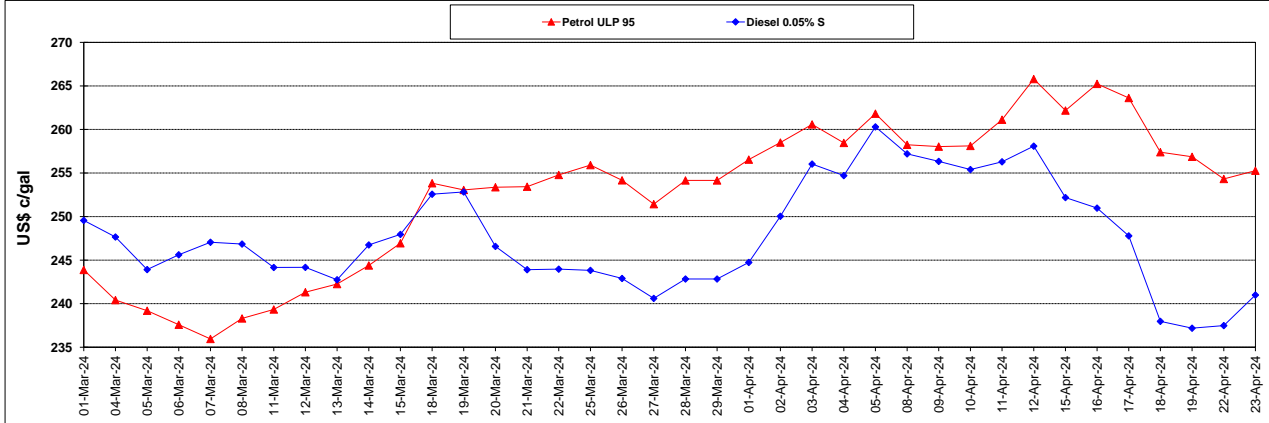
	PETROL 95	PETROL 93	DIESEL 0.05%	DIESEL 0.005%	ILL. PAR.
- MOVEMENT IN INTERNATIONAL PRODUCT PRICES	(33.845)	(32.520)	31.427	37.717	20.966
- MOVEMENT IN EXCHANGE RATE	(1.131)	(1.103)	(1.100)	(1.107)	(1.090)
AVERAGE UNIT OVER/(UNDER) RECOVERY 27/03/2024 - 22/04/2024	(34.976)	(33.623)	30.327	36.610	19.876

R/\$ EXCHANGE RATE - (R/\$19.2250- 23/04/2024)

EXCHANGE RATE USED IN BASIC FUEL PRICE



INTERNATIONAL PRODUCT PRICES OF BASKET USED IN BASIC FUEL PRICE



BASIC FUEL PRICE IN SA CENTS PER LITRE

