

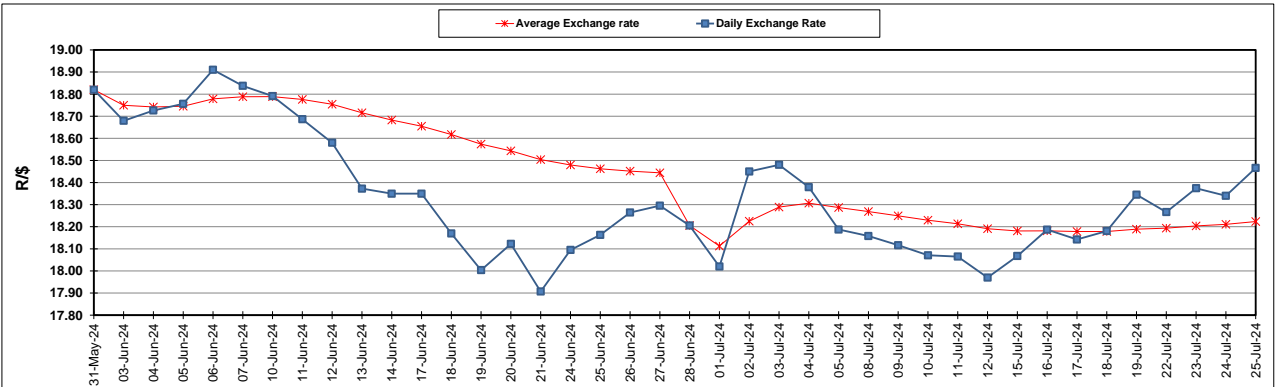
South African Cents per Litre (SA c/l)	PETROL 95 ULP	PETROL 93 ULP & LRP	DIESEL 0.05%	DIESEL 0.005%	ILL. PAR.
GAUTENG PUMP PRICE AS FROM 04/07/2024	2,326.000	2,286.000	-	-	-
WHOLESALE PRICE AS FROM 04/07/2024	-	-	2,066.170	2,090.570	1,501.938
SINGLE NATIONAL MAXIMUM RETAIL PRICE AS FROM 04/07/2024	-	-	-	-	1,923.000
BASIC FUEL PRICE - 25/07/2024	1,194.872	1,160.437	1,185.956	1,222.257	1,206.539
PRESS RELEASE CONTRIBUTION TO BFP 04/07/2024 - 25/07/2024	1,215.570	1,175.570	1,232.630	1,257.030	1,248.128
UNIT OVER/(UNDER) RECOVERY - 25/07/2024	20.698	15.133	46.674	34.773	41.589
AVERAGE BASIC FUEL PRICE 28/06/2024 - 25/07/2024	1,224.923	1,190.563	1,220.154	1,256.339	1,240.159
AVERAGE UNIT OVER/(UNDER) RECOVERY 28/06/2024 - 25/07/2024	9.571	5.131	17.676	4.691	11.569

ANALYSIS MOVEMENT OF AVERAGE OVER/(UNDER) RECOVERY

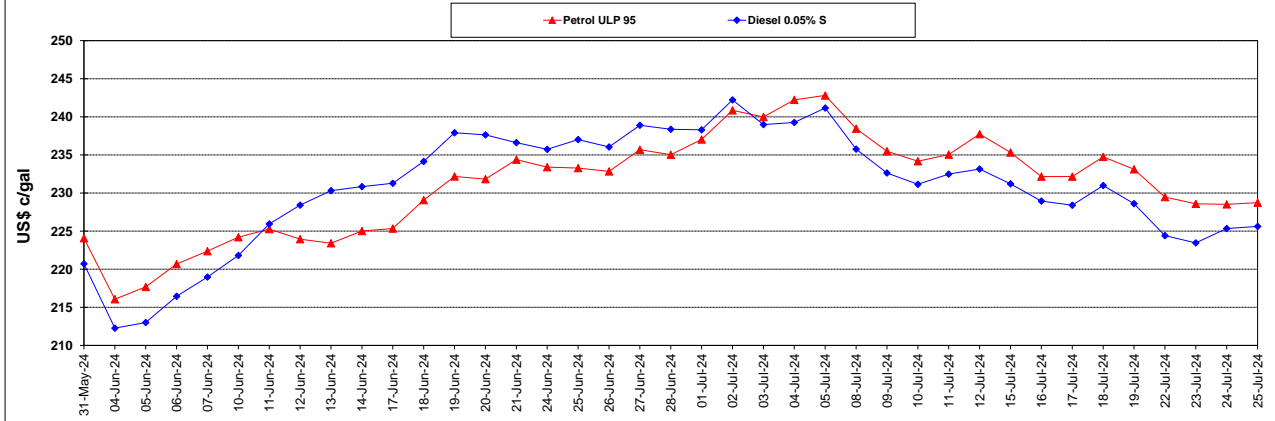
	PETROL 95	PETROL 93	DIESEL 0.05%	DIESEL 0.005%	ILL. PAR.
- MOVEMENT IN INTERNATIONAL PRODUCT PRICES	(5.244)	(9.268)	2.919	(10.504)	(3.430)
- MOVEMENT IN EXCHANGE RATE	14.815	14.399	14.757	15.195	14.999
AVERAGE UNIT OVER/(UNDER) RECOVERY 28/06/2024 - 25/07/2024	9.571	5.131	17.676	4.691	11.569

R/\$ EXCHANGE RATE - (R/\$18.466 - 25/07/2024)

EXCHANGE RATE USED IN BASIC FUEL PRICE



INTERNATIONAL PRODUCT PRICES OF BASKET USED IN BASIC FUEL PRICE



BASIC FUEL PRICE IN SA CENTS PER LITRE

