

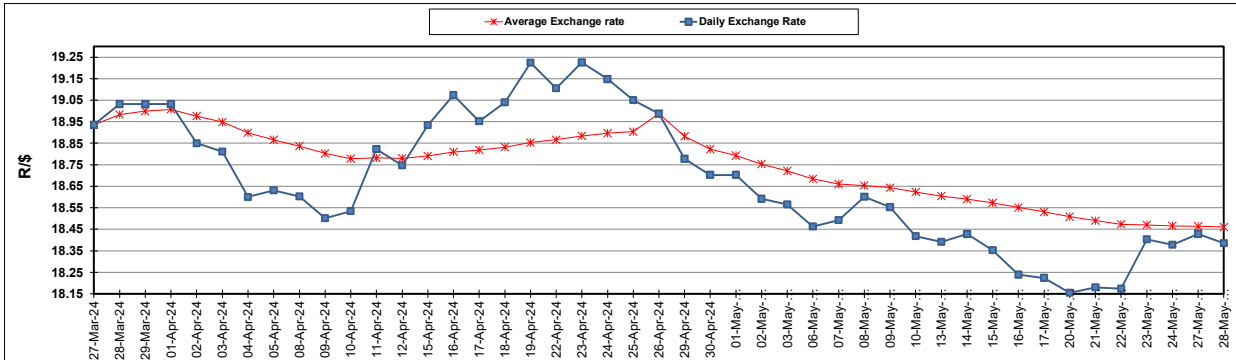
South African Cents per Litre (SA c/l)	PETROL 95 ULP	PETROL 93 ULP & LRP	DIESEL 0.05%	DIESEL 0.005%	ILL. PAR.
GAUTENG PUMP PRICE AS FROM 01/05/2024	2,549.000	2,515.000	-	-	-
WHOLESALE PRICE AS FROM 01/05/2024	-	-	2,215.090	2,223.490	1,599.938
SINGLE NATIONAL MAXIMUM RETAIL PRICE AS FROM 01/05/2024	-	-	-	-	2,054.000
BASIC FUEL PRICE - 28/05/2024	1,266.315	1,238.949	1,256.680	1,284.754	1,273.783
PRESS RELEASE CONTRIBUTION TO BFP 01/05/2024 - 28/05/2024	1,416.650	1,382.650	1,359.630	1,368.030	1,346.128
UNIT OVER/(UNDER) RECOVERY - 28/05/2024	150.335	143.701	102.950	83.276	72.345
AVERAGE BASIC FUEL PRICE 26/04/2024 - 28/05/2024	1,309.520	1,275.678	1,262.747	1,281.496	1,268.022
AVERAGE UNIT OVER/(UNDER) RECOVERY 26/04/2024 - 28/05/2024	102.304	102.146	100.796	91.230	80.584

ANALYSIS MOVEMENT OF AVERAGE OVER/(UNDER) RECOVERY

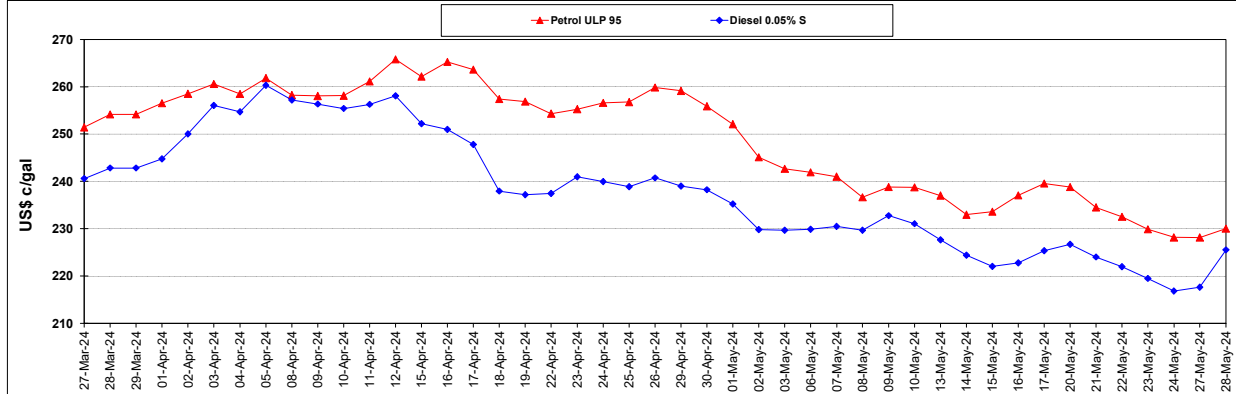
	PETROL 95	PETROL 93	DIESEL 0.05%	DIESEL 0.005%	ILL. PAR.
- MOVEMENT IN INTERNATIONAL PRODUCT PRICES	70.858	71.512	70.473	60.457	50.134
- MOVEMENT IN EXCHANGE RATE	31.446	30.634	30.323	30.773	30.450
AVERAGE UNIT OVER/(UNDER) RECOVERY 26/04/2024 - 28/05/2024	102.304	102.146	100.796	91.230	80.584

R/\$ EXCHANGE RATE - (R/\$18.3848 - 28/05/2024)

EXCHANGE RATE USED IN BASIC FUEL PRICE



INTERNATIONAL PRODUCT PRICES OF BASKET USED IN BASIC FUEL PRICE



BASIC FUEL PRICE IN SA CENTS PER LITRE

