

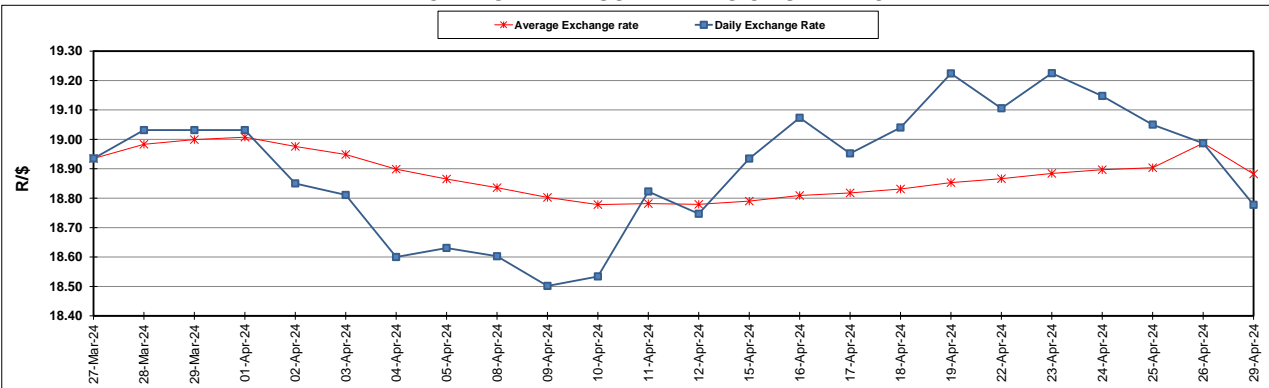
South African Cents per Litre (SA c/l)	PETROL 95 ULP	PETROL 93 ULP & LRP	DIESEL 0.05%	DIESEL 0.005%	ILL. PAR.
GAUTENG PUMP PRICE AS FROM 01/05/2024	2,549.000	2,515.000	-	-	-
WHOLESALE PRICE AS FROM 01/05/2024	-	-	2,215.090	2,223.490	1,599.938
SINGLE NATIONAL MAXIMUM RETAIL PRICE AS FROM 01/05/2024	-	-	-	-	2,054.000
BASIC FUEL PRICE - 29/04/2024	1,455.275	1,419.967	1,371.540	1,376.704	1,358.554
PRESS RELEASE CONTRIBUTION TO BFP 26/04/2024 - 29/04/2024	1,379.650	1,345.650	1,389.630	1,404.030	1,365.128
UNIT OVER/(UNDER) RECOVERY - 29/04/2024	(75.625)	(74.317)	18.090	27.326	6.574
AVERAGE BASIC FUEL PRICE 26/04/2024 - 29/04/2024	1,455.275	1,419.967	1,371.540	1,376.704	1,358.554
AVERAGE UNIT OVER/(UNDER) RECOVERY 26/04/2024 - 29/04/2024	(75.625)	(74.317)	18.090	27.326	6.574

ANALYSIS MOVEMENT OF AVERAGE OVER/(UNDER) RECOVERY

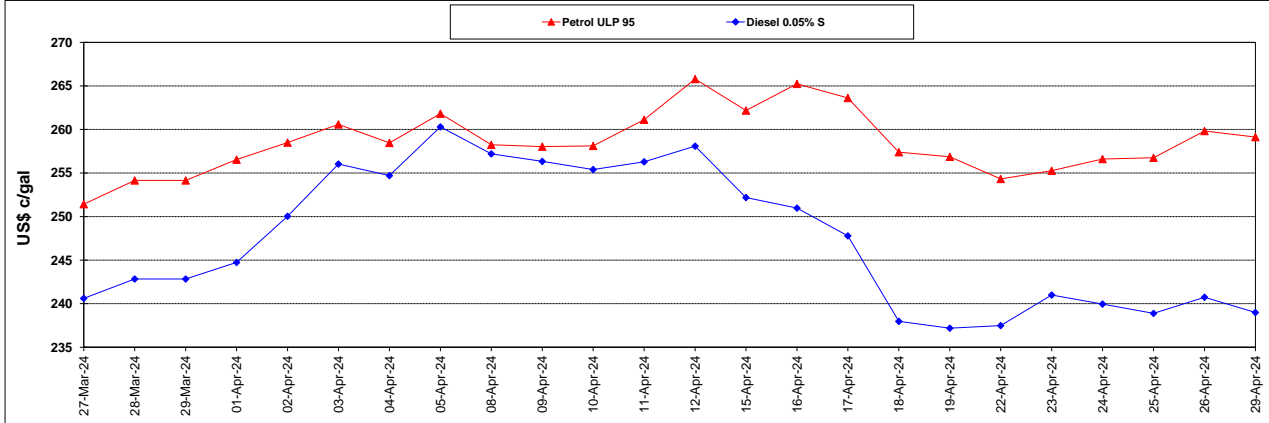
	PETROL 95	PETROL 93	DIESEL 0.05%	DIESEL 0.005%	ILL. PAR.
- MOVEMENT IN INTERNATIONAL PRODUCT PRICES	(69.233)	(68.080)	24.114	33.373	12.541
- MOVEMENT IN EXCHANGE RATE	(6.392)	(6.237)	(6.024)	(6.047)	(5.967)
AVERAGE UNIT OVER/(UNDER) RECOVERY 29/04/2024 - 29/04/2024	(75.625)	(74.317)	18.090	27.326	6.574

R/\$ EXCHANGE RATE - (R/\$18.77750- 29/04/2024)

EXCHANGE RATE USED IN BASIC FUEL PRICE



INTERNATIONAL PRODUCT PRICES OF BASKET USED IN BASIC FUEL PRICE



BASIC FUEL PRICE IN SA CENTS PER LITRE

