

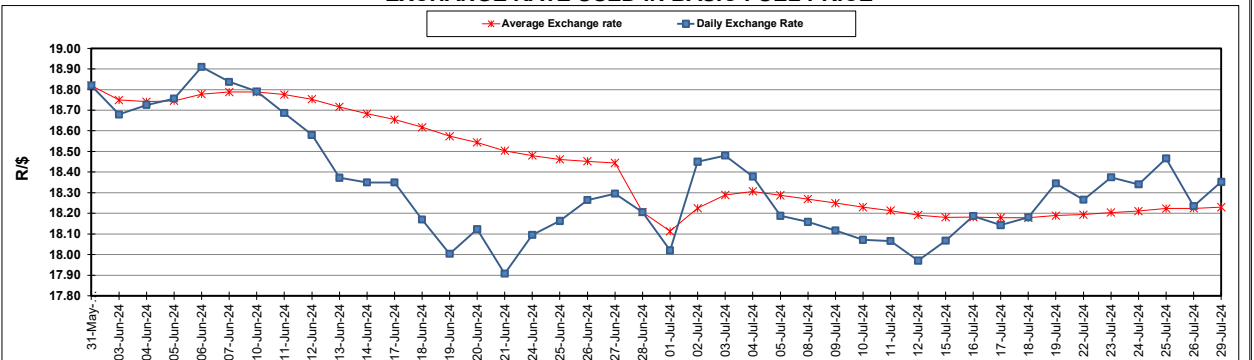
South African Cents per Litre (SA c/l)	PETROL 95 ULP	PETROL 93 ULP & LRP	DIESEL 0.05%	DIESEL 0.005%	ILL. PAR.
GAUTENG PUMP PRICE AS FROM 04/07/2024	2,326.000	2,286.000	-	-	-
WHOLESALE PRICE AS FROM 04/07/2024	-	-	2,066.170	2,090.570	1,501.938
SINGLE NATIONAL MAXIMUM RETAIL PRICE AS FROM 04/07/2024	-	-	-	-	1,923.000
BASIC FUEL PRICE - 29/07/2024	1,189.790	1,155.569	1,164.706	1,199.800	1,185.305
PRESS RELEASE CONTRIBUTION TO BFP 04/07/2024 - 29/07/2024	1,215.570	1,175.570	1,232.630	1,257.030	1,248.128
UNIT OVER/(UNDER) RECOVERY - 29/07/2024	25.780	20.001	67.924	57.230	62.823
AVERAGE BASIC FUEL PRICE 28/06/2024 - 29/07/2024	1,221.483	1,187.146	1,215.276	1,251.391	1,235.292
AVERAGE UNIT OVER/(UNDER) RECOVERY 28/06/2024 - 29/07/2024	11.291	6.719	22.081	9.275	16.109

ANALYSIS MOVEMENT OF AVERAGE OVER/(UNDER) RECOVERY

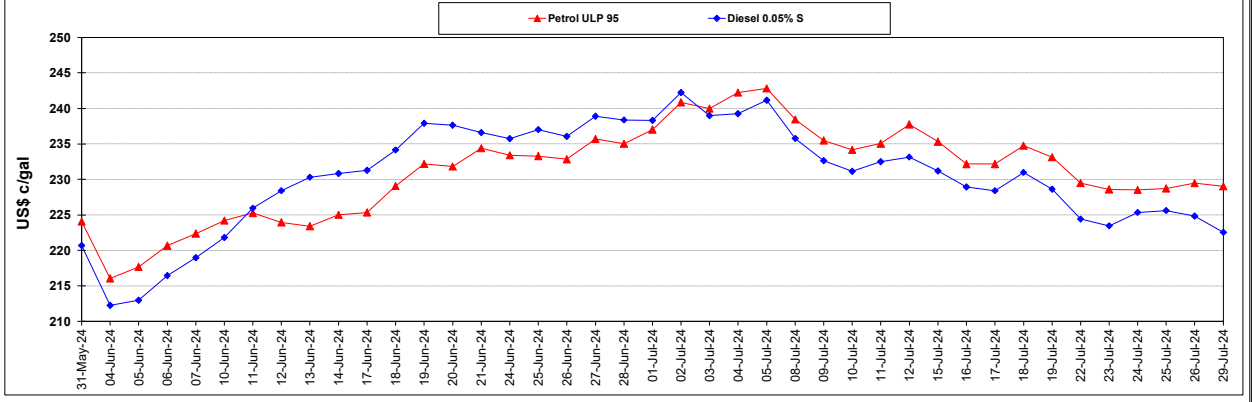
	PETROL 95	PETROL 93	DIESEL 0.05%	DIESEL 0.005%	ILL. PAR.
- MOVEMENT IN INTERNATIONAL PRODUCT PRICES	(3.048)	(7.217)	7.815	(5.415)	1.608
- MOVEMENT IN EXCHANGE RATE	14.339	13.936	14.266	14.690	14.501
AVERAGE UNIT OVER/(UNDER) RECOVERY 28/06/2024 - 29/07/2024	11.291	6.719	22.081	9.275	16.109

R/\$ EXCHANGE RATE - (R/\$18.3525 - 29/07/2024)

EXCHANGE RATE USED IN BASIC FUEL PRICE



INTERNATIONAL PRODUCT PRICES OF BASKET USED IN BASIC FUEL PRICE



BASIC FUEL PRICE IN SA CENTS PER LITRE

