

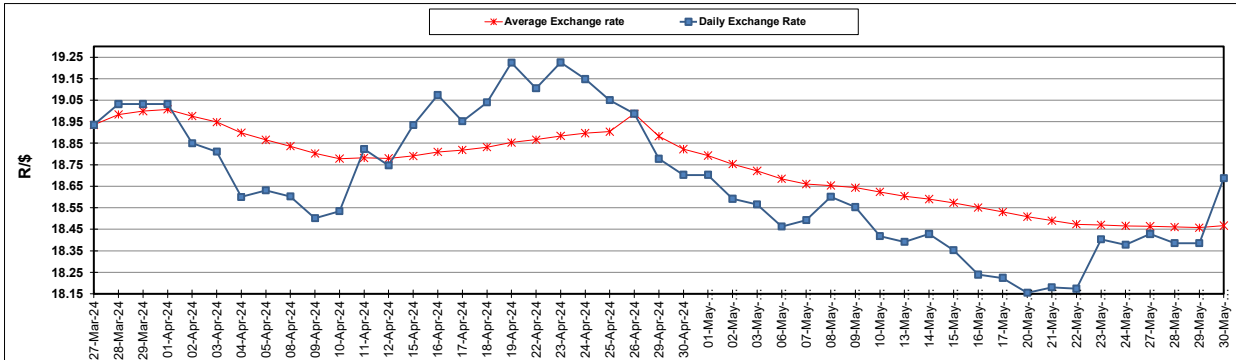
South African Cents per Litre (SA c/l)	PETROL 95 ULP	PETROL 93 ULP & LRP	DIESEL 0.05%	DIESEL 0.005%	ILL. PAR.
GAUTENG PUMP PRICE AS FROM 01/05/2024	2,549.000	2,515.000	-	-	-
WHOLESALE PRICE AS FROM 01/05/2024	-	-	2,215.090	2,223.490	1,599.938
SINGLE NATIONAL MAXIMUM RETAIL PRICE AS FROM 01/05/2024	-	-	-	-	2,054.000
BASIC FUEL PRICE - 30/05/2024	1,255.487	1,221.680	1,261.891	1,284.038	1,268.158
PRESS RELEASE CONTRIBUTION TO BFP 01/05/2024 - 30/05/2024	1,416.650	1,382.650	1,359.630	1,368.030	1,346.128
UNIT OVER/(UNDER) RECOVERY - 30/05/2024	161.163	160.970	97.739	83.992	77.970
AVERAGE BASIC FUEL PRICE 26/04/2024 - 30/05/2024	1,305.756	1,271.939	1,262.786	1,281.800	1,268.216
AVERAGE UNIT OVER/(UNDER) RECOVERY 26/04/2024 - 30/05/2024	106.454	106.271	100.444	90.550	80.192

### ANALYSIS MOVEMENT OF AVERAGE OVER/(UNDER) RECOVERY

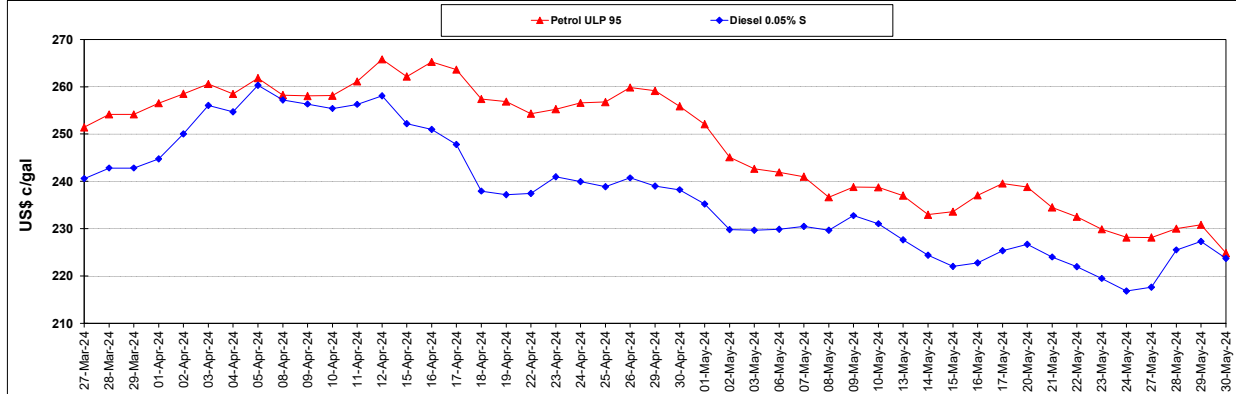
	PETROL 95	PETROL 93	DIESEL 0.05%	DIESEL 0.005%	ILL. PAR.
- MOVEMENT IN INTERNATIONAL PRODUCT PRICES	75.540	76.157	70.547	60.203	50.166
- MOVEMENT IN EXCHANGE RATE	30.914	30.114	29.897	30.347	30.026
AVERAGE UNIT OVER/(UNDER) RECOVERY 26/04/2024 - 30/05/2024	106.454	106.271	100.444	90.550	80.192

### R/\$ EXCHANGE RATE - (R/\$18.6870 - 30/05/2024)

### EXCHANGE RATE USED IN BASIC FUEL PRICE



### INTERNATIONAL PRODUCT PRICES OF BASKET USED IN BASIC FUEL PRICE



### BASIC FUEL PRICE IN SA CENTS PER LITRE

