

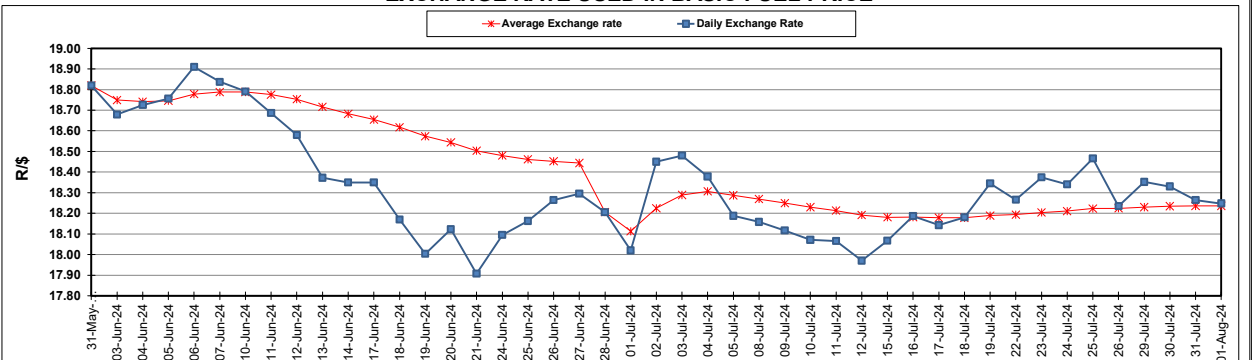
South African Cents per Litre (SA c/l)	PETROL 95 ULP	PETROL 93 ULP & LRP	DIESEL 0.05%	DIESEL 0.005%	ILL. PAR.
GAUTENG PUMP PRICE AS FROM 04/07/2024	2,326.000	2,286.000	-	-	-
WHOLESALE PRICE AS FROM 04/07/2024	-	-	2,066.170	2,090.570	1,501.938
SINGLE NATIONAL MAXIMUM RETAIL PRICE AS FROM 04/07/2024	-	-	-	-	1,923.000
BASIC FUEL PRICE - 01/08/2024	1,174.994	1,143.348	1,178.589	1,196.968	1,188.878
PRESS RELEASE CONTRIBUTION TO BFP 04/07/2024 - 01/08/2024	1,215.570	1,175.570	1,232.630	1,257.030	1,248.128
UNIT OVER/(UNDER) RECOVERY - 01/08/2024	40.576	32.222	54.041	60.062	59.250
AVERAGE BASIC FUEL PRICE 28/06/2024 - 01/08/2024	1,215.836	1,181.818	1,209.507	1,244.180	1,228.768
AVERAGE UNIT OVER/(UNDER) RECOVERY 28/06/2024 - 01/08/2024	14.873	9.851	27.283	16.050	22.240

**ANALYSIS MOVEMENT OF AVERAGE OVER/(UNDER) RECOVERY**

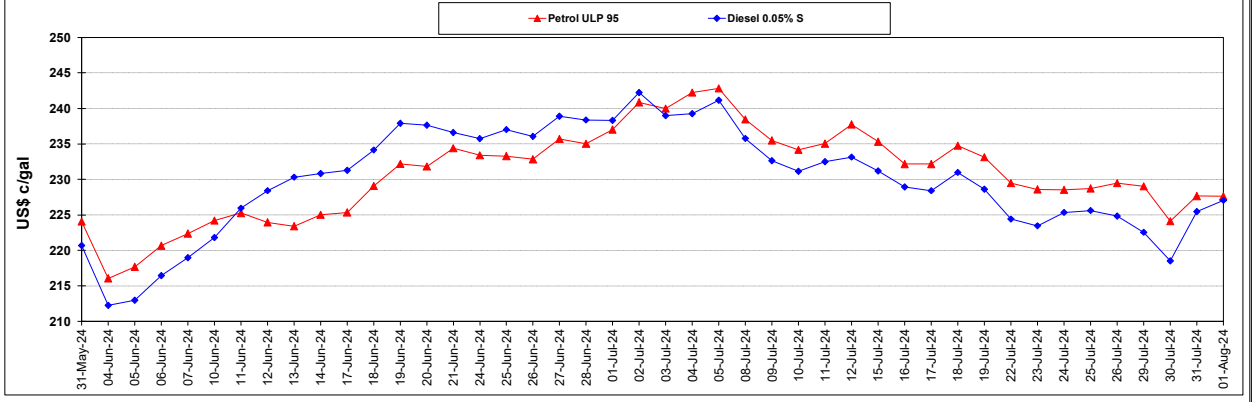
	PETROL 95	PETROL 93	DIESEL 0.05%	DIESEL 0.005%	ILL. PAR.
- MOVEMENT IN INTERNATIONAL PRODUCT PRICES	1.012	(3.622)	13.494	1.866	8.231
- MOVEMENT IN EXCHANGE RATE	13.861	13.473	13.789	14.184	14.009
AVERAGE UNIT OVER/(UNDER) RECOVERY 28/06/2024 - 01/08/2024	14.873	9.851	27.283	16.050	22.240

**R/\$ EXCHANGE RATE - (R/\$18.2478 - 01/08/2024)**

**EXCHANGE RATE USED IN BASIC FUEL PRICE**



**INTERNATIONAL PRODUCT PRICES OF BASKET USED IN BASIC FUEL PRICE**



**BASIC FUEL PRICE IN SA CENTS PER LITRE**

