

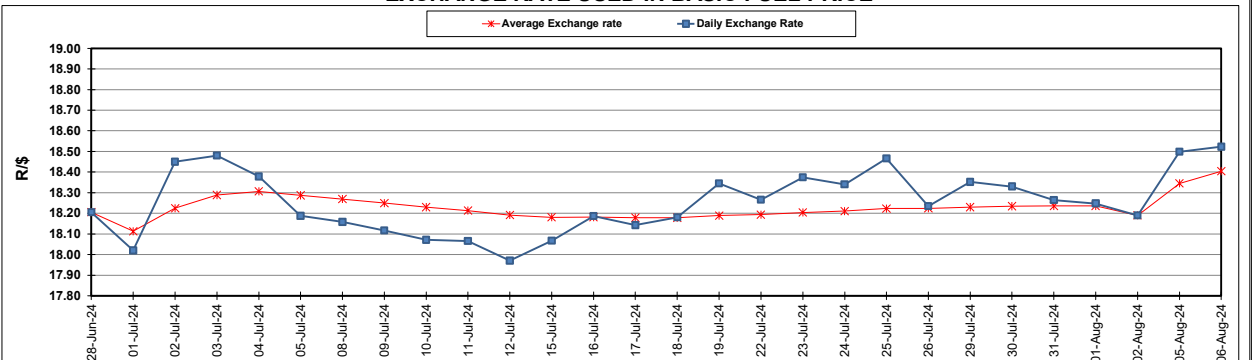
South African Cents per Litre (SA c/l)	PETROL 95 ULP	PETROL 93 ULP & LRP	DIESEL 0.05%	DIESEL 0.005%	ILL. PAR.
GAUTENG PUMP PRICE AS FROM 07/08/2024	2,311.000	2,271.000	-	-	-
WHOLESALE PRICE AS FROM 07/08/2024	-	-	2,038.170	2,073.570	1,479.938
SINGLE NATIONAL MAXIMUM RETAIL PRICE AS FROM 07/08/2024	-	-	-	-	1,894.000
BASIC FUEL PRICE - 06/08/2024	1,127.043	1,096.100	1,151.224	1,159.616	1,146.781
PRESS RELEASE CONTRIBUTION TO BFP 02/08/2024 - 06/08/2024	1,215.570	1,175.570	1,232.630	1,257.030	1,248.128
UNIT OVER/(UNDER) RECOVERY - 06/08/2024	88.527	79.470	81.406	97.414	101.347
AVERAGE BASIC FUEL PRICE 02/08/2024 - 06/08/2024	1,129.945	1,094.215	1,148.218	1,158.849	1,146.994
AVERAGE UNIT OVER/(UNDER) RECOVERY 02/08/2024 - 06/08/2024	85.625	81.355	84.412	98.181	101.134

**ANALYSIS MOVEMENT OF AVERAGE OVER/(UNDER) RECOVERY**

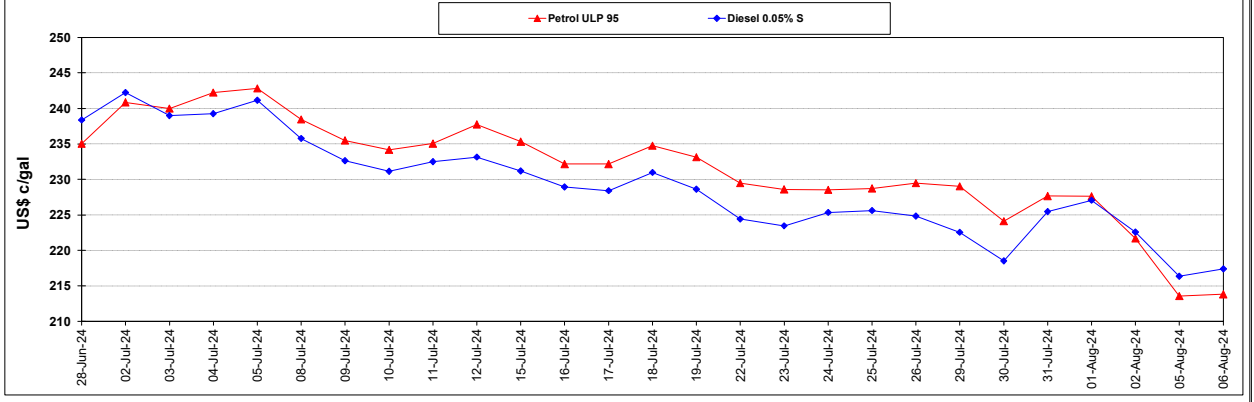
	PETROL 95	PETROL 93	DIESEL 0.05%	DIESEL 0.005%	ILL. PAR.
- MOVEMENT IN INTERNATIONAL PRODUCT PRICES	95.940	91.343	94.893	108.759	111.604
- MOVEMENT IN EXCHANGE RATE	(10.315)	(9.988)	(10.481)	(10.578)	(10.470)
AVERAGE UNIT OVER/(UNDER) RECOVERY 02/08/2024 - 06/08/2024	85.625	81.355	84.412	98.181	101.134

**R/\$ EXCHANGE RATE - (R/\$18.5228 - 06/08/2024)**

**EXCHANGE RATE USED IN BASIC FUEL PRICE**



**INTERNATIONAL PRODUCT PRICES OF BASKET USED IN BASIC FUEL PRICE**



**BASIC FUEL PRICE IN SA CENTS PER LITRE**

