

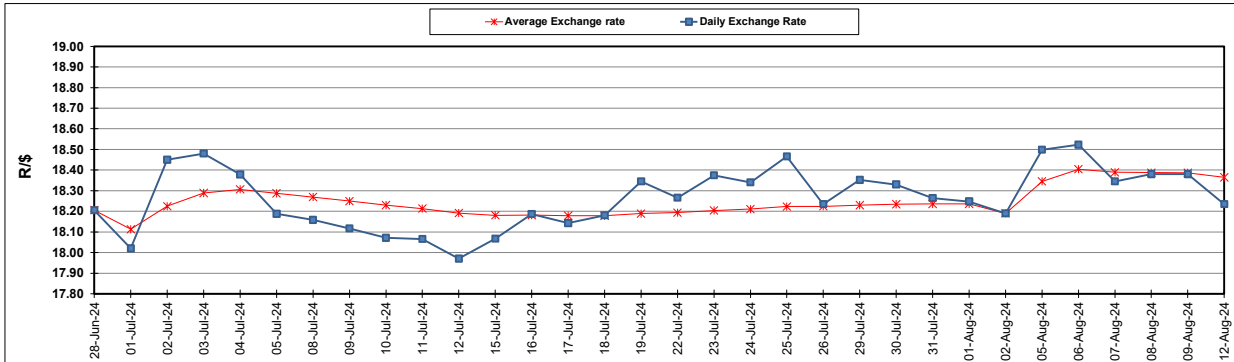
South African Cents per Litre (SA c/l)	PETROL 95 ULP	PETROL 93 ULP & LRP	DIESEL 0.05%	DIESEL 0.005%	ILL. PAR.
GAUTENG PUMP PRICE AS FROM 07/08/2024	2,311.000	2,271.000	-	-	-
WHOLESALE PRICE AS FROM 07/08/2024	-	-	2,038.170	2,073.570	1,479.938
SINGLE NATIONAL MAXIMUM RETAIL PRICE AS FROM 07/08/2024	-	-	-	-	1,894.000
BASIC FUEL PRICE - 12/08/2024	1,153.939	1,119.476	1,165.672	1,170.632	1,158.458
PRESS RELEASE CONTRIBUTION TO BFP 07/08/2024 - 12/08/2024	1,200.570	1,160.570	1,204.630	1,240.030	1,226.128
UNIT OVER/(UNDER) RECOVERY - 12/08/2024	46.631	41.094	38.958	69.398	67.670
AVERAGE BASIC FUEL PRICE 02/08/2024 - 12/08/2024	1,138.697	1,103.275	1,157.682	1,166.009	1,153.292
AVERAGE UNIT OVER/(UNDER) RECOVERY 02/08/2024 - 12/08/2024	68.302	63.724	58.948	81.307	82.265

ANALYSIS MOVEMENT OF AVERAGE OVER/(UNDER) RECOVERY

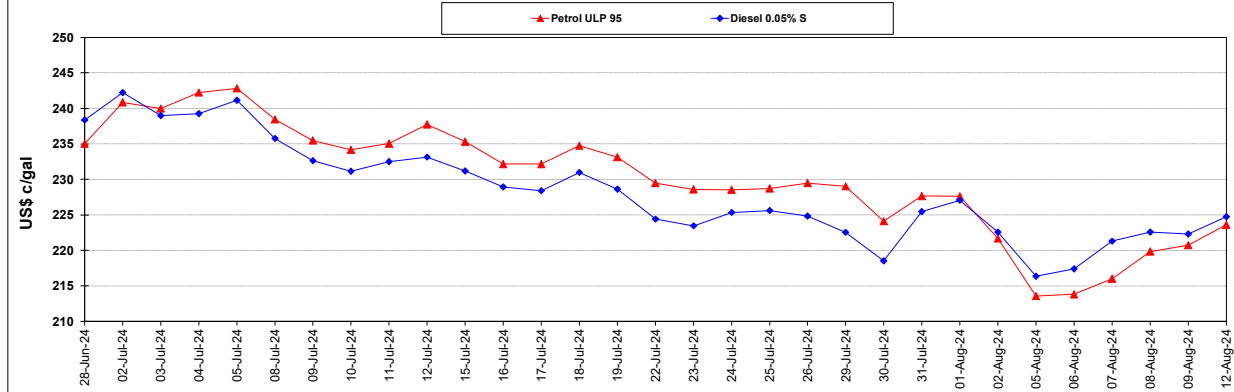
	PETROL 95	PETROL 93	DIESEL 0.05%	DIESEL 0.005%	ILL. PAR.
- MOVEMENT IN INTERNATIONAL PRODUCT PRICES	76.276	71.450	67.055	89.472	90.341
- MOVEMENT IN EXCHANGE RATE	(7.974)	(7.726)	(8.107)	(8.165)	(8.076)
AVERAGE UNIT OVER/(UNDER) RECOVERY 02/08/2024 - 12/08/2024	68.302	63.724	58.948	81.307	82.265

R/\$ EXCHANGE RATE - (R/\$18.2350 - 12/08/2024)

EXCHANGE RATE USED IN BASIC FUEL PRICE



INTERNATIONAL PRODUCT PRICES OF BASKET USED IN BASIC FUEL PRICE



BASIC FUEL PRICE IN SA CENTS PER LITRE

