

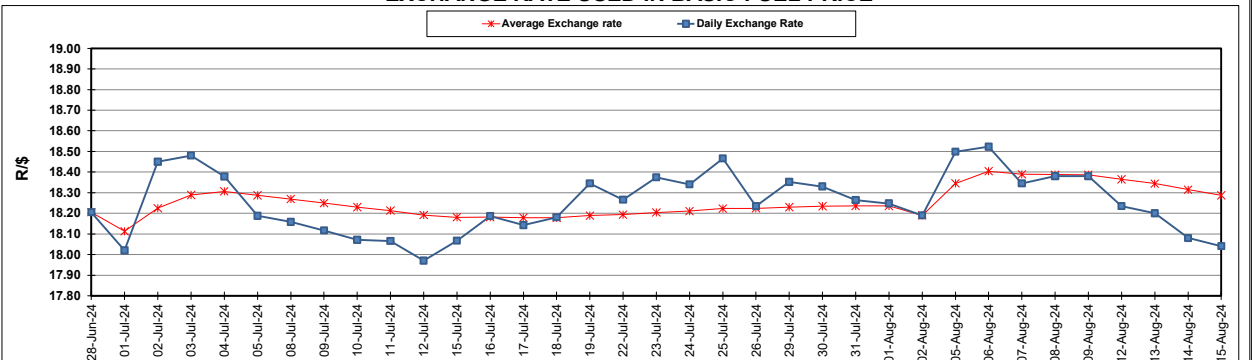
South African Cents per Litre (SA c/l)	PETROL 95 ULP	PETROL 93 ULP & LRP	DIESEL 0.05%	DIESEL 0.005%	ILL. PAR.
GAUTENG PUMP PRICE AS FROM 07/08/2024	2,311.000	2,271.000	-	-	-
WHOLESALE PRICE AS FROM 07/08/2024	-	-	2,038.170	2,073.570	1,479.938
SINGLE NATIONAL MAXIMUM RETAIL PRICE AS FROM 07/08/2024	-	-	-	-	1,894.000
BASIC FUEL PRICE - 15/08/2024	1,120.313	1,083.645	1,161.297	1,166.167	1,150.521
PRESS RELEASE CONTRIBUTION TO BFP 07/08/2024 - 15/08/2024	1,200.570	1,160.570	1,204.630	1,240.030	1,226.128
UNIT OVER/(UNDER) RECOVERY - 15/08/2024	80.257	76.925	43.333	73.863	75.607
AVERAGE BASIC FUEL PRICE 02/08/2024 - 15/08/2024	1,136.978	1,101.659	1,160.866	1,168.114	1,155.033
AVERAGE UNIT OVER/(UNDER) RECOVERY 02/08/2024 - 15/08/2024	68.093	63.412	52.165	77.016	77.696

ANALYSIS MOVEMENT OF AVERAGE OVER/(UNDER) RECOVERY

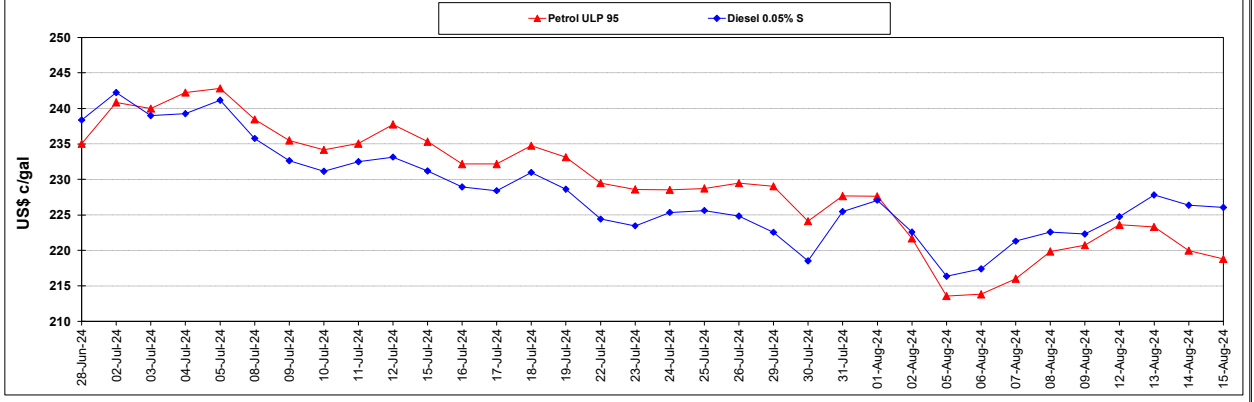
	PETROL 95	PETROL 93	DIESEL 0.05%	DIESEL 0.005%	ILL. PAR.
- MOVEMENT IN INTERNATIONAL PRODUCT PRICES	71.275	66.495	55.414	80.286	80.929
- MOVEMENT IN EXCHANGE RATE	(3.183)	(3.084)	(3.250)	(3.270)	(3.234)
AVERAGE UNIT OVER/(UNDER) RECOVERY 02/08/2024 - 15/08/2024	68.093	63.412	52.165	77.016	77.696

R/\$ EXCHANGE RATE - (R/\$18.0405 - 15/08/2024)

EXCHANGE RATE USED IN BASIC FUEL PRICE



INTERNATIONAL PRODUCT PRICES OF BASKET USED IN BASIC FUEL PRICE



BASIC FUEL PRICE IN SA CENTS PER LITRE

