

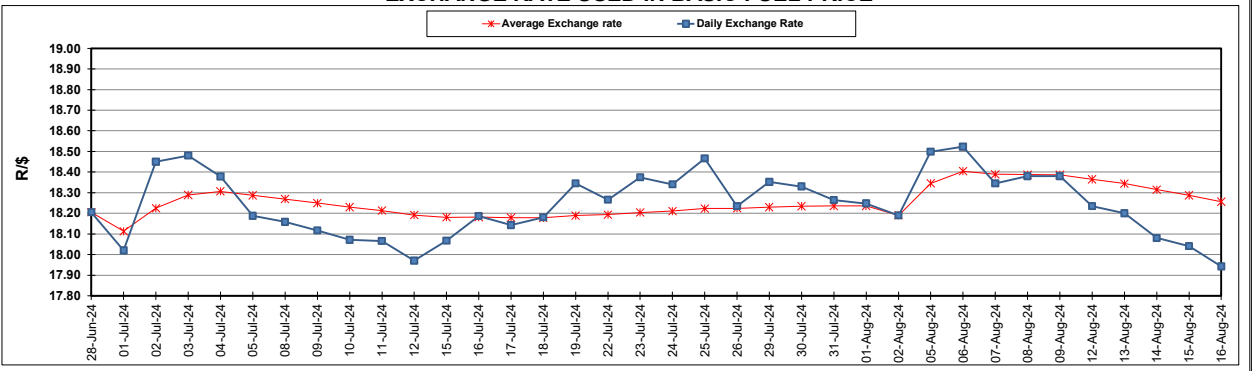
South African Cents per Litre (SA c/l)	PETROL 95 ULP	PETROL 93 ULP & LRP	DIESEL 0.05%	DIESEL 0.005%	ILL. PAR.
GAUTENG PUMP PRICE AS FROM 07/08/2024	2,311.000	2,271.000	-	-	-
WHOLESALE PRICE AS FROM 07/08/2024	-	-	2,038.170	2,073.570	1,479.938
SINGLE NATIONAL MAXIMUM RETAIL PRICE AS FROM 07/08/2024	-	-	-	-	1,894.000
BASIC FUEL PRICE - 16/08/2024	1,111.329	1,079.852	1,140.606	1,145.631	1,129.725
PRESS RELEASE CONTRIBUTION TO BFP 07/08/2024 - 16/08/2024	1,200.570	1,160.570	1,204.630	1,240.030	1,226.128
UNIT OVER/(UNDER) RECOVERY - 16/08/2024	89.241	80.718	64.024	94.399	96.403
AVERAGE BASIC FUEL PRICE 02/08/2024 - 16/08/2024	1,134.647	1,099.677	1,159.024	1,166.070	1,152.732
AVERAGE UNIT OVER/(UNDER) RECOVERY 02/08/2024 - 16/08/2024	70.015	64.985	53.243	78.596	79.397

ANALYSIS MOVEMENT OF AVERAGE OVER/(UNDER) RECOVERY

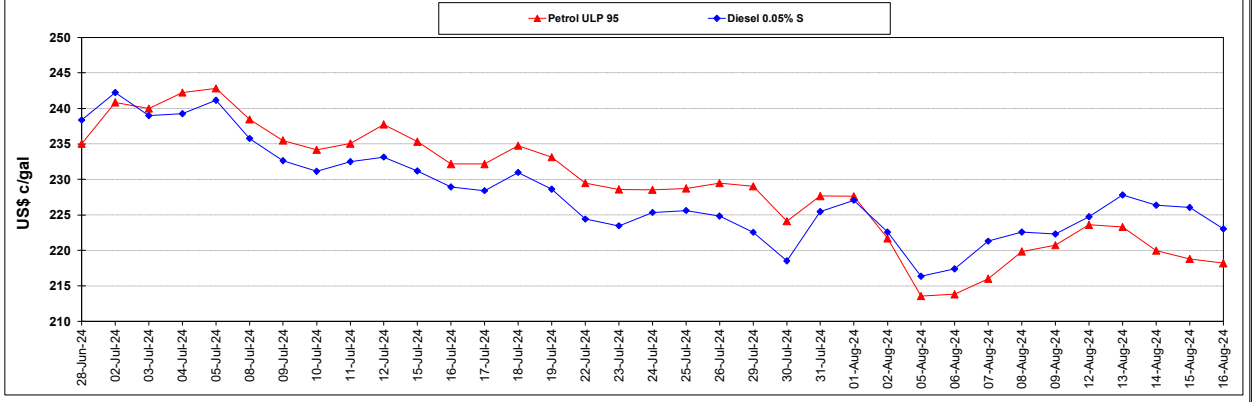
	PETROL 95	PETROL 93	DIESEL 0.05%	DIESEL 0.005%	ILL. PAR.
- MOVEMENT IN INTERNATIONAL PRODUCT PRICES	71.251	66.183	54.505	79.867	80.653
- MOVEMENT IN EXCHANGE RATE	(1.237)	(1.199)	(1.263)	(1.271)	(1.257)
AVERAGE UNIT OVER/(UNDER) RECOVERY 02/08/2024 - 16/08/2024	70.015	64.985	53.243	78.596	79.397

R/\$ EXCHANGE RATE - (R/\$17.9425 - 16/08/2024)

EXCHANGE RATE USED IN BASIC FUEL PRICE



INTERNATIONAL PRODUCT PRICES OF BASKET USED IN BASIC FUEL PRICE



BASIC FUEL PRICE IN SA CENTS PER LITRE

