

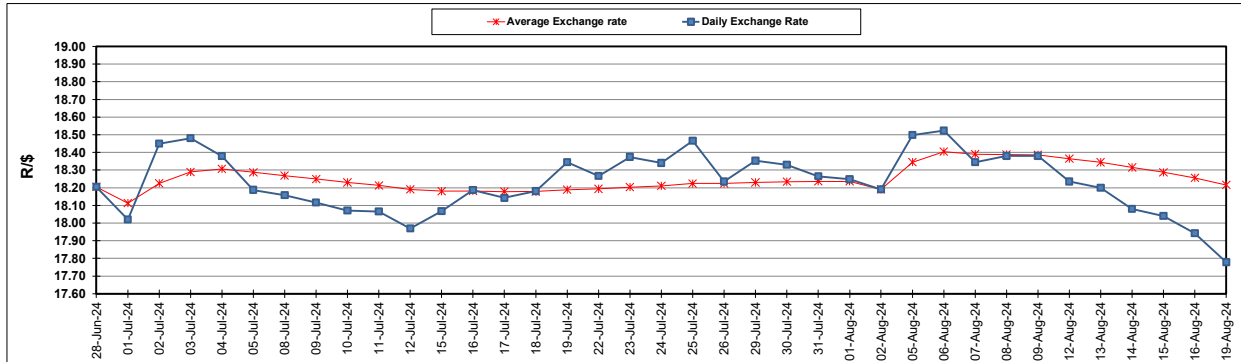
South African Cents per Litre (SA c/l)	PETROL 95 ULP	PETROL 93 ULP & LRP	DIESEL 0.05%	DIESEL 0.005%	ILL. PAR.
GAUTENG PUMP PRICE AS FROM 07/08/2024	2,311.000	2,271.000	-	-	-
WHOLESALE PRICE AS FROM 07/08/2024	-	-	2,038.170	2,073.570	1,479.938
SINGLE NATIONAL MAXIMUM RETAIL PRICE AS FROM 07/08/2024	-	-	-	-	1,894.000
BASIC FUEL PRICE - 19/08/2024	1,088.088	1,056.895	1,110.571	1,115.732	1,101.840
PRESS RELEASE CONTRIBUTION TO BFP 07/08/2024 - 19/08/2024	1,200.570	1,160.570	1,204.630	1,240.030	1,226.128
UNIT OVER/(UNDER) RECOVERY - 19/08/2024	112.482	103.675	94.059	124.298	124.288
AVERAGE BASIC FUEL PRICE 02/08/2024 - 19/08/2024	1,130.767	1,096.112	1,154.986	1,161.875	1,148.491
AVERAGE UNIT OVER/(UNDER) RECOVERY 02/08/2024 - 19/08/2024	73.554	68.209	56.645	82.405	83.138

### ANALYSIS MOVEMENT OF AVERAGE OVER/(UNDER) RECOVERY

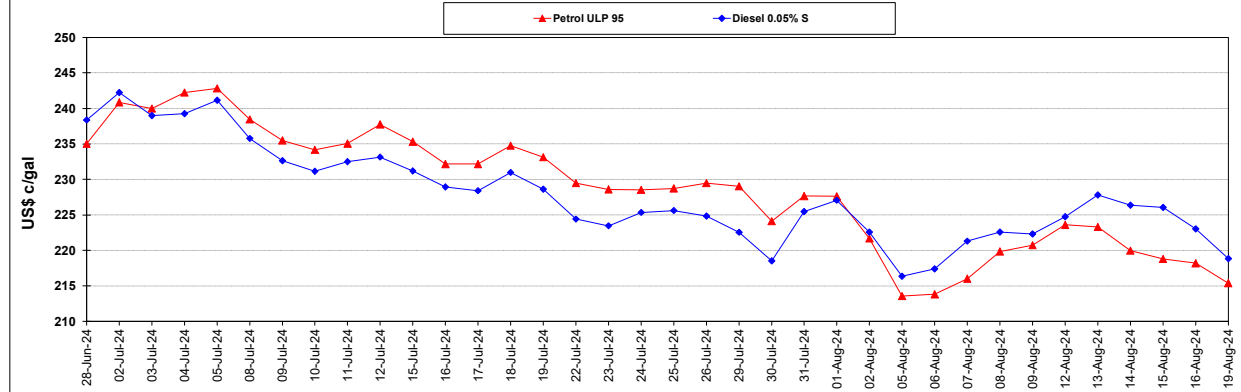
	PETROL 95	PETROL 93	DIESEL 0.05%	DIESEL 0.005%	ILL. PAR.
- MOVEMENT IN INTERNATIONAL PRODUCT PRICES	72.324	67.017	55.389	81.142	81.889
- MOVEMENT IN EXCHANGE RATE	1.229	1.191	1.255	1.263	1.248
AVERAGE UNIT OVER/(UNDER) RECOVERY 02/08/2024 - 19/08/2024	73.554	68.209	56.645	82.405	83.138

R/\$ EXCHANGE RATE - (R/\$17.7790 - 19/08/2024)

### EXCHANGE RATE USED IN BASIC FUEL PRICE



### INTERNATIONAL PRODUCT PRICES OF BASKET USED IN BASIC FUEL PRICE



### BASIC FUEL PRICE IN SA CENTS PER LITRE

