

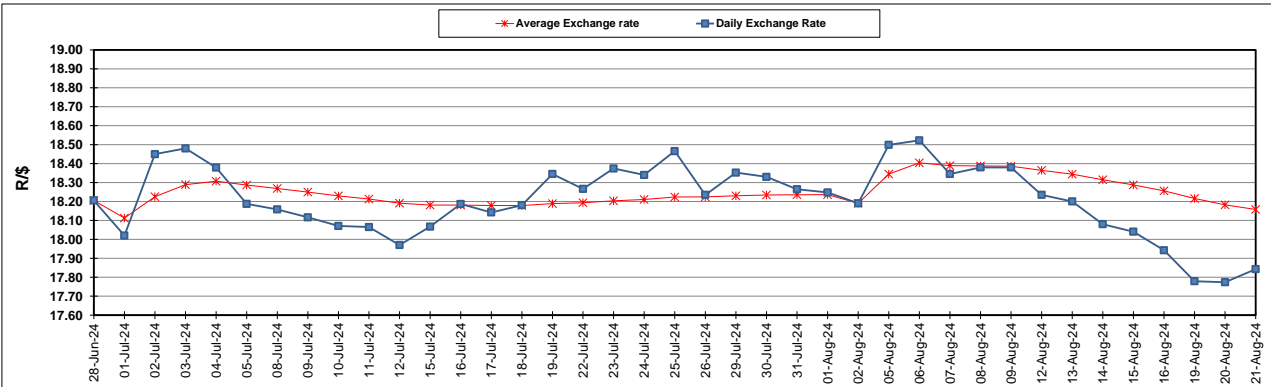
South African Cents per Litre (SA c/l)	PETROL 95 ULP	PETROL 93 ULP & LRP	DIESEL 0.05%	DIESEL 0.005%	ILL. PAR.
GAUTENG PUMP PRICE AS FROM 07/08/2024	2,311.000	2,271.000	-	-	-
WHOLESALE PRICE AS FROM 07/08/2024	-	-	2,038.170	2,073.570	1,479.938
SINGLE NATIONAL MAXIMUM RETAIL PRICE AS FROM 07/08/2024	-	-	-	-	1,894.000
BASIC FUEL PRICE - 21/08/2024	1,065.604	1,034.282	1,093.944	1,102.568	1,090.520
PRESS RELEASE CONTRIBUTION TO BFP 07/08/2024 - 21/08/2024	1,200.570	1,160.570	1,204.630	1,240.030	1,226.128
UNIT OVER/(UNDER) RECOVERY - 21/08/2024	134.966	126.288	110.686	137.462	135.608
AVERAGE BASIC FUEL PRICE 02/08/2024 - 21/08/2024	1,121.342	1,087.173	1,145.248	1,152.218	1,139.075
AVERAGE UNIT OVER/(UNDER) RECOVERY 02/08/2024 - 21/08/2024	82.443	76.612	65.383	91.455	91.769

ANALYSIS MOVEMENT OF AVERAGE OVER/(UNDER) RECOVERY

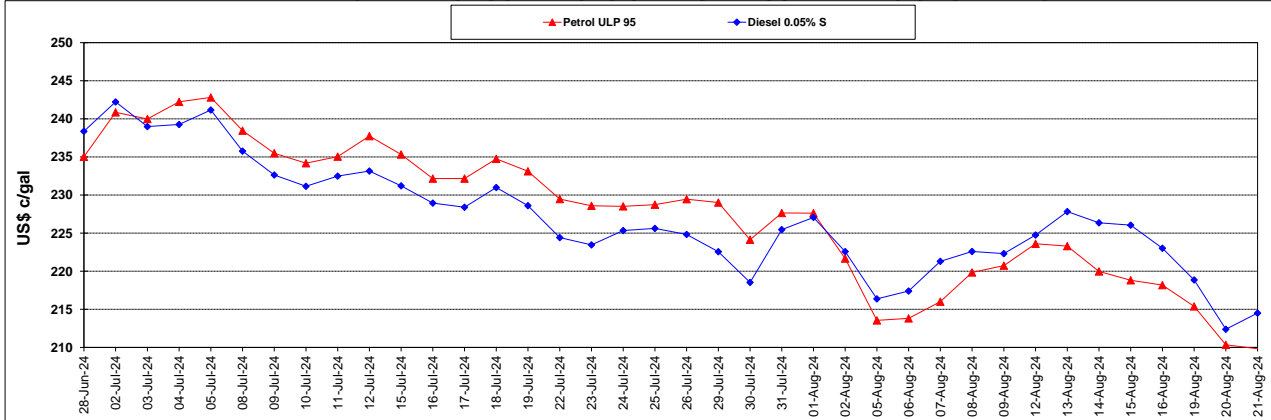
	PETROL 95	PETROL 93	DIESEL 0.05%	DIESEL 0.005%	ILL. PAR.
- MOVEMENT IN INTERNATIONAL PRODUCT PRICES	77.619	71.935	60.456	86.499	86.868
- MOVEMENT IN EXCHANGE RATE	4.823	4.676	4.926	4.956	4.899
AVERAGE UNIT OVER/(UNDER) RECOVERY 02/08/2024 - 21/08/2024	82.443	76.612	65.383	91.455	91.769

R/\$ EXCHANGE RATE - (R/\$17.8430 - 21/08/2024)

EXCHANGE RATE USED IN BASIC FUEL PRICE



INTERNATIONAL PRODUCT PRICES OF BASKET USED IN BASIC FUEL PRICE



BASIC FUEL PRICE IN SA CENTS PER LITRE

