

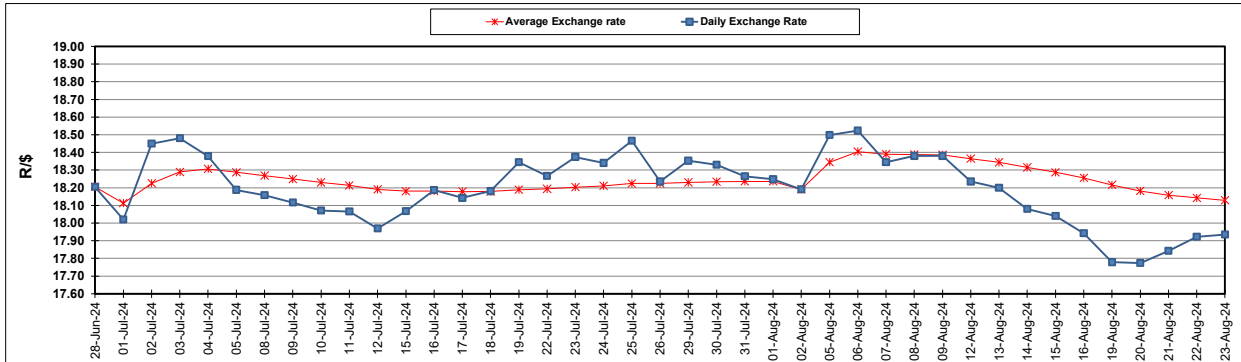
South African Cents per Litre (SA c/l)	PETROL 95 ULP	PETROL 93 ULP & LRP	DIESEL 0.05%	DIESEL 0.005%	ILL. PAR.
GAUTENG PUMP PRICE AS FROM 07/08/2024	2,311.000	2,271.000	-	-	-
WHOLESALE PRICE AS FROM 07/08/2024	-	-	2,038.170	2,073.570	1,479.938
SINGLE NATIONAL MAXIMUM RETAIL PRICE AS FROM 07/08/2024	-	-	-	-	1,894.000
BASIC FUEL PRICE - 23/08/2024	1,082.848	1,050.837	1,103.813	1,113.571	1,104.137
PRESS RELEASE CONTRIBUTION TO BFP 07/08/2024 - 23/08/2024	1,200.570	1,160.570	1,204.630	1,240.030	1,226.128
UNIT OVER/(UNDER) RECOVERY - 23/08/2024	117.722	109.733	100.817	126.459	121.991
AVERAGE BASIC FUEL PRICE 02/08/2024 - 23/08/2024	1,115.327	1,081.585	1,139.052	1,146.347	1,133.547
AVERAGE UNIT OVER/(UNDER) RECOVERY 02/08/2024 - 23/08/2024	88.056	81.798	70.828	96.871	96.706

ANALYSIS MOVEMENT OF AVERAGE OVER/(UNDER) RECOVERY

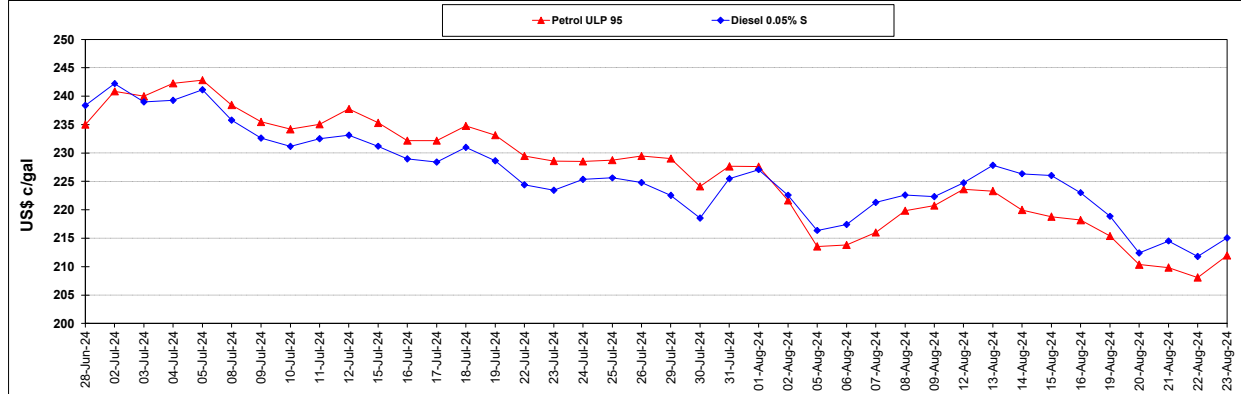
	PETROL 95	PETROL 93	DIESEL 0.05%	DIESEL 0.005%	ILL. PAR.
- MOVEMENT IN INTERNATIONAL PRODUCT PRICES	81.492	75.432	64.124	90.124	90.035
- MOVEMENT IN EXCHANGE RATE	6.564	6.366	6.704	6.747	6.671
AVERAGE UNIT OVER/(UNDER) RECOVERY 02/08/2024 - 23/08/2024	88.056	81.798	70.828	96.871	96.706

R/\$ EXCHANGE RATE - (R/\$17.9353 - 23/08/2024)

EXCHANGE RATE USED IN BASIC FUEL PRICE



INTERNATIONAL PRODUCT PRICES OF BASKET USED IN BASIC FUEL PRICE



BASIC FUEL PRICE IN SA CENTS PER LITRE

