

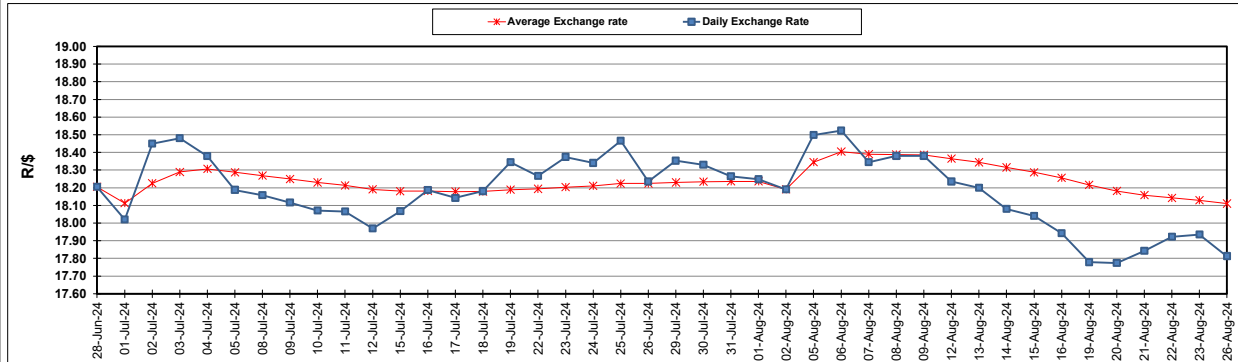
| South African Cents per Litre (SA c/l) | PETROL 95 ULP | PETROL 93 ULP & LRP | DIESEL 0.05% | DIESEL 0.005% | ILL. PAR. |
|--|---------------|---------------------|--------------|---------------|-----------|
| GAUTENG PUMP PRICE AS FROM 07/08/2024 | 2,311.000 | 2,271.000 | - | - | - |
| WHOLESALE PRICE AS FROM 07/08/2024 | - | - | 2,038.170 | 2,073.570 | 1,479.938 |
| SINGLE NATIONAL MAXIMUM RETAIL PRICE AS FROM 07/08/2024 | - | - | - | - | 1,894.000 |
| BASIC FUEL PRICE - 26/08/2024 | 1,085.597 | 1,059.442 | 1,107.624 | 1,116.180 | 1,108.323 |
| PRESS RELEASE CONTRIBUTION TO BFP 07/08/2024 - 26/08/2024 | 1,200.570 | 1,160.570 | 1,204.630 | 1,240.030 | 1,226.128 |
| UNIT OVER/(UNDER) RECOVERY - 26/08/2024 | 114.973 | 101.128 | 97.006 | 123.850 | 117.805 |
| AVERAGE BASIC FUEL PRICE 02/08/2024 - 26/08/2024 | 1,113.578 | 1,080.283 | 1,137.203 | 1,144.572 | 1,132.064 |
| AVERAGE UNIT OVER/(UNDER) RECOVERY 02/08/2024 - 26/08/2024 | 89.639 | 82.934 | 72.368 | 98.458 | 97.946 |

ANALYSIS MOVEMENT OF AVERAGE OVER/(UNDER) RECOVERY

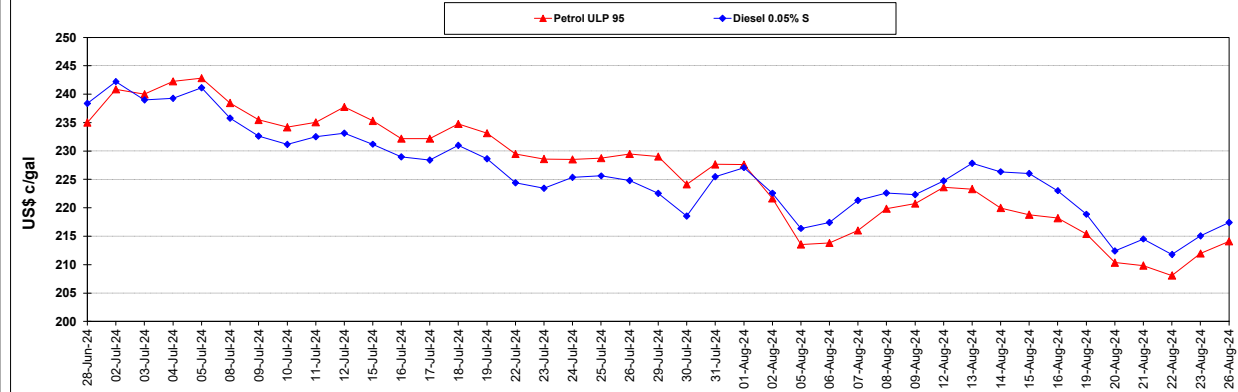
| | PETROL 95 | PETROL 93 | DIESEL 0.05% | DIESEL 0.005% | ILL. PAR. |
|--|-----------|-----------|--------------|---------------|-----------|
| - MOVEMENT IN INTERNATIONAL PRODUCT PRICES | 81.928 | 75.454 | 64.494 | 90.533 | 90.107 |
| - MOVEMENT IN EXCHANGE RATE | 7.711 | 7.480 | 7.874 | 7.925 | 7.839 |
| AVERAGE UNIT OVER/(UNDER) RECOVERY 02/08/2024 - 26/08/2024 | 89.639 | 82.934 | 72.368 | 98.458 | 97.946 |

R/\$ EXCHANGE RATE - (R/\$17.8125 - 26/08/2024)

EXCHANGE RATE USED IN BASIC FUEL PRICE



INTERNATIONAL PRODUCT PRICES OF BASKET USED IN BASIC FUEL PRICE



BASIC FUEL PRICE IN SA CENTS PER LITRE

