

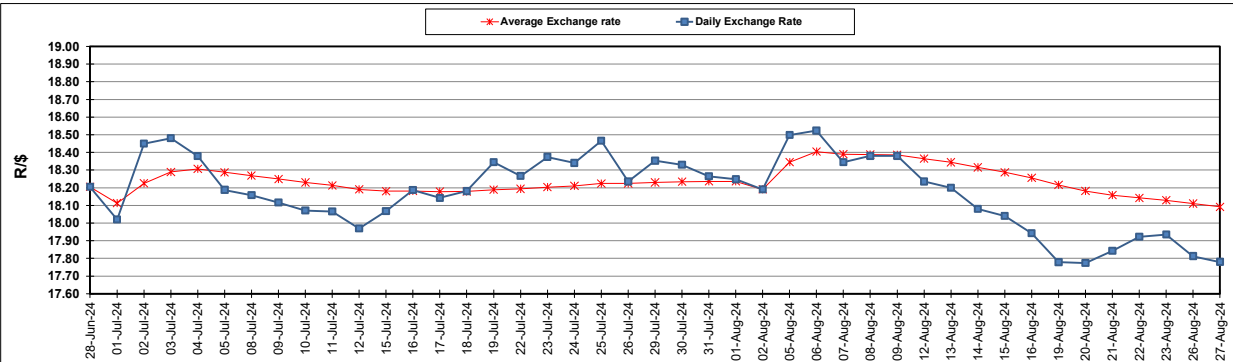
South African Cents per Litre (SA c/l)	PETROL 95 ULP	PETROL 93 ULP & LRP	DIESEL 0.05%	DIESEL 0.005%	ILL. PAR.
GAUTENG PUMP PRICE AS FROM 07/08/2024	2,311.000	2,271.000	-	-	-
WHOLESALE PRICE AS FROM 07/08/2024	-	-	2,038.170	2,073.570	1,479.938
SINGLE NATIONAL MAXIMUM RETAIL PRICE AS FROM 07/08/2024	-	-	-	-	1,894.000
BASIC FUEL PRICE - 27/08/2024	1,083.186	1,057.081	1,110.045	1,118.892	1,110.960
PRESS RELEASE CONTRIBUTION TO BFP 07/08/2024 - 27/08/2024	1,200.570	1,160.570	1,204.630	1,240.030	1,226.128
UNIT OVER/(UNDER) RECOVERY - 27/08/2024	117.384	103.489	94.585	121.138	115.168
AVERAGE BASIC FUEL PRICE 02/08/2024 - 27/08/2024	1,111.889	1,078.994	1,135.694	1,143.146	1,130.891
AVERAGE UNIT OVER/(UNDER) RECOVERY 02/08/2024 - 27/08/2024	91.181	84.076	73.603	99.717	98.904

ANALYSIS MOVEMENT OF AVERAGE OVER/(UNDER) RECOVERY

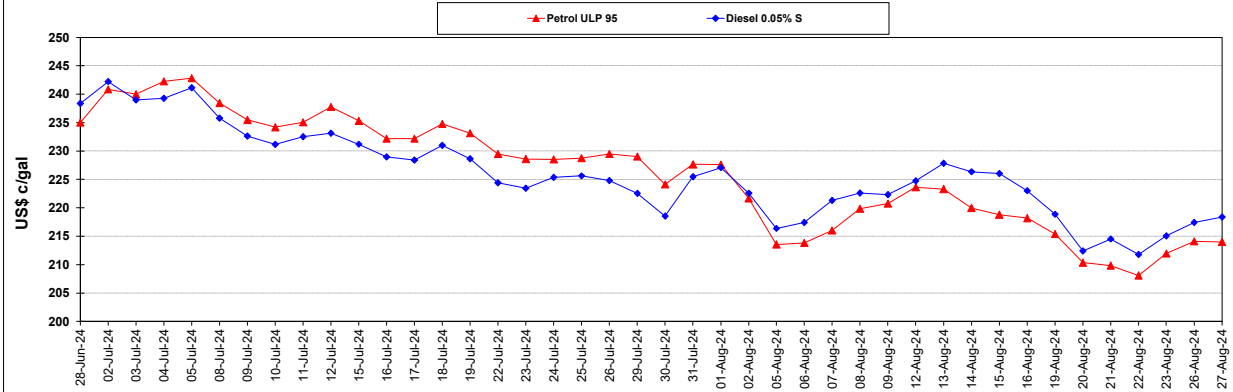
	PETROL 95	PETROL 93	DIESEL 0.05%	DIESEL 0.005%	ILL. PAR.
- MOVEMENT IN INTERNATIONAL PRODUCT PRICES	82.350	75.506	64.583	90.637	89.922
- MOVEMENT IN EXCHANGE RATE	8.831	8.570	9.020	9.080	8.982
AVERAGE UNIT OVER/(UNDER) RECOVERY 02/08/2024 - 27/08/2024	91.181	84.076	73.603	99.717	98.904

R/\$ EXCHANGE RATE - (R/\$17.7800 - 27/08/2024)

EXCHANGE RATE USED IN BASIC FUEL PRICE



INTERNATIONAL PRODUCT PRICES OF BASKET USED IN BASIC FUEL PRICE



BASIC FUEL PRICE IN SA CENTS PER LITRE

