

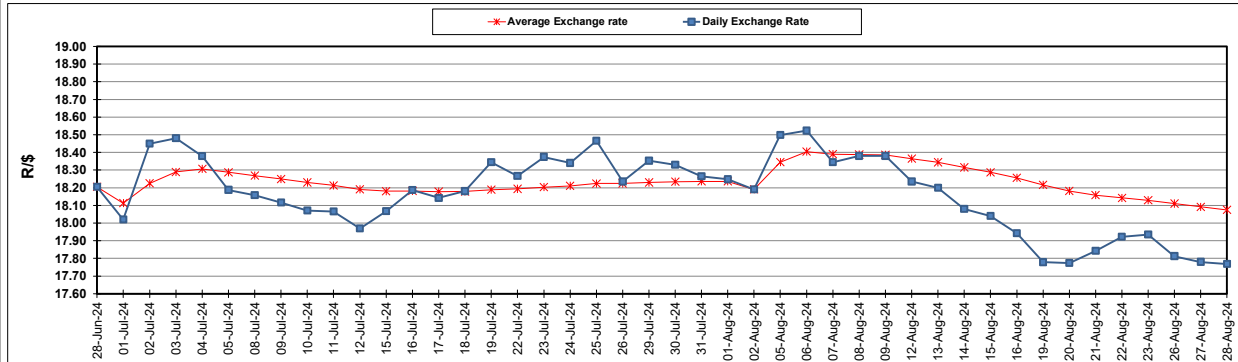
South African Cents per Litre (SA c/l)	PETROL 95 ULP	PETROL 93 ULP & LRP	DIESEL 0.05%	DIESEL 0.005%	ILL. PAR.
GAUTENG PUMP PRICE AS FROM 07/08/2024	2,311.000	2,271.000	-	-	-
WHOLESALE PRICE AS FROM 07/08/2024	-	-	2,038.170	2,073.570	1,479.938
SINGLE NATIONAL MAXIMUM RETAIL PRICE AS FROM 07/08/2024	-	-	-	-	1,894.000
BASIC FUEL PRICE - 28/08/2024	1,059.727	1,033.260	1,077.893	1,086.535	1,084.106
PRESS RELEASE CONTRIBUTION TO BFP 07/08/2024 - 28/08/2024	1,200.570	1,160.570	1,204.630	1,240.030	1,226.128
UNIT OVER/(UNDER) RECOVERY - 28/08/2024	140.843	127.310	126.737	153.495	142.022
AVERAGE BASIC FUEL PRICE 02/08/2024 - 28/08/2024	1,109.144	1,076.587	1,132.652	1,140.166	1,128.429
AVERAGE UNIT OVER/(UNDER) RECOVERY 02/08/2024 - 28/08/2024	93.794	86.351	76.399	102.548	101.173

ANALYSIS MOVEMENT OF AVERAGE OVER/(UNDER) RECOVERY

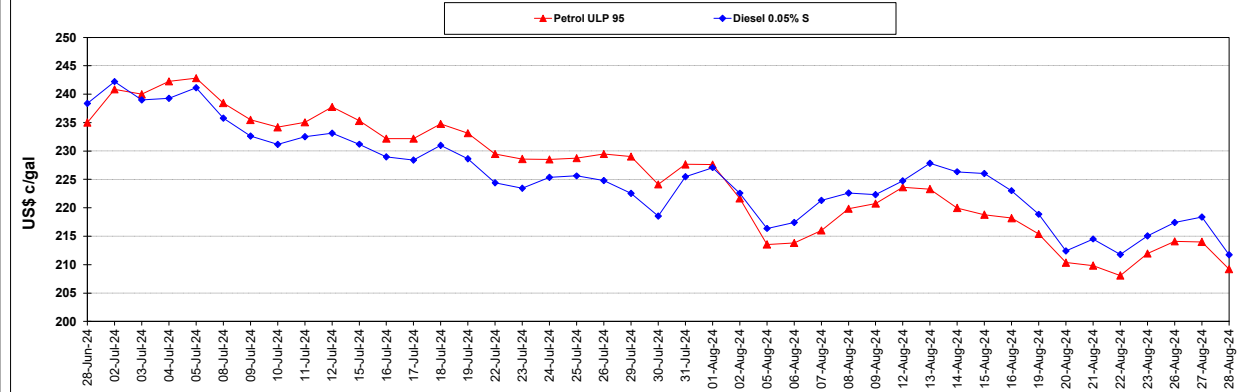
	PETROL 95	PETROL 93	DIESEL 0.05%	DIESEL 0.005%	ILL. PAR.
- MOVEMENT IN INTERNATIONAL PRODUCT PRICES	83.927	76.774	66.323	92.405	91.134
- MOVEMENT IN EXCHANGE RATE	9.867	9.577	10.076	10.143	10.039
AVERAGE UNIT OVER/(UNDER) RECOVERY 02/08/2024 - 28/08/2024	93.794	86.351	76.399	102.548	101.173

R/\$ EXCHANGE RATE - (R/\$17.7685 - 28/08/2024)

EXCHANGE RATE USED IN BASIC FUEL PRICE



INTERNATIONAL PRODUCT PRICES OF BASKET USED IN BASIC FUEL PRICE



BASIC FUEL PRICE IN SA CENTS PER LITRE

