

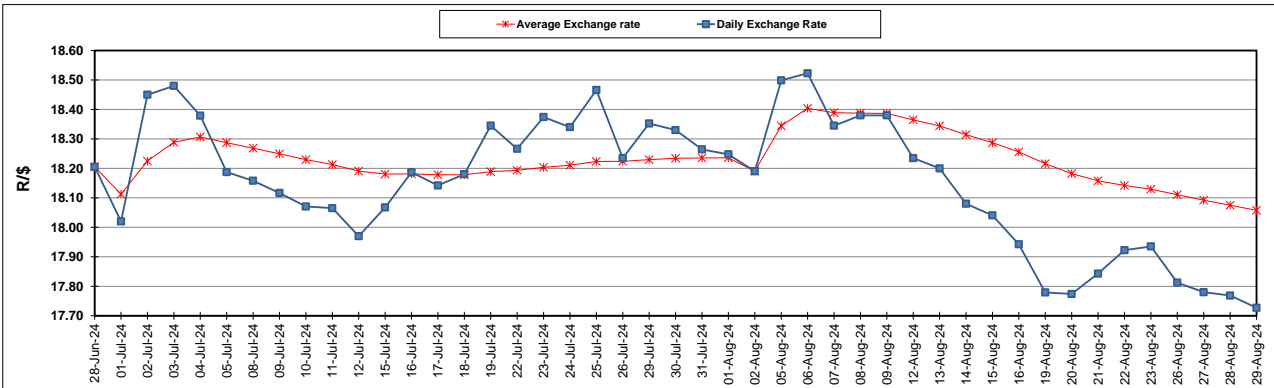
South African Cents per Litre (SA c/l)	PETROL 95 ULP	PETROL 93 ULP & LRP	DIESEL 0.05%	DIESEL 0.005%	ILL. PAR.
GAUTENG PUMP PRICE AS FROM 07/08/2024	2,311.000	2,271.000	-	-	-
WHOLESALE PRICE AS FROM 07/08/2024	-	-	2,038.170	2,073.570	1,479.938
SINGLE NATIONAL MAXIMUM RETAIL PRICE AS FROM 07/08/2024	-	-	-	-	1,894.000
BASIC FUEL PRICE - 29/08/2024	1,052.563	1,021.229	1,080.563	1,092.807	1,088.787
PRESS RELEASE CONTRIBUTION TO BFP 07/08/2024 - 29/08/2024	1,200.570	1,160.570	1,204.630	1,240.030	1,226.128
UNIT OVER/(UNDER) RECOVERY - 29/08/2024	148.007	139.341	124.067	147.223	137.341
AVERAGE BASIC FUEL PRICE 02/08/2024 - 29/08/2024	1,106.315	1,073.819	1,130.048	1,137.798	1,126.447
AVERAGE UNIT OVER/(UNDER) RECOVERY 02/08/2024 - 29/08/2024	96.505	89.001	78.782	104.782	102.981

ANALYSIS MOVEMENT OF AVERAGE OVER/(UNDER) RECOVERY

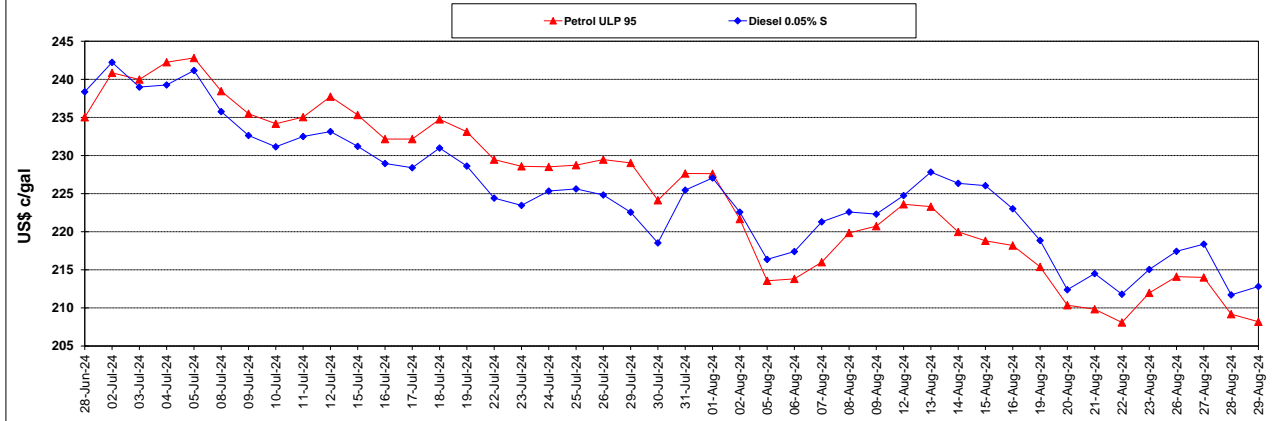
	PETROL 95	PETROL 93	DIESEL 0.05%	DIESEL 0.005%	ILL. PAR.
- MOVEMENT IN INTERNATIONAL PRODUCT PRICES	85.588	78.404	67.630	93.554	91.865
- MOVEMENT IN EXCHANGE RATE	10.917	10.597	11.152	11.228	11.116
AVERAGE UNIT OVER/(UNDER) RECOVERY 02/08/2024 - 29/08/2024	96.505	89.001	78.782	104.782	102.981

R/\$ EXCHANGE RATE - (R/\$17.7270 - 29/08/2024)

EXCHANGE RATE USED IN BASIC FUEL PRICE



INTERNATIONAL PRODUCT PRICES OF BASKET USED IN BASIC FUEL PRICE



BASIC FUEL PRICE IN SA CENTS PER LITRE

