

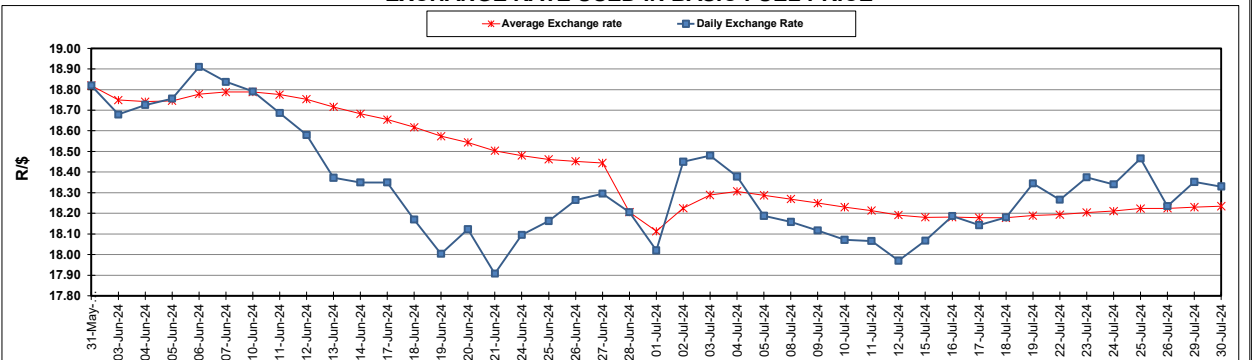
| South African Cents per Litre (SA c/l)                     | PETROL 95<br>ULP | PETROL 93<br>ULP & LRP | DIESEL<br>0.05% | DIESEL<br>0.005% | ILL. PAR. |
|--|------------------|------------------------|-----------------|------------------|-----------|
| GAUTENG PUMP PRICE AS FROM 04/07/2024                      | 2,326.000        | 2,286.000              | -               | -                | -         |
| WHOLESALE PRICE AS FROM 04/07/2024                         | -                | -                      | 2,066.170       | 2,090.570        | 1,501.938 |
| SINGLE NATIONAL MAXIMUM RETAIL PRICE AS FROM 04/07/2024    | -                | -                      | -               | -                | 1,923.000 |
| BASIC FUEL PRICE - 30/07/2024                              | 1,164.045        | 1,132.332              | 1,143.111       | 1,177.810        | 1,165.285 |
| PRESS RELEASE CONTRIBUTION TO BFP 04/07/2024 - 30/07/2024  | 1,215.570        | 1,175.570              | 1,232.630       | 1,257.030        | 1,248.128 |
| UNIT OVER/(UNDER) RECOVERY - 30/07/2024                    | 51.525           | 43.238                 | 89.519          | 79.220           | 82.843    |
| AVERAGE BASIC FUEL PRICE 28/06/2024 - 30/07/2024           | 1,219.299        | 1,185.076              | 1,212.451       | 1,248.505        | 1,232.561 |
| AVERAGE UNIT OVER/(UNDER) RECOVERY 28/06/2024 - 30/07/2024 | 12.727           | 7.993                  | 24.701          | 12.003           | 18.697    |

### ANALYSIS MOVEMENT OF AVERAGE OVER/(UNDER) RECOVERY

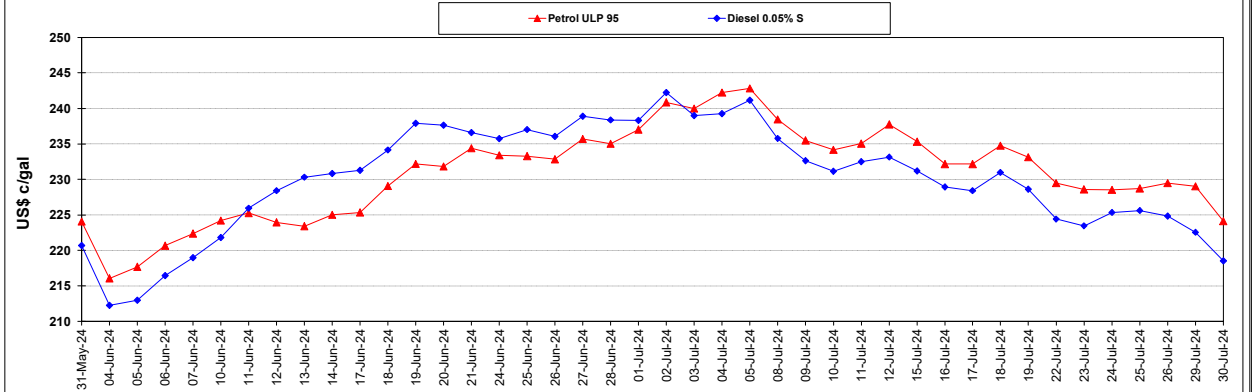
|  | PETROL 95 | PETROL 93 | DIESEL 0.05% | DIESEL 0.005% | ILL. PAR. |
|--|-----------|-----------|--------------|---------------|-----------|
| - MOVEMENT IN INTERNATIONAL PRODUCT PRICES                 | (1.289)   | (5.629)   | 10.764       | (2.348)       | 4.529     |
| - MOVEMENT IN EXCHANGE RATE                                | 14.016    | 13.622    | 13.937       | 14.351        | 14.168    |
| AVERAGE UNIT OVER/(UNDER) RECOVERY 28/06/2024 - 30/07/2024 | 12.727    | 7.993     | 24.701       | 12.003        | 18.697    |

**R/\$ EXCHANGE RATE - (R/\$18.3300 - 30/07/2024)**

### EXCHANGE RATE USED IN BASIC FUEL PRICE



### INTERNATIONAL PRODUCT PRICES OF BASKET USED IN BASIC FUEL PRICE



### BASIC FUEL PRICE IN SA CENTS PER LITRE

