

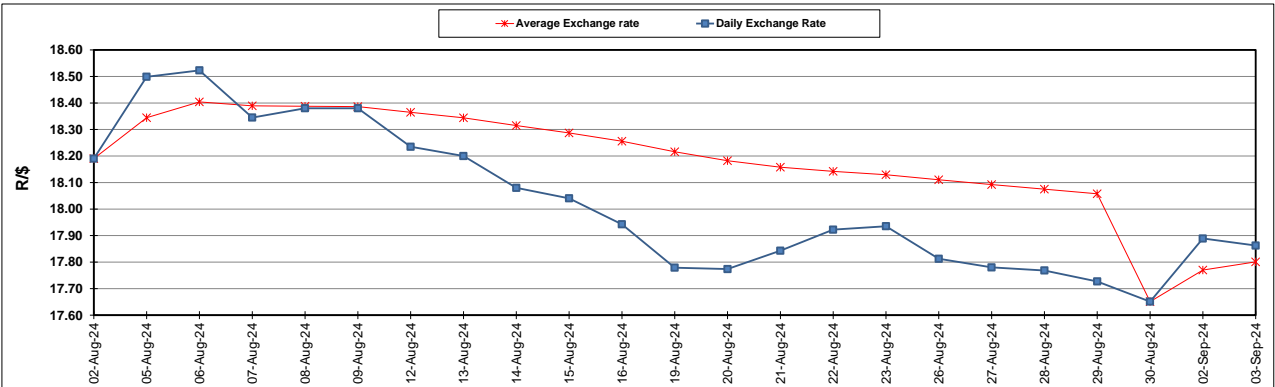
South African Cents per Litre (SA c/l)	PETROL 95 ULP	PETROL 93 ULP & LRP	DIESEL 0.05%	DIESEL 0.005%	ILL. PAR.
GAUTENG PUMP PRICE AS FROM 04/09/2024	2,219.000	2,179.000	-	-	-
WHOLESALE PRICE AS FROM 04/09/2024	-	-	1,959.170	1,968.570	1,376.938
SINGLE NATIONAL MAXIMUM RETAIL PRICE AS FROM 04/09/2024	-	-	-	-	1,756.000
BASIC FUEL PRICE - 03/09/2024	1,039.951	1,008.377	1,073.235	1,090.286	1,081.170
PRESS RELEASE CONTRIBUTION TO BFP 30/08/2024 - 03/09/2024	1,200.570	1,160.570	1,204.630	1,240.030	1,226.128
UNIT OVER/(UNDER) RECOVERY - 03/09/2024	160.619	152.193	131.395	149.744	144.958
AVERAGE BASIC FUEL PRICE 30/08/2024 - 03/09/2024	1,048.318	1,016.859	1,081.827	1,097.830	1,089.510
AVERAGE UNIT OVER/(UNDER) RECOVERY 30/08/2024 - 03/09/2024	152.252	143.711	122.803	142.200	136.618

ANALYSIS MOVEMENT OF AVERAGE OVER/(UNDER) RECOVERY

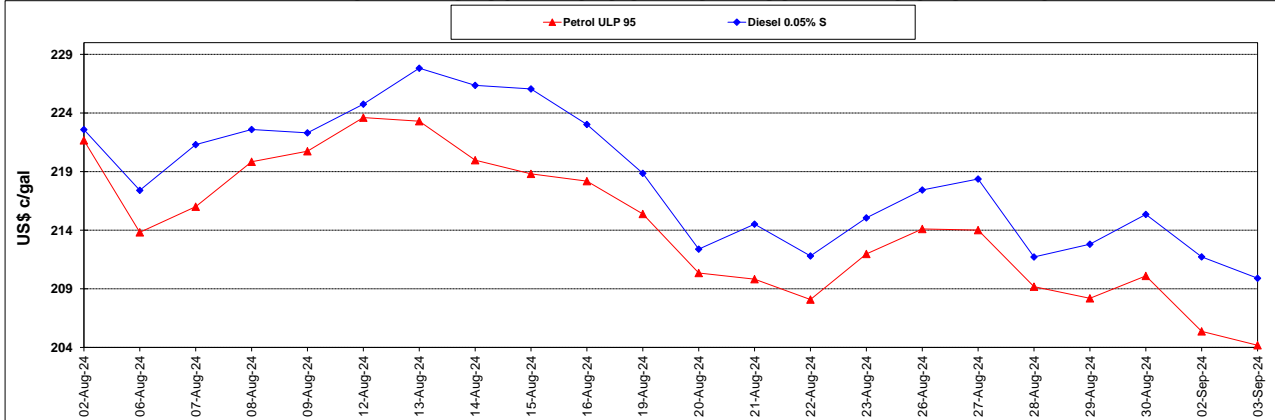
	PETROL 95	PETROL 93	DIESEL 0.05%	DIESEL 0.005%	ILL. PAR.
- MOVEMENT IN INTERNATIONAL PRODUCT PRICES	137.117	129.030	107.184	126.350	120.888
- MOVEMENT IN EXCHANGE RATE	15.135	14.681	15.619	15.850	15.730
AVERAGE UNIT OVER/(UNDER) RECOVERY 30/08/2024 - 03/09/2024	152.252	143.711	122.803	142.200	136.618

R/\$ EXCHANGE RATE - (R/\$17.8625 - 03/09/2024)

EXCHANGE RATE USED IN BASIC FUEL PRICE



INTERNATIONAL PRODUCT PRICES OF BASKET USED IN BASIC FUEL PRICE



BASIC FUEL PRICE IN SA CENTS PER LITRE

