

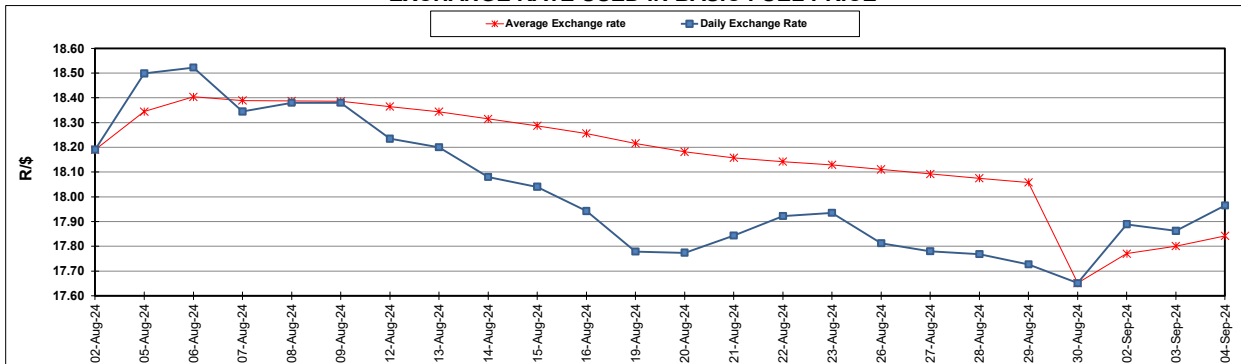
South African Cents per Litre (SA c/l)	PETROL 95 ULP	PETROL 93 ULP & LRP	DIESEL 0.05%	DIESEL 0.005%	ILL. PAR.
GAUTENG PUMP PRICE AS FROM 04/09/2024	2,219.000	2,179.000	-	-	-
WHOLESALE PRICE AS FROM 04/09/2024	-	-	1,959.170	1,968.570	1,376.938
SINGLE NATIONAL MAXIMUM RETAIL PRICE AS FROM 04/09/2024	-	-	-	-	1,756.000
BASIC FUEL PRICE - 04/09/2024	1,002.095	970.357	1,047.533	1,063.446	1,059.882
PRESS RELEASE CONTRIBUTION TO BFP 04/09/2024 - 04/09/2024	1,103.270	1,063.270	1,125.630	1,135.030	1,123.128
UNIT OVER/(UNDER) RECOVERY - 04/09/2024	101.175	92.913	78.097	71.584	63.246
AVERAGE BASIC FUEL PRICE 30/08/2024 - 04/09/2024	1,036.763	1,005.234	1,073.254	1,089.234	1,082.103
AVERAGE UNIT OVER/(UNDER) RECOVERY 30/08/2024 - 04/09/2024	139.482	131.011	111.626	124.546	118.275

ANALYSIS MOVEMENT OF AVERAGE OVER/(UNDER) RECOVERY

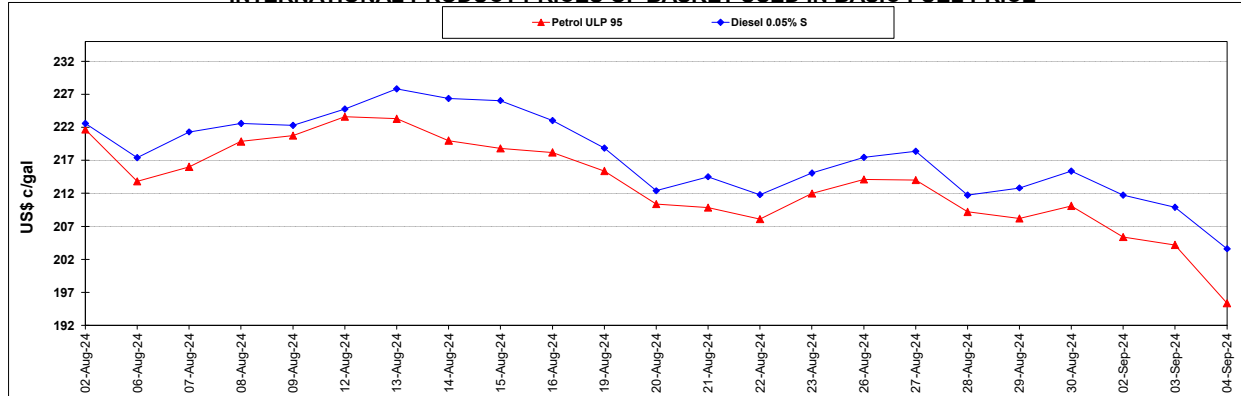
	PETROL 95	PETROL 93	DIESEL 0.05%	DIESEL 0.005%	ILL. PAR.
- MOVEMENT IN INTERNATIONAL PRODUCT PRICES	126.936	118.847	98.639	111.365	105.181
- MOVEMENT IN EXCHANGE RATE	12.546	12.164	12.987	13.181	13.094
AVERAGE UNIT OVER/(UNDER) RECOVERY 30/08/2024 - 04/09/2024	139.482	131.011	111.626	124.546	118.275

R/\$ EXCHANGE RATE - (R/\$17.9650 - 04/09/2024)

EXCHANGE RATE USED IN BASIC FUEL PRICE



INTERNATIONAL PRODUCT PRICES OF BASKET USED IN BASIC FUEL PRICE



BASIC FUEL PRICE IN SA CENTS PER LITRE

