

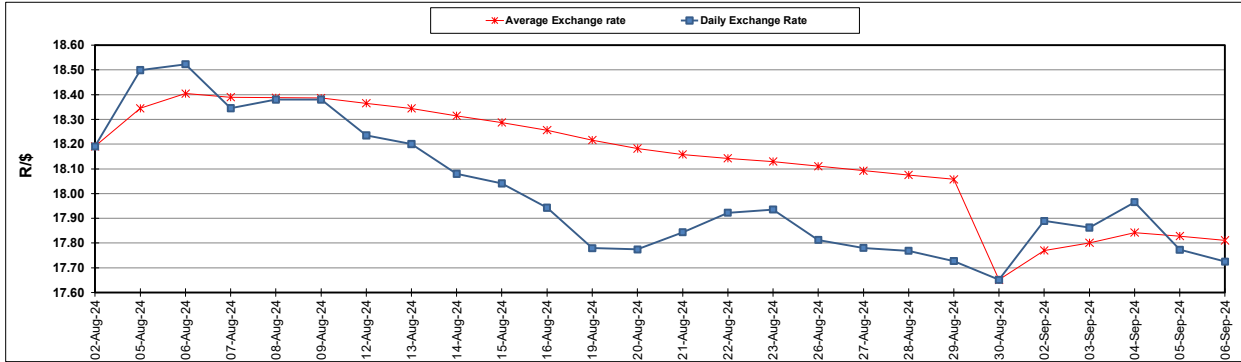
South African Cents per Litre (SA c/l)	PETROL 95 ULP	PETROL 93 ULP & LRP	DIESEL 0.05%	DIESEL 0.005%	ILL. PAR.
GAUTENG PUMP PRICE AS FROM 04/09/2024	2,219.000	2,179.000	-	-	-
WHOLESALE PRICE AS FROM 04/09/2024	-	-	1,959.170	1,968.570	1,376.938
SINGLE NATIONAL MAXIMUM RETAIL PRICE AS FROM 04/09/2024	-	-	-	-	1,756.000
BASIC FUEL PRICE - 06/09/2024	975.052	941.930	1,018.541	1,033.561	1,033.109
PRESS RELEASE CONTRIBUTION TO BFP 04/09/2024 - 06/09/2024	1,103.270	1,063.270	1,125.630	1,135.030	1,123.128
UNIT OVER/(UNDER) RECOVERY - 06/09/2024	128.218	121.340	107.089	101.469	90.019
AVERAGE BASIC FUEL PRICE 30/08/2024 - 06/09/2024	1,017.657	986.318	1,057.799	1,073.598	1,068.406
AVERAGE UNIT OVER/(UNDER) RECOVERY 30/08/2024 - 06/09/2024	134.263	125.602	107.331	113.932	106.222

### ANALYSIS MOVEMENT OF AVERAGE OVER/(UNDER) RECOVERY

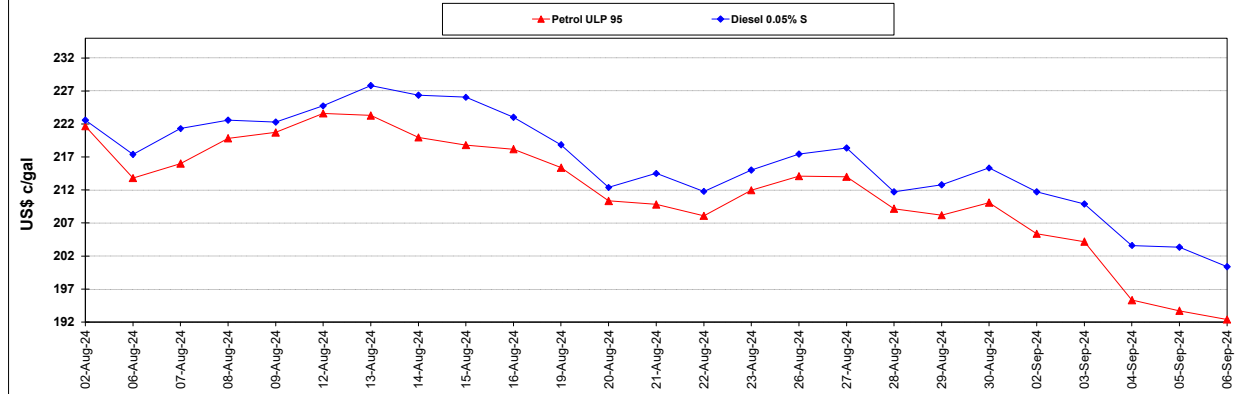
	PETROL 95	PETROL 93	DIESEL 0.05%	DIESEL 0.005%	ILL. PAR.
- MOVEMENT IN INTERNATIONAL PRODUCT PRICES	120.150	111.924	92.661	99.043	91.405
- MOVEMENT IN EXCHANGE RATE	14.113	13.678	14.670	14.889	14.817
AVERAGE UNIT OVER/(UNDER) RECOVERY 30/08/2024 - 06/09/2024	134.263	125.602	107.331	113.932	106.222

R/\$ EXCHANGE RATE - (R/\$17.7250 - 06/09/2024)

### EXCHANGE RATE USED IN BASIC FUEL PRICE



### INTERNATIONAL PRODUCT PRICES OF BASKET USED IN BASIC FUEL PRICE



### BASIC FUEL PRICE IN SA CENTS PER LITRE

