

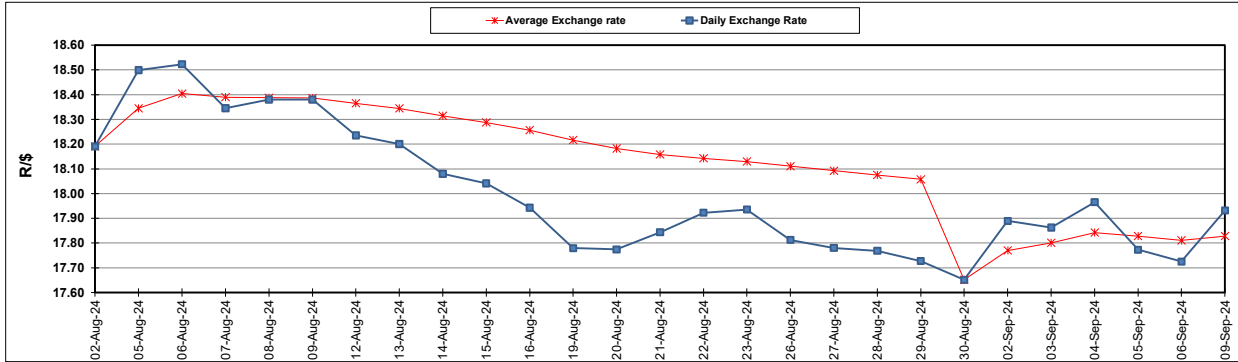
South African Cents per Litre (SA c/l)	PETROL 95 ULP	PETROL 93 ULP & LRP	DIESEL 0.05%	DIESEL 0.005%	ILL. PAR.
GAUTENG PUMP PRICE AS FROM 04/09/2024	2,219.000	2,179.000	-	-	-
WHOLESALE PRICE AS FROM 04/09/2024	-	-	1,959.170	1,968.570	1,376.938
SINGLE NATIONAL MAXIMUM RETAIL PRICE AS FROM 04/09/2024	-	-	-	-	1,756.000
BASIC FUEL PRICE - 09/09/2024	992.437	958.947	1,024.053	1,039.085	1,037.621
PRESS RELEASE CONTRIBUTION TO BFP 04/09/2024 - 09/09/2024	1,103.270	1,063.270	1,125.630	1,135.030	1,123.128
UNIT OVER/(UNDER) RECOVERY - 09/09/2024	110.833	104.323	101.577	95.945	85.507
AVERAGE BASIC FUEL PRICE 30/08/2024 - 09/09/2024	1,014.054	982.408	1,052.978	1,068.667	1,064.008
AVERAGE UNIT OVER/(UNDER) RECOVERY 30/08/2024 - 09/09/2024	130.916	122.562	106.509	111.363	103.263

ANALYSIS MOVEMENT OF AVERAGE OVER/(UNDER) RECOVERY

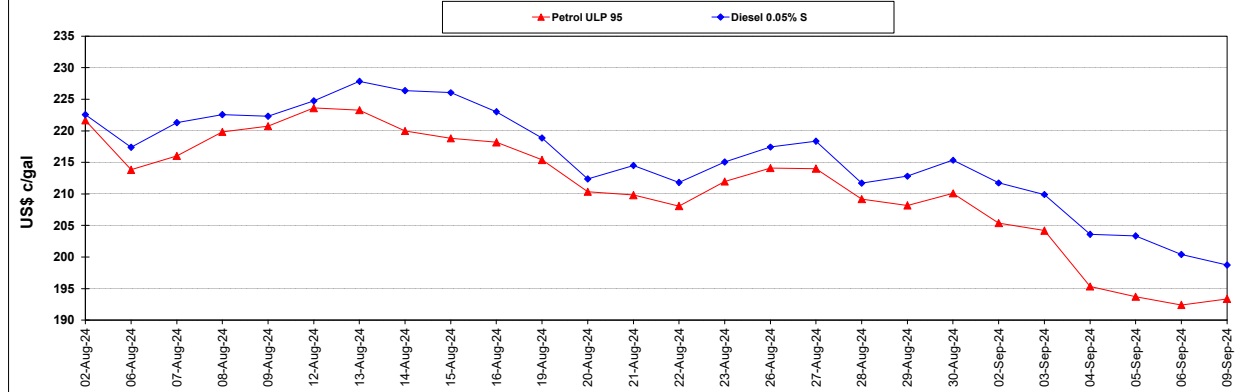
	PETROL 95	PETROL 93	DIESEL 0.05%	DIESEL 0.005%	ILL. PAR.
- MOVEMENT IN INTERNATIONAL PRODUCT PRICES	117.845	109.899	92.936	97.588	89.548
- MOVEMENT IN EXCHANGE RATE	13.071	12.663	13.573	13.775	13.715
AVERAGE UNIT OVER/(UNDER) RECOVERY 30/08/2024 - 09/09/2024	130.916	122.562	106.509	111.363	103.263

R/\$ EXCHANGE RATE - (R/\$17.9313 - 09/09/2024)

EXCHANGE RATE USED IN BASIC FUEL PRICE



INTERNATIONAL PRODUCT PRICES OF BASKET USED IN BASIC FUEL PRICE



BASIC FUEL PRICE IN SA CENTS PER LITRE

