

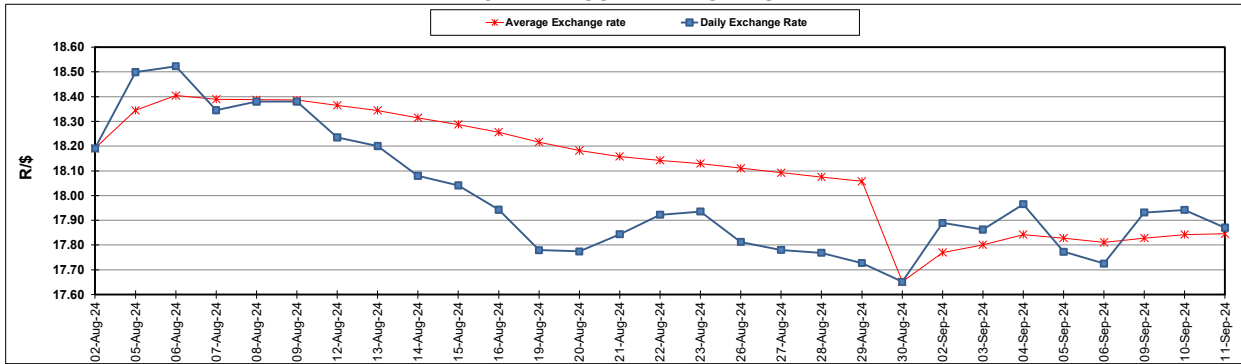
South African Cents per Litre (SA c/l)	PETROL 95 ULP	PETROL 93 ULP & LRP	DIESEL 0.05%	DIESEL 0.005%	ILL. PAR.
GAUTENG PUMP PRICE AS FROM 04/09/2024	2,219.000	2,179.000	-	-	-
WHOLESALE PRICE AS FROM 04/09/2024	-	-	1,959.170	1,968.570	1,376.938
SINGLE NATIONAL MAXIMUM RETAIL PRICE AS FROM 04/09/2024	-	-	-	-	1,756.000
BASIC FUEL PRICE - 11/09/2024	970.272	941.179	990.335	1,006.344	999.710
PRESS RELEASE CONTRIBUTION TO BFP 04/09/2024 - 11/09/2024	1,103.270	1,063.270	1,125.630	1,135.030	1,123.128
UNIT OVER/(UNDER) RECOVERY - 11/09/2024	132.998	122.091	135.295	128.686	123.418
AVERAGE BASIC FUEL PRICE 30/08/2024 - 11/09/2024	1,005.240	974.148	1,040.935	1,056.674	1,051.781
AVERAGE UNIT OVER/(UNDER) RECOVERY 30/08/2024 - 11/09/2024	130.463	121.555	111.028	113.356	105.680

ANALYSIS MOVEMENT OF AVERAGE OVER/(UNDER) RECOVERY

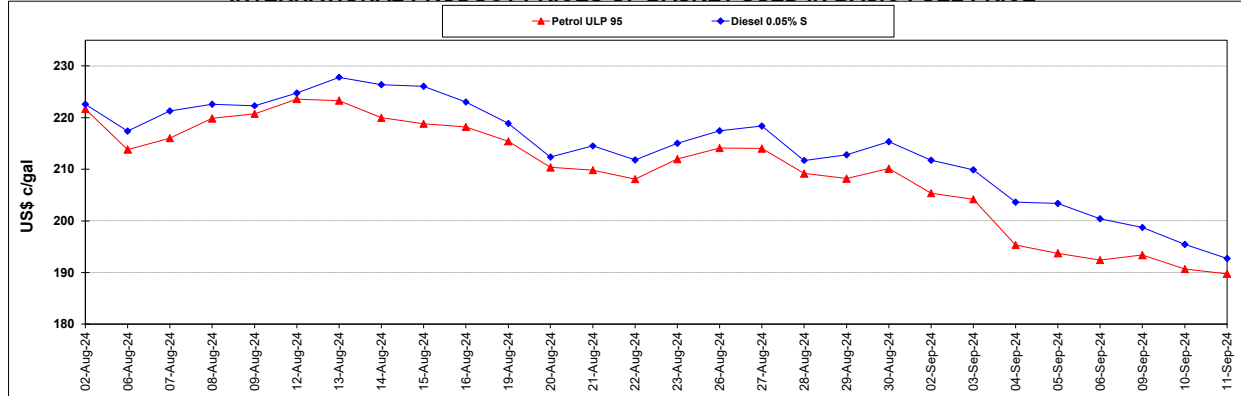
	PETROL 95	PETROL 93	DIESEL 0.05%	DIESEL 0.005%	ILL. PAR.
- MOVEMENT IN INTERNATIONAL PRODUCT PRICES	118.498	109.960	98.639	100.779	93.161
- MOVEMENT IN EXCHANGE RATE	11.965	11.595	12.389	12.577	12.519
AVERAGE UNIT OVER/(UNDER) RECOVERY 30/08/2024 - 11/09/2024	130.463	121.555	111.028	113.356	105.680

R/\$ EXCHANGE RATE - (R/\$17.8700 - 11/09/2024)

EXCHANGE RATE USED IN BASIC FUEL PRICE



INTERNATIONAL PRODUCT PRICES OF BASKET USED IN BASIC FUEL PRICE



BASIC FUEL PRICE IN SA CENTS PER LITRE

