

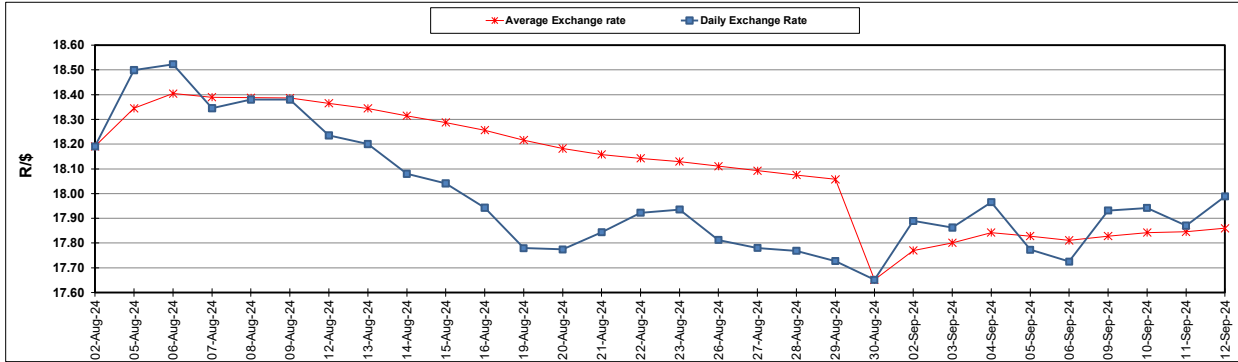
South African Cents per Litre (SA c/l)	PETROL 95 ULP	PETROL 93 ULP & LRP	DIESEL 0.05%	DIESEL 0.005%	ILL. PAR.
GAUTENG PUMP PRICE AS FROM 04/09/2024	2,219.000	2,179.000	-	-	-
WHOLESALE PRICE AS FROM 04/09/2024	-	-	1,959.170	1,968.570	1,376.938
SINGLE NATIONAL MAXIMUM RETAIL PRICE AS FROM 04/09/2024	-	-	-	-	1,756.000
BASIC FUEL PRICE - 12/09/2024	996.515	967.227	1,025.424	1,041.721	1,030.531
PRESS RELEASE CONTRIBUTION TO BFP 04/09/2024 - 12/09/2024	1,103.270	1,063.270	1,125.630	1,135.030	1,123.128
UNIT OVER/(UNDER) RECOVERY - 12/09/2024	106.755	96.043	100.206	93.309	92.597
AVERAGE BASIC FUEL PRICE 30/08/2024 - 12/09/2024	1,004.367	973.456	1,039.384	1,055.179	1,049.656
AVERAGE UNIT OVER/(UNDER) RECOVERY 30/08/2024 - 12/09/2024	128.093	119.004	109.946	111.351	104.372

ANALYSIS MOVEMENT OF AVERAGE OVER/(UNDER) RECOVERY

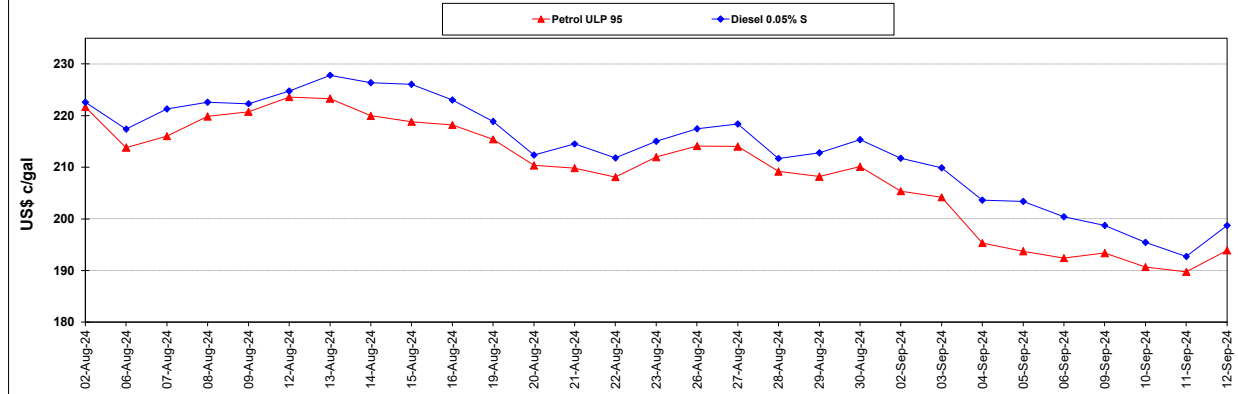
	PETROL 95	PETROL 93	DIESEL 0.05%	DIESEL 0.005%	ILL. PAR.
- MOVEMENT IN INTERNATIONAL PRODUCT PRICES	116.953	108.206	98.417	99.647	92.729
- MOVEMENT IN EXCHANGE RATE	11.140	10.798	11.529	11.704	11.643
AVERAGE UNIT OVER/(UNDER) RECOVERY 30/08/2024 - 12/09/2024	128.093	119.004	109.946	111.351	104.372

R/\$ EXCHANGE RATE - (R/\$17.9885 - 12/09/2024)

EXCHANGE RATE USED IN BASIC FUEL PRICE



INTERNATIONAL PRODUCT PRICES OF BASKET USED IN BASIC FUEL PRICE



BASIC FUEL PRICE IN SA CENTS PER LITRE

