

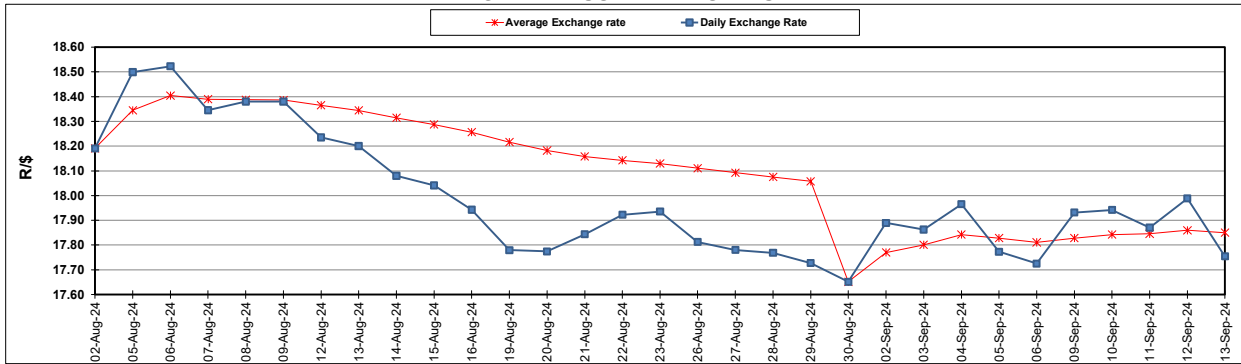
| South African Cents per Litre (SA c/l) | PETROL 95 ULP | PETROL 93 ULP & LRP | DIESEL 0.05% | DIESEL 0.005% | ILL. PAR. |
|--|---------------|---------------------|--------------|---------------|-----------|
| GAUTENG PUMP PRICE AS FROM 04/09/2024 | 2,219.000 | 2,179.000 | - | - | - |
| WHOLESALE PRICE AS FROM 04/09/2024 | - | - | 1,959.170 | 1,968.570 | 1,376.938 |
| SINGLE NATIONAL MAXIMUM RETAIL PRICE AS FROM 04/09/2024 | - | - | - | - | 1,756.000 |
| BASIC FUEL PRICE - 13/09/2024 | 993.858 | 960.754 | 1,017.068 | 1,033.047 | 1,021.420 |
| PRESS RELEASE CONTRIBUTION TO BFP 04/09/2024 - 13/09/2024 | 1,103.270 | 1,063.270 | 1,125.630 | 1,135.030 | 1,123.128 |
| UNIT OVER/(UNDER) RECOVERY - 13/09/2024 | 109.412 | 102.516 | 108.562 | 101.983 | 101.708 |
| AVERAGE BASIC FUEL PRICE 30/08/2024 - 13/09/2024 | 1,003.412 | 972.302 | 1,037.355 | 1,053.167 | 1,047.089 |
| AVERAGE UNIT OVER/(UNDER) RECOVERY 30/08/2024 - 13/09/2024 | 126.394 | 117.504 | 109.820 | 110.499 | 104.130 |

ANALYSIS MOVEMENT OF AVERAGE OVER/(UNDER) RECOVERY

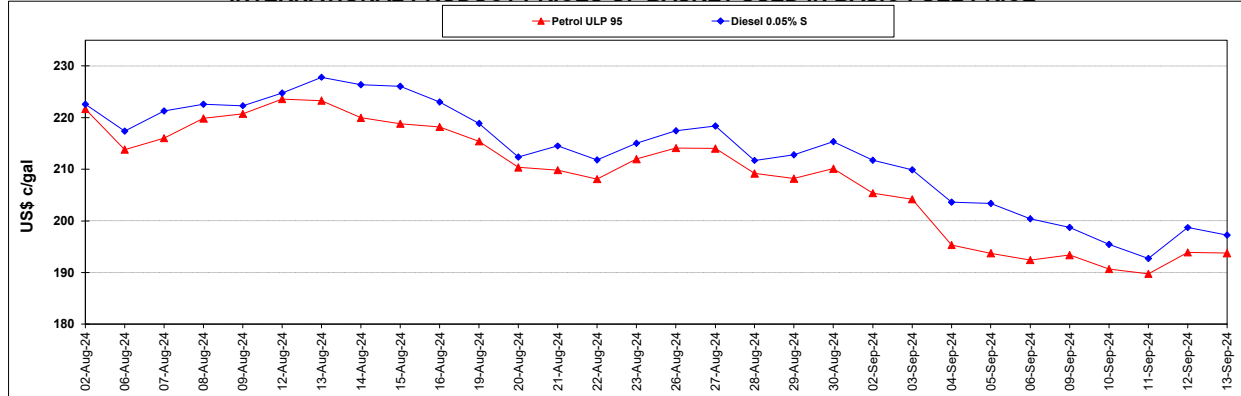
| | PETROL 95 | PETROL 93 | DIESEL 0.05% | DIESEL 0.005% | ILL. PAR. |
|--|-----------|-----------|--------------|---------------|-----------|
| - MOVEMENT IN INTERNATIONAL PRODUCT PRICES | 114.719 | 106.190 | 97.750 | 98.245 | 91.946 |
| - MOVEMENT IN EXCHANGE RATE | 11.675 | 11.314 | 12.070 | 12.254 | 12.184 |
| AVERAGE UNIT OVER/(UNDER) RECOVERY 30/08/2024 - 13/09/2024 | 126.394 | 117.504 | 109.820 | 110.499 | 104.130 |

R/\$ EXCHANGE RATE - (R/\$17.7540 - 13/09/2024)

EXCHANGE RATE USED IN BASIC FUEL PRICE



INTERNATIONAL PRODUCT PRICES OF BASKET USED IN BASIC FUEL PRICE



BASIC FUEL PRICE IN SA CENTS PER LITRE

