

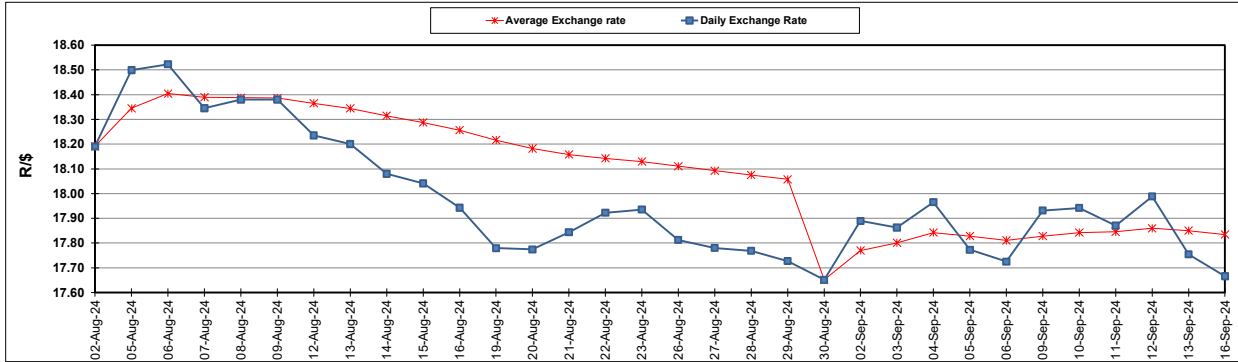
South African Cents per Litre (SA c/l)	PETROL 95 ULP	PETROL 93 ULP & LRP	DIESEL 0.05%	DIESEL 0.005%	ILL. PAR.
GAUTENG PUMP PRICE AS FROM 04/09/2024	2,219.000	2,179.000	-	-	-
WHOLESALE PRICE AS FROM 04/09/2024	-	-	1,959.170	1,968.570	1,376.938
SINGLE NATIONAL MAXIMUM RETAIL PRICE AS FROM 04/09/2024	-	-	-	-	1,756.000
BASIC FUEL PRICE - 16/09/2024	991.179	958.239	1,001.224	1,016.891	1,007.045
PRESS RELEASE CONTRIBUTION TO BFP 04/09/2024 - 16/09/2024	1,103.270	1,063.270	1,125.630	1,135.030	1,123.128
UNIT OVER/(UNDER) RECOVERY - 16/09/2024	112.091	105.031	124.406	118.139	116.083
AVERAGE BASIC FUEL PRICE 30/08/2024 - 16/09/2024	1,002.393	971.130	1,034.344	1,050.144	1,043.752
AVERAGE UNIT OVER/(UNDER) RECOVERY 30/08/2024 - 16/09/2024	125.202	116.465	111.036	111.136	105.126

ANALYSIS MOVEMENT OF AVERAGE OVER/(UNDER) RECOVERY

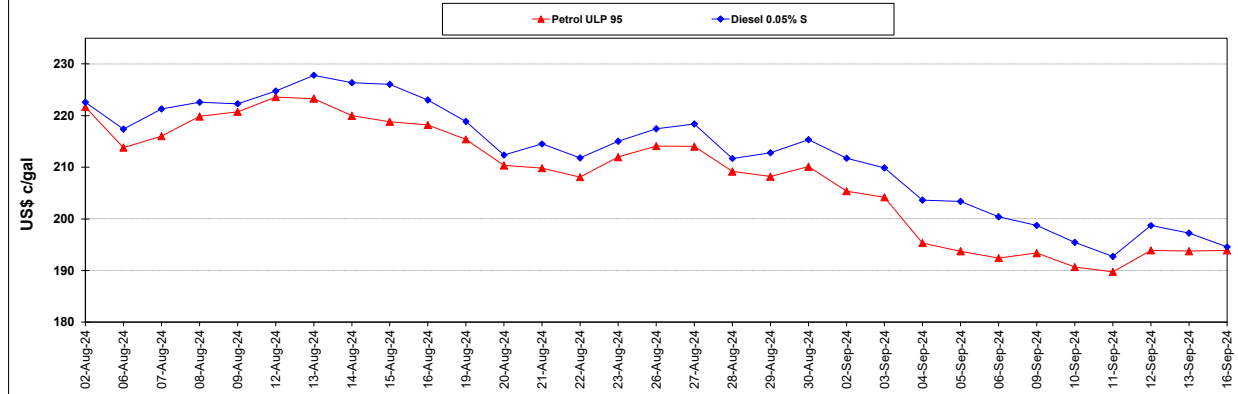
	PETROL 95	PETROL 93	DIESEL 0.05%	DIESEL 0.005%	ILL. PAR.
- MOVEMENT IN INTERNATIONAL PRODUCT PRICES	112.663	104.317	98.097	97.999	92.069
- MOVEMENT IN EXCHANGE RATE	12.539	12.148	12.939	13.137	13.057
AVERAGE UNIT OVER/(UNDER) RECOVERY 30/08/2024 - 16/09/2024	125.202	116.465	111.036	111.136	105.126

R/\$ EXCHANGE RATE - (R/\$17.6653 - 16/09/2024)

EXCHANGE RATE USED IN BASIC FUEL PRICE



INTERNATIONAL PRODUCT PRICES OF BASKET USED IN BASIC FUEL PRICE



BASIC FUEL PRICE IN SA CENTS PER LITRE

