

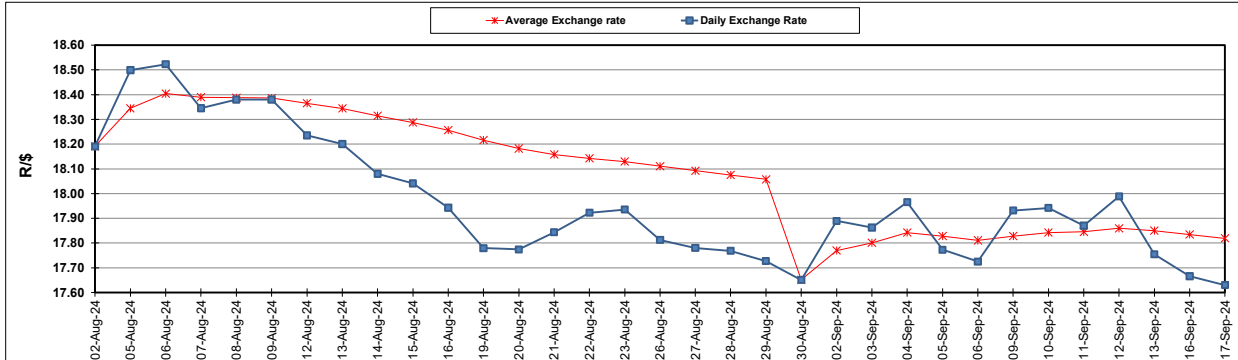
South African Cents per Litre (SA c/l)	PETROL 95 ULP	PETROL 93 ULP & LRP	DIESEL 0.05%	DIESEL 0.005%	ILL. PAR.
GAUTENG PUMP PRICE AS FROM 04/09/2024	2 219.000	2 179.000	-	-	-
WHOLESALE PRICE AS FROM 04/09/2024	-	-	1 959.170	1 968.570	1 376.938
SINGLE NATIONAL MAXIMUM RETAIL PRICE AS FROM 04/09/2024	-	-	-	-	1 756.000
BASIC FUEL PRICE - 17/09/2024	1 001.472	963.464	1 000.594	1 016.907	1 004.496
PRESS RELEASE CONTRIBUTION TO BFP 04/09/2024 - 17/09/2024	1 103.270	1 063.270	1 125.630	1 135.030	1 123.128
UNIT OVER/(UNDER) RECOVERY - 17/09/2024	101.798	99.806	125.036	118.123	118.632
AVERAGE BASIC FUEL PRICE 30/08/2024 - 17/09/2024	1 002.322	970.540	1 031.748	1 047.587	1 040.732
AVERAGE UNIT OVER/(UNDER) RECOVERY 30/08/2024 - 17/09/2024	123.402	115.184	112.113	111.674	106.165

ANALYSIS MOVEMENT OF AVERAGE OVER/(UNDER) RECOVERY

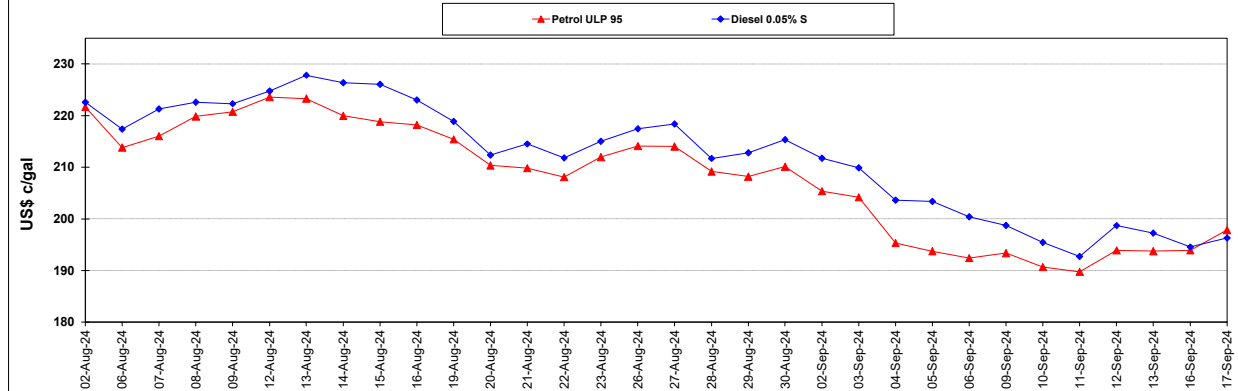
	PETROL 95	PETROL 93	DIESEL 0.05%	DIESEL 0.005%	ILL. PAR.
- MOVEMENT IN INTERNATIONAL PRODUCT PRICES	109.964	102.172	98.280	97.629	92.212
- MOVEMENT IN EXCHANGE RATE	13.438	13.012	13.833	14.045	13.953
AVERAGE UNIT OVER/(UNDER) RECOVERY 30/08/2024 - 17/09/2024	123.402	115.184	112.113	111.674	106.165

R/\$ EXCHANGE RATE - (R/\$17.6300 - 17/09/2024)

EXCHANGE RATE USED IN BASIC FUEL PRICE



INTERNATIONAL PRODUCT PRICES OF BASKET USED IN BASIC FUEL PRICE



BASIC FUEL PRICE IN SA CENTS PER LITRE

