

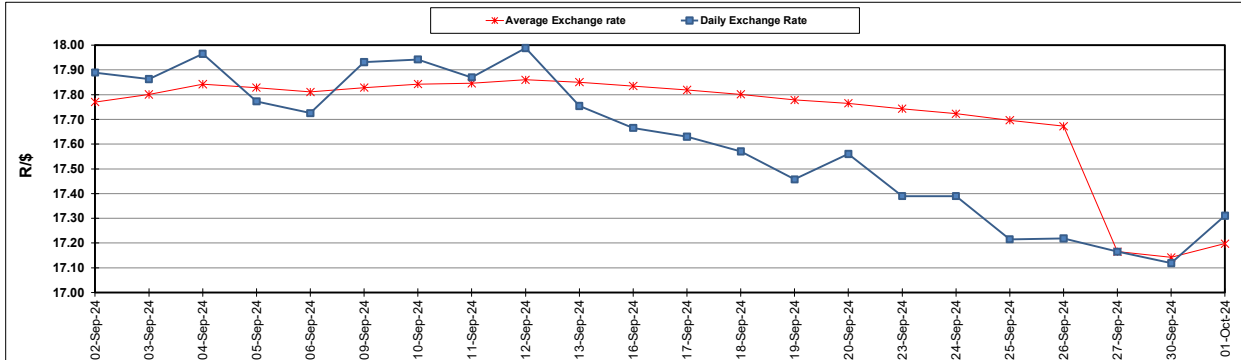
South African Cents per Litre (SA c/l)	PETROL 95 ULP	PETROL 93 ULP & LRP	DIESEL 0.05%	DIESEL 0.005%	ILL. PAR.
GAUTENG PUMP PRICE AS FROM 02/10/2024	2 105.000	2 073.000	-	-	-
WHOLESALE PRICE AS FROM 02/10/2024	-	-	1 845.170	1 856.570	1 265.938
SINGLE NATIONAL MAXIMUM RETAIL PRICE AS FROM 02/10/2024	-	-	-	-	1 608.000
BASIC FUEL PRICE - 01/10/2024	964.856	920.263	994.077	1 005.155	985.304
PRESS RELEASE CONTRIBUTION TO BFP 27/09/2024 - 01/10/2024	1 103.270	1 063.270	1 125.630	1 135.030	1 123.128
UNIT OVER/(UNDER) RECOVERY - 01/10/2024	138.414	143.007	131.553	129.875	137.824
AVERAGE BASIC FUEL PRICE 27/09/2024 - 01/10/2024	962.916	925.591	987.557	998.910	980.458
AVERAGE UNIT OVER/(UNDER) RECOVERY 27/09/2024 - 01/10/2024	140.354	137.679	138.073	136.120	142.670

ANALYSIS MOVEMENT OF AVERAGE OVER/(UNDER) RECOVERY

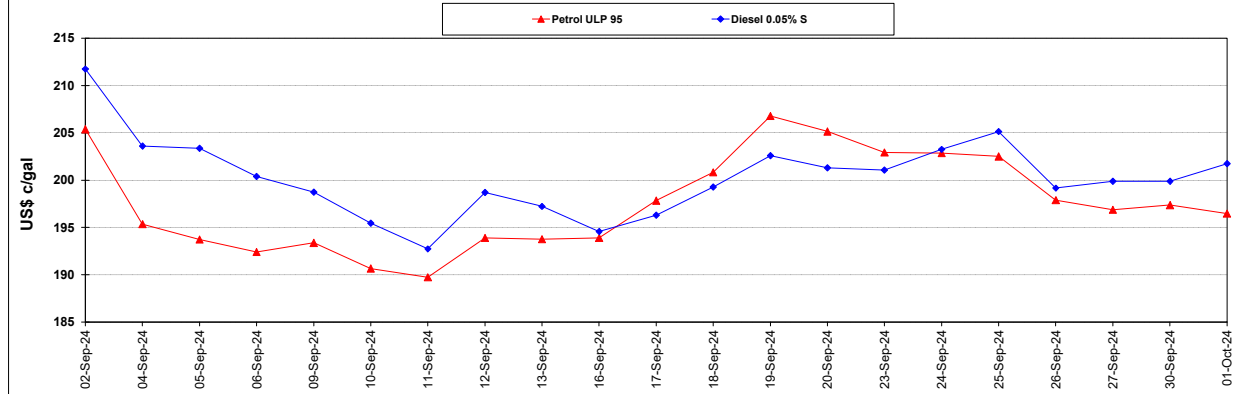
	PETROL 95	PETROL 93	DIESEL 0.05%	DIESEL 0.005%	ILL. PAR.
- MOVEMENT IN INTERNATIONAL PRODUCT PRICES	113.792	112.147	110.831	108.565	115.624
- MOVEMENT IN EXCHANGE RATE	26.562	25.532	27.242	27.555	27.046
AVERAGE UNIT OVER/(UNDER) RECOVERY 27/09/2024 - 01/10/2024	140.354	137.679	138.073	136.120	142.670

R/\$ EXCHANGE RATE - (R/\$17.3100 - 01/10/2024)

EXCHANGE RATE USED IN BASIC FUEL PRICE



INTERNATIONAL PRODUCT PRICES OF BASKET USED IN BASIC FUEL PRICE



BASIC FUEL PRICE IN SA CENTS PER LITRE

