

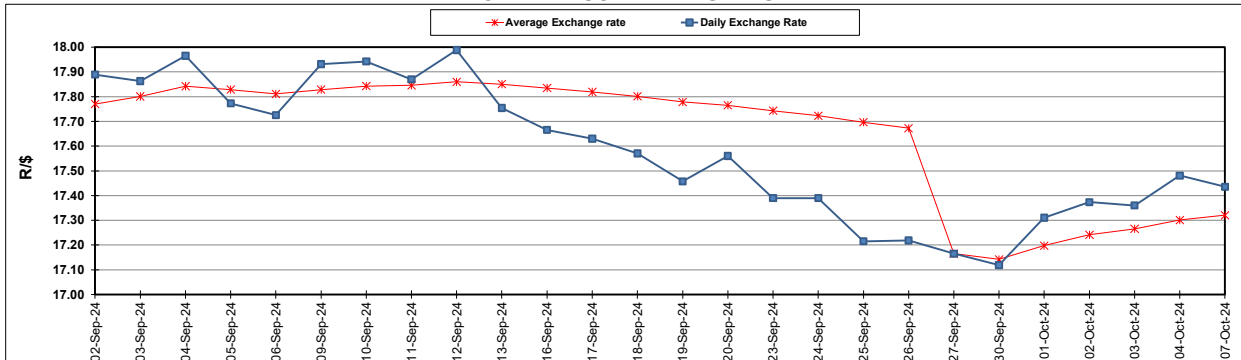
South African Cents per Litre (SA c/l)	PETROL 95 ULP	PETROL 93 ULP & LRP	DIESEL 0.05%	DIESEL 0.005%	ILL. PAR.
GAUTENG PUMP PRICE AS FROM 02/10/2024	2 105.000	2 073.000	-	-	-
WHOLESALE PRICE AS FROM 02/10/2024	-	-	1 845.170	1 856.570	1 265.938
SINGLE NATIONAL MAXIMUM RETAIL PRICE AS FROM 02/10/2024	-	-	-	-	1 608.000
BASIC FUEL PRICE - 07/10/2024	1 059.121	1 011.914	1 095.066	1 103.880	1 090.735
PRESS RELEASE CONTRIBUTION TO BFP 02/10/2024 - 07/10/2024	989.070	957.070	1 011.630	1 023.030	1 012.128
UNIT OVER/(UNDER) RECOVERY - 07/10/2024	(70.051)	(54.844)	(83.436)	(80.850)	(78.607)
AVERAGE BASIC FUEL PRICE 27/09/2024 - 07/10/2024	999.404	957.321	1 026.914	1 036.953	1 020.807
AVERAGE UNIT OVER/(UNDER) RECOVERY 27/09/2024 - 07/10/2024	38.609	45.263	33.573	34.077	38.892

ANALYSIS MOVEMENT OF AVERAGE OVER/(UNDER) RECOVERY

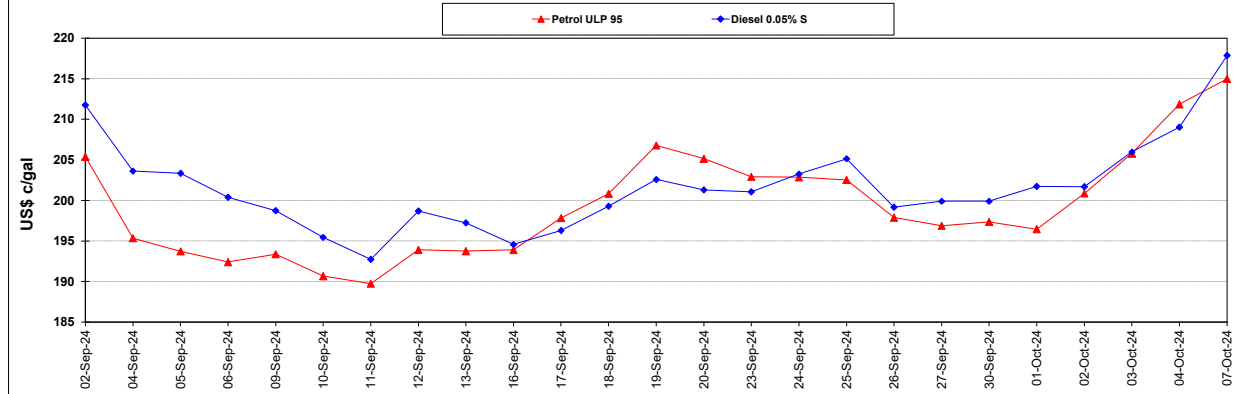
	PETROL 95	PETROL 93	DIESEL 0.05%	DIESEL 0.005%	ILL. PAR.
- MOVEMENT IN INTERNATIONAL PRODUCT PRICES	18.298	25.807	12.703	13.003	18.146
- MOVEMENT IN EXCHANGE RATE	20.311	19.456	20.870	21.074	20.746
AVERAGE UNIT OVER/(UNDER) RECOVERY 27/09/2024 - 07/10/2024	38.609	45.263	33.573	34.077	38.892

R/\$ EXCHANGE RATE - (R/\$17.4350 - 07/10/2024)

EXCHANGE RATE USED IN BASIC FUEL PRICE



INTERNATIONAL PRODUCT PRICES OF BASKET USED IN BASIC FUEL PRICE



BASIC FUEL PRICE IN SA CENTS PER LITRE

