

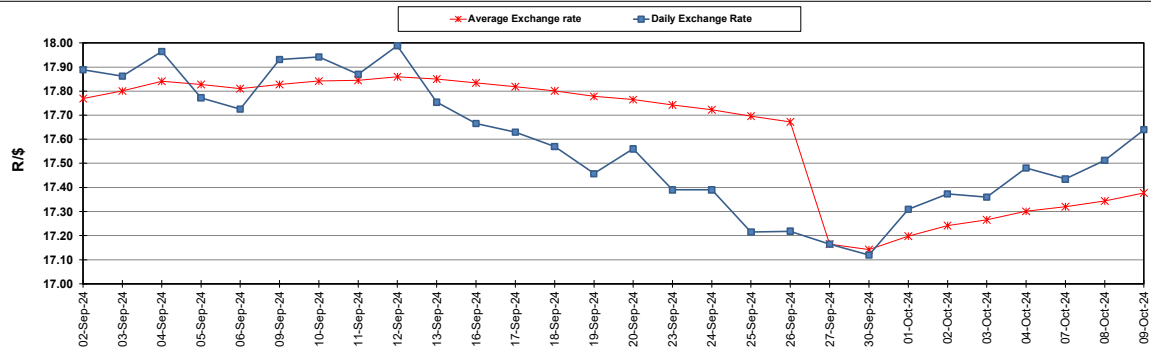
South African Cents per Litre (SA c/l)	PETROL 95 ULP	PETROL 93 ULP & LRP	DIESEL 0.05%	DIESEL 0.005%	ILL. PAR.
GAUTENG PUMP PRICE AS FROM 02/10/2024	2 105.000	2 073.000	-	-	-
WHOLESALE PRICE AS FROM 02/10/2024	-	-	1 845.170	1 856.570	1 265.938
SINGLE NATIONAL MAXIMUM RETAIL PRICE AS FROM 02/10/2024	-	-	-	-	1 608.000
BASIC FUEL PRICE - 09/10/2024	1 060.030	1 012.251	1 086.949	1 095.547	1 075.666
PRESS RELEASE CONTRIBUTION TO BFP 02/10/2024 - 09/10/2024	989.070	957.070	1 011.630	1 023.030	1 012.128
UNIT OVER/(UNDER) RECOVERY - 09/10/2024	(70.960)	(55.181)	(75.319)	(72.517)	(63.538)
AVERAGE BASIC FUEL PRICE 27/09/2024 - 09/10/2024	1 012.575	969.264	1 040.189	1 049.911	1 033.331
AVERAGE UNIT OVER/(UNDER) RECOVERY 27/09/2024 - 09/10/2024	14.562	23.206	9.441	10.452	15.797

ANALYSIS MOVEMENT OF AVERAGE OVER/(UNDER) RECOVERY

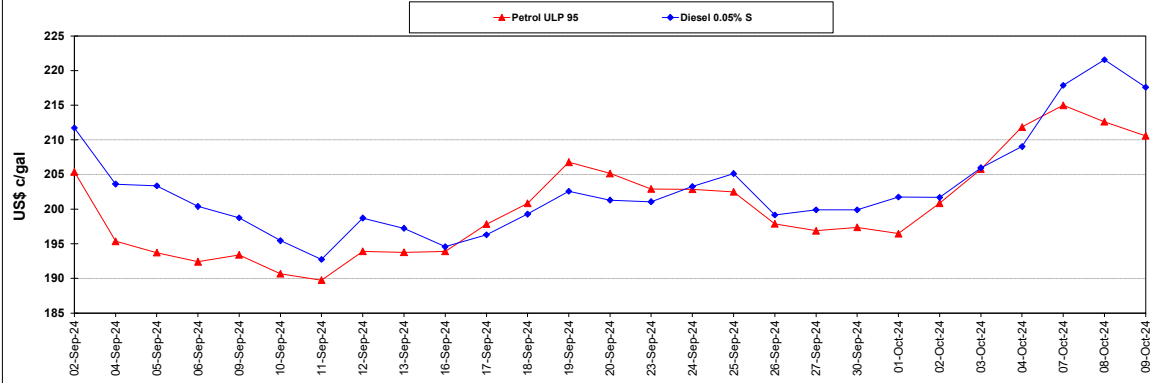
	PETROL 95	PETROL 93	DIESEL 0.05%	DIESEL 0.005%	ILL. PAR.
- MOVEMENT IN INTERNATIONAL PRODUCT PRICES	(2.634)	6.746	(8.224)	(7.378)	(1.751)
- MOVEMENT IN EXCHANGE RATE	17.196	16.460	17.665	17.830	17.548
AVERAGE UNIT OVER/(UNDER) RECOVERY 27/09/2024 - 09/10/2024	14.562	23.206	9.441	10.452	15.797

R/\$ EXCHANGE RATE - (R/\$17.6398 - 09/10/2024)

EXCHANGE RATE USED IN BASIC FUEL PRICE



INTERNATIONAL PRODUCT PRICES OF BASKET USED IN BASIC FUEL PRICE



BASIC FUEL PRICE IN SA CENTS PER LITRE

