

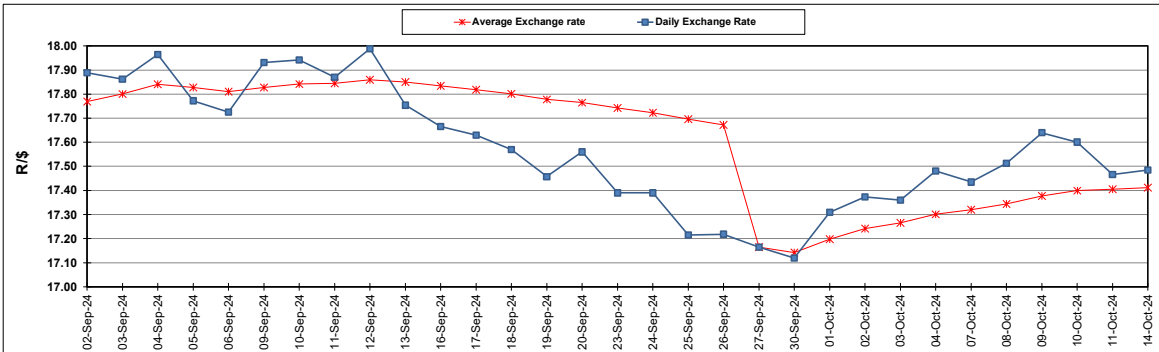
South African Cents per Litre (SA c/l)	PETROL 95 ULP	PETROL 93 ULP & LRP	DIESEL 0.05%	DIESEL 0.005%	ILL. PAR.
GAUTENG PUMP PRICE AS FROM 02/10/2024	2 105.000	2 073.000	-	-	-
WHOLESALE PRICE AS FROM 02/10/2024	-	-	1 845.170	1 856.570	1 265.938
SINGLE NATIONAL MAXIMUM RETAIL PRICE AS FROM 02/10/2024	-	-	-	-	1 608.000
BASIC FUEL PRICE - 14/10/2024	1 082.517	1 035.176	1 089.034	1 098.385	1 080.466
PRESS RELEASE CONTRIBUTION TO BFP 02/10/2024 - 14/10/2024	989.070	957.070	1 011.630	1 023.030	1 012.128
UNIT OVER/(UNDER) RECOVERY - 14/10/2024	(93.447)	(78.106)	(77.404)	(75.355)	(68.338)
AVERAGE BASIC FUEL PRICE 27/09/2024 - 14/10/2024	1 031.227	986.885	1 054.343	1 063.963	1 047.090
AVERAGE UNIT OVER/(UNDER) RECOVERY 27/09/2024 - 14/10/2024	(13.607)	(3.265)	(14.213)	(12.933)	(7.212)

ANALYSIS MOVEMENT OF AVERAGE OVER/(UNDER) RECOVERY

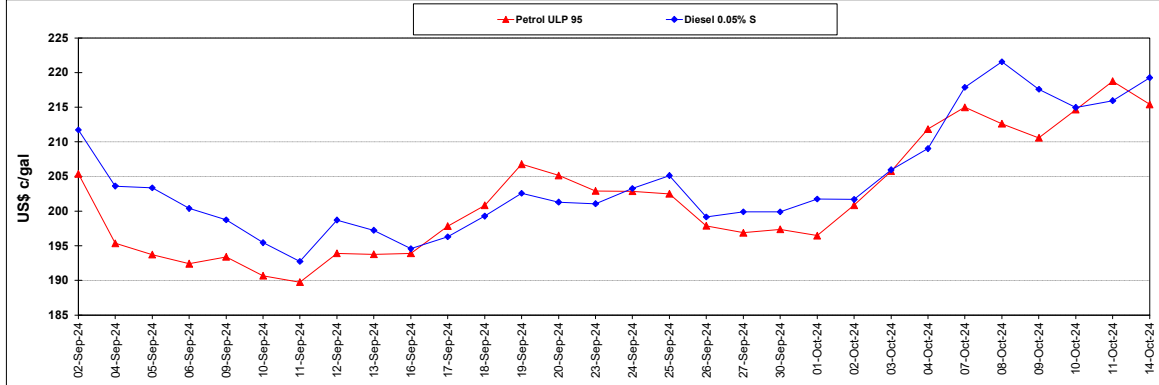
	PETROL 95	PETROL 93	DIESEL 0.05%	DIESEL 0.005%	ILL. PAR.
- MOVEMENT IN INTERNATIONAL PRODUCT PRICES	(29.005)	(18.001)	(29.956)	(28.820)	(22.847)
- MOVEMENT IN EXCHANGE RATE	15.398	14.736	15.743	15.887	15.635
AVERAGE UNIT OVER/(UNDER) RECOVERY 27/09/2024 - 14/10/2024	(13.607)	(3.265)	(14.213)	(12.933)	(7.212)

R/\$ EXCHANGE RATE - (R/\$17.4853 - 14/10/2024)

EXCHANGE RATE USED IN BASIC FUEL PRICE



INTERNATIONAL PRODUCT PRICES OF BASKET USED IN BASIC FUEL PRICE



BASIC FUEL PRICE IN SA CENTS PER LITRE

