

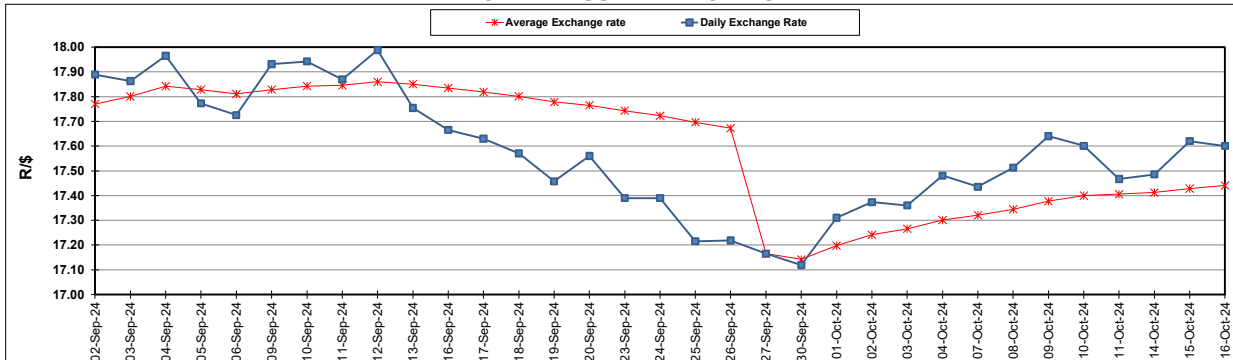
South African Cents per Litre (SA c/l)	PETROL 95 ULP	PETROL 93 ULP & LRP	DIESEL 0.05%	DIESEL 0.005%	ILL. PAR.
GAUTENG PUMP PRICE AS FROM 02/10/2024	2 105.000	2 073.000	-	-	-
WHOLESALE PRICE AS FROM 02/10/2024	-	-	1 845.170	1 856.570	1 265.938
SINGLE NATIONAL MAXIMUM RETAIL PRICE AS FROM 02/10/2024	-	-	-	-	1 608.000
BASIC FUEL PRICE - 16/10/2024	1 044.664	996.475	1 038.244	1 047.834	1 035.697
PRESS RELEASE CONTRIBUTION TO BFP 02/10/2024 - 16/10/2024	989.070	957.070	1 011.630	1 023.030	1 012.128
UNIT OVER/(UNDER) RECOVERY - 16/10/2024	(55.594)	(39.405)	(26.614)	(24.804)	(23.569)
AVERAGE BASIC FUEL PRICE 27/09/2024 - 16/10/2024	1 033.191	988.296	1 052.770	1 062.374	1 045.965
AVERAGE UNIT OVER/(UNDER) RECOVERY 27/09/2024 - 16/10/2024	(19.650)	(8.469)	(16.711)	(15.344)	(10.051)

ANALYSIS MOVEMENT OF AVERAGE OVER/(UNDER) RECOVERY

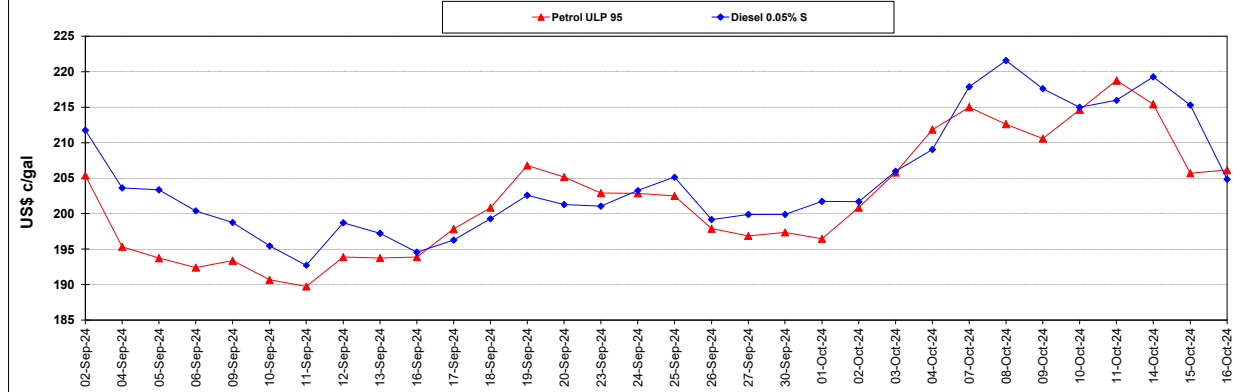
	PETROL 95	PETROL 93	DIESEL 0.05%	DIESEL 0.005%	ILL. PAR.
- MOVEMENT IN INTERNATIONAL PRODUCT PRICES	(33.376)	(21.599)	(30.697)	(29.458)	(23.947)
- MOVEMENT IN EXCHANGE RATE	13.726	13.130	13.986	14.114	13.896
AVERAGE UNIT OVER/(UNDER) RECOVERY 27/09/2024 - 16/10/2024	(19.650)	(8.469)	(16.711)	(15.344)	(10.051)

R/\$ EXCHANGE RATE - (R/\$17.6005 - 16/10/2024)

EXCHANGE RATE USED IN BASIC FUEL PRICE



INTERNATIONAL PRODUCT PRICES OF BASKET USED IN BASIC FUEL PRICE



BASIC FUEL PRICE IN SA CENTS PER LITRE

