

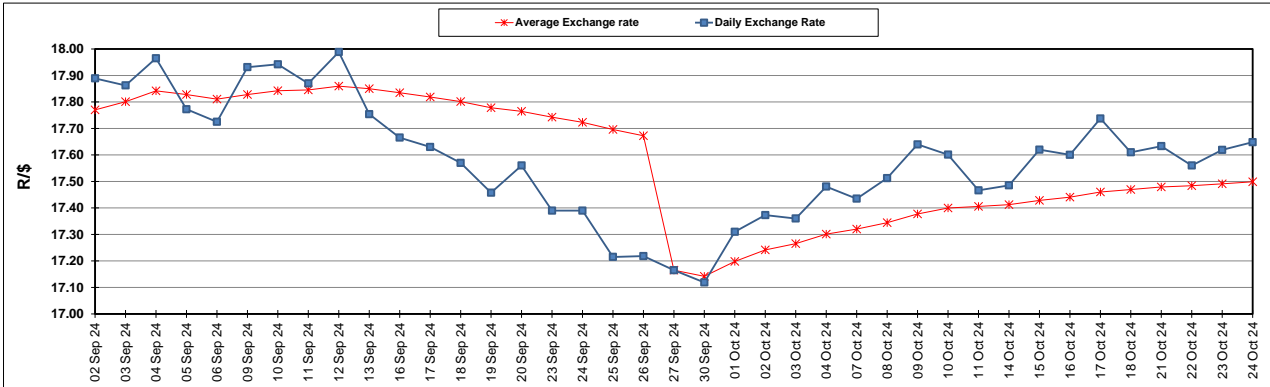
South African Cents per Litre (SA c/l)	PETROL 95 ULP	PETROL 93 ULP & LRP	DIESEL 0.05%	DIESEL 0.005%	ILL. PAR.
GAUTENG PUMP PRICE AS FROM 02/10/2024	2,105.000	2,073.000	-	-	-
WHOLESALE PRICE AS FROM 02/10/2024	-	-	1,845.170	1,856.570	1,265.938
SINGLE NATIONAL MAXIMUM RETAIL PRICE AS FROM 02/10/2024	-	-	-	-	1,608.000
BASIC FUEL PRICE - 24/10/2024	1,031.435	986.863	1,055.827	1,064.303	1,063.710
PRESS RELEASE CONTRIBUTION TO BFP 02/10/2024 - 24/10/2024	989.070	957.070	1,011.630	1,023.030	1,012.128
UNIT OVER/(UNDER) RECOVERY - 24/10/2024	(42.365)	(29.793)	(44.197)	(41.273)	(51.582)
AVERAGE BASIC FUEL PRICE 27/09/2024 - 24/10/2024	1,035.254	990.018	1,051.119	1,060.598	1,046.915
AVERAGE UNIT OVER/(UNDER) RECOVERY 27/09/2024 - 24/10/2024	(29.054)	(17.018)	(22.389)	(20.768)	(18.137)

ANALYSIS MOVEMENT OF AVERAGE OVER/(UNDER) RECOVERY

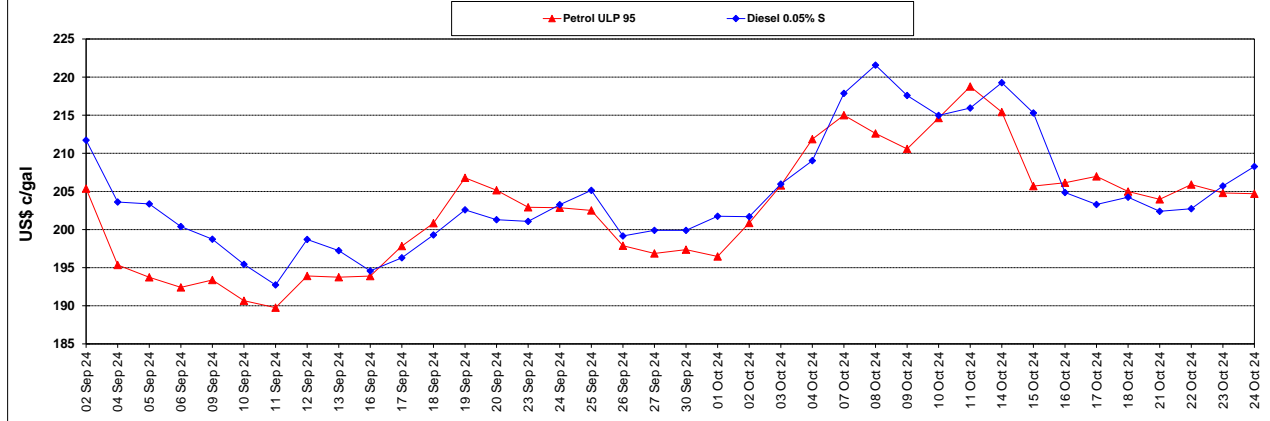
	PETROL 95	PETROL 93	DIESEL 0.05%	DIESEL 0.005%	ILL. PAR.
- MOVEMENT IN INTERNATIONAL PRODUCT PRICES	(39.319)	(26.834)	(32.811)	(31.284)	(28.517)
- MOVEMENT IN EXCHANGE RATE	10.265	9.816	10.422	10.516	10.380
AVERAGE UNIT OVER/(UNDER) RECOVERY 27/09/2024 - 24/10/2024	(29.054)	(17.018)	(22.389)	(20.768)	(18.137)

R/\$ EXCHANGE RATE - (R/\$17.6483 - 24/10/2024)

EXCHANGE RATE USED IN BASIC FUEL PRICE



INTERNATIONAL PRODUCT PRICES OF BASKET USED IN BASIC FUEL PRICE



BASIC FUEL PRICE IN SA CENTS PER LITRE

