

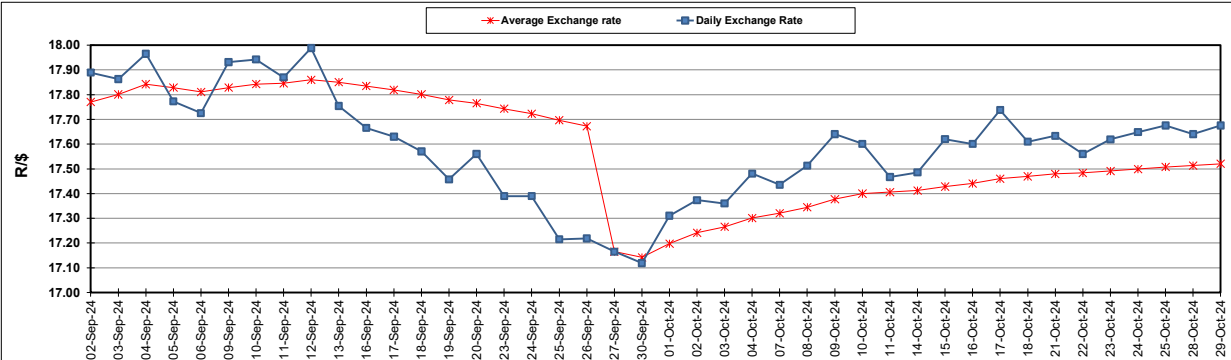
South African Cents per Litre (SA c/l)	PETROL 95 ULP	PETROL 93 ULP & LRP	DIESEL 0.05%	DIESEL 0.005%	ILL. PAR.
GAUTENG PUMP PRICE AS FROM 02/10/2024	2,105.000	2,073.000	-	-	-
WHOLESALE PRICE AS FROM 02/10/2024	-	-	1,845.170	1,856.570	1,265.938
SINGLE NATIONAL MAXIMUM RETAIL PRICE AS FROM 02/10/2024	-	-	-	-	1,608.000
BASIC FUEL PRICE - 29/10/2024	983.277	940.549	1,012.854	1,020.217	1,027.714
PRESS RELEASE CONTRIBUTION TO BFP 02/10/2024 - 29/10/2024	989.070	957.070	1,011.630	1,023.030	1,012.128
UNIT OVER/(UNDER) RECOVERY - 29/10/2024	5.793	16.521	(1.224)	2.813	(15.586)
AVERAGE BASIC FUEL PRICE 27/09/2024 - 29/10/2024	1,030.934	986.029	1,048.217	1,057.452	1,047.123
AVERAGE UNIT OVER/(UNDER) RECOVERY 27/09/2024 - 29/10/2024	(26.968)	(15.107)	(21.717)	(19.813)	(20.517)

### ANALYSIS MOVEMENT OF AVERAGE OVER/(UNDER) RECOVERY

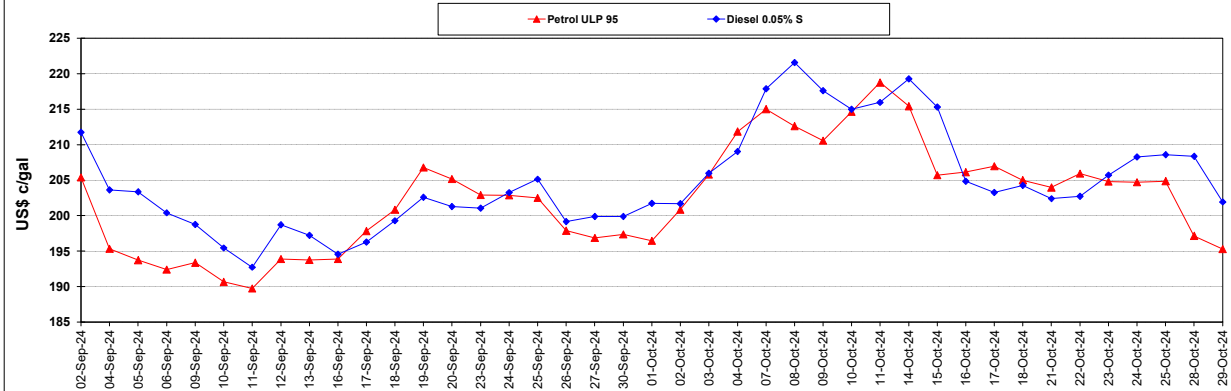
	PETROL 95	PETROL 93	DIESEL 0.05%	DIESEL 0.005%	ILL. PAR.
- MOVEMENT IN INTERNATIONAL PRODUCT PRICES	(35.912)	(23.661)	(30.811)	(28.987)	(29.601)
- MOVEMENT IN EXCHANGE RATE	8.944	8.554	9.094	9.174	9.084
AVERAGE UNIT OVER/(UNDER) RECOVERY 27/09/2024 - 29/10/2024	(26.968)	(15.107)	(21.717)	(19.813)	(20.517)

### R/\$ EXCHANGE RATE - (R/\$17.6750 - 29/10/2024)

#### EXCHANGE RATE USED IN BASIC FUEL PRICE



#### INTERNATIONAL PRODUCT PRICES OF BASKET USED IN BASIC FUEL PRICE



#### BASIC FUEL PRICE IN SA CENTS PER LITRE

