

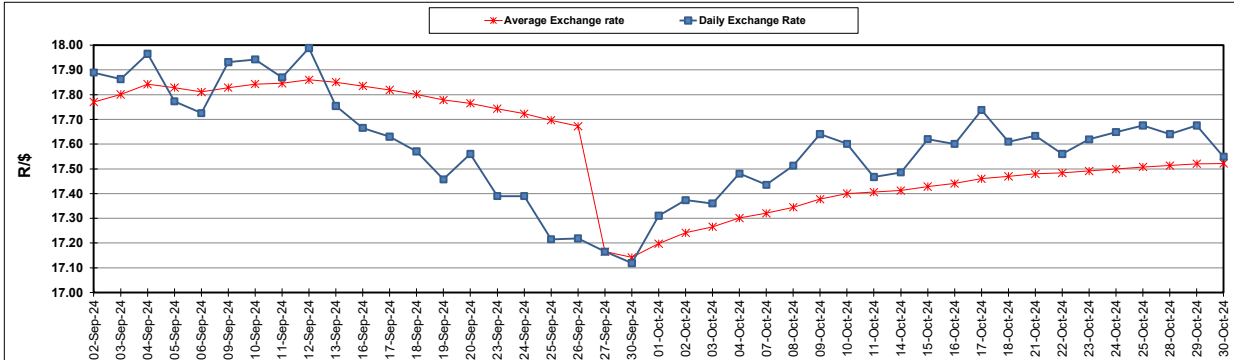
South African Cents per Litre (SA c/l)	PETROL 95 ULP	PETROL 93 ULP & LRP	DIESEL 0.05%	DIESEL 0.005%	ILL. PAR.
GAUTENG PUMP PRICE AS FROM 02/10/2024	2,105.000	2,073.000	-	-	-
WHOLESALE PRICE AS FROM 02/10/2024	-	-	1,845.170	1,856.570	1,265.938
SINGLE NATIONAL MAXIMUM RETAIL PRICE AS FROM 02/10/2024	-	-	-	-	1,608.000
BASIC FUEL PRICE - 30/10/2024	987.105	946.172	1,025.869	1,036.141	1,035.059
PRESS RELEASE CONTRIBUTION TO BFP 02/10/2024 - 30/10/2024	989.070	957.070	1,011.630	1,023.030	1,012.128
UNIT OVER/(UNDER) RECOVERY - 30/10/2024	1.965	10.898	(14.239)	(13.111)	(22.931)
AVERAGE BASIC FUEL PRICE 27/09/2024 - 30/10/2024	1,029.108	984.368	1,047.285	1,056.564	1,046.620
AVERAGE UNIT OVER/(UNDER) RECOVERY 27/09/2024 - 30/10/2024	(25.763)	(14.023)	(21.405)	(19.534)	(20.617)

### ANALYSIS MOVEMENT OF AVERAGE OVER/(UNDER) RECOVERY

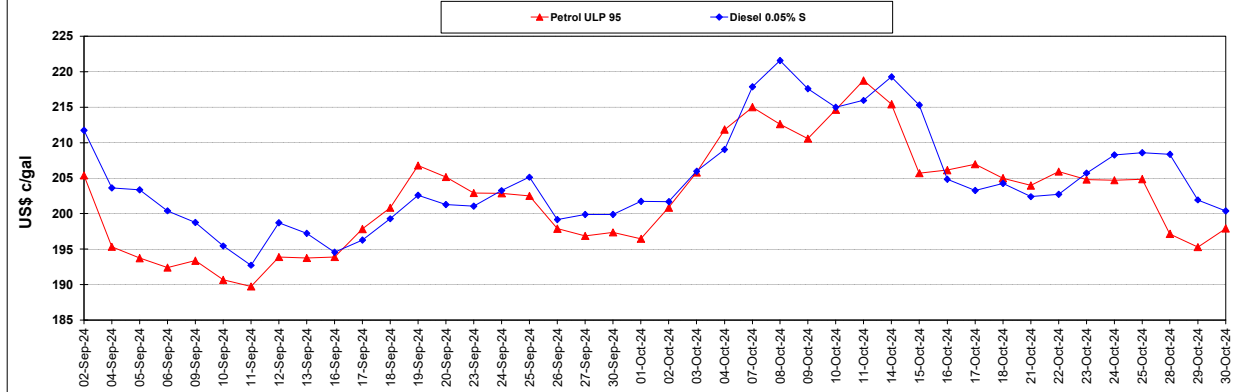
	PETROL 95	PETROL 93	DIESEL 0.05%	DIESEL 0.005%	ILL. PAR.
- MOVEMENT IN INTERNATIONAL PRODUCT PRICES	(34.620)	(22.495)	(30.419)	(28.627)	(29.625)
- MOVEMENT IN EXCHANGE RATE	8.857	8.472	9.014	9.093	9.008
AVERAGE UNIT OVER/(UNDER) RECOVERY 27/09/2024 - 30/10/2024	(25.763)	(14.023)	(21.405)	(19.534)	(20.617)

### R/\$ EXCHANGE RATE - (R/\$17.54880 - 30/10/2024)

#### EXCHANGE RATE USED IN BASIC FUEL PRICE



#### INTERNATIONAL PRODUCT PRICES OF BASKET USED IN BASIC FUEL PRICE



#### BASIC FUEL PRICE IN SA CENTS PER LITRE

