

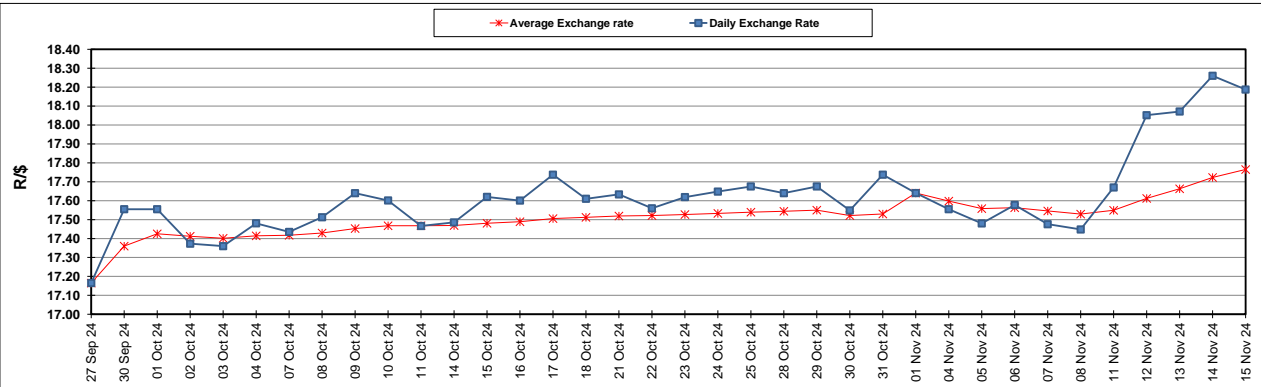
South African Cents per Litre (SA c/l)	PETROL 95 ULP	PETROL 93 ULP & LRP	DIESEL 0.05%	DIESEL 0.005%	ILL. PAR.
GAUTENG PUMP PRICE AS FROM 06/11/2024	2,130.000	2,098.000	-	-	-
WHOLESALE PRICE AS FROM 06/11/2024	-	-	1,866.170	1,876.570	1,286.938
SINGLE NATIONAL MAXIMUM RETAIL PRICE AS FROM 06/11/2024	-	-	-	-	1,636.000
BASIC FUEL PRICE - 15/11/2024	1,010.361	964.648	1,070.660	1,080.314	1,072.505
PRESS RELEASE CONTRIBUTION TO BFP 06/11/2024 - 15/11/2024	1,014.070	982.070	1,032.630	1,043.030	1,033.128
UNIT OVER/(UNDER) RECOVERY - 15/11/2024	3.709	17.422	(38.030)	(37.284)	(39.377)
AVERAGE BASIC FUEL PRICE 01/11/2024 - 15/11/2024	1,002.780	959.570	1,066.390	1,075.373	1,066.506
AVERAGE UNIT OVER/(UNDER) RECOVERY 01/11/2024 - 15/11/2024	4.472	15.682	(39.487)	(37.798)	(39.106)

### ANALYSIS MOVEMENT OF AVERAGE OVER/(UNDER) RECOVERY

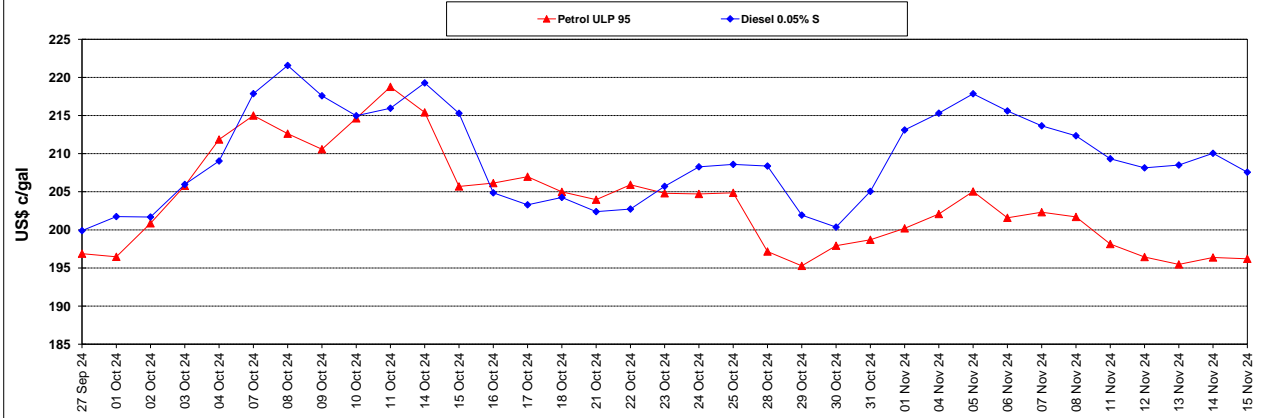
	PETROL 95	PETROL 93	DIESEL 0.05%	DIESEL 0.005%	ILL. PAR.
- MOVEMENT IN INTERNATIONAL PRODUCT PRICES	17.743	28.381	(25.375)	(23.567)	(24.991)
- MOVEMENT IN EXCHANGE RATE	(13.271)	(12.699)	(14.112)	(14.231)	(14.114)
AVERAGE UNIT OVER/(UNDER) RECOVERY 01/11/2024 - 15/11/2024	4.472	15.682	(39.487)	(37.798)	(39.106)

R/\$ EXCHANGE RATE - (R/\$18.1875 - 15/11/2024)

### EXCHANGE RATE USED IN BASIC FUEL PRICE



### INTERNATIONAL PRODUCT PRICES OF BASKET USED IN BASIC FUEL PRICE



### BASIC FUEL PRICE IN SA CENTS PER LITRE

